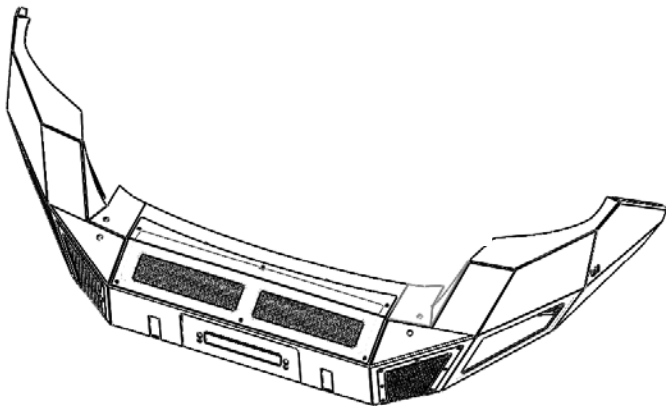


GORRHINO®

INSTALLATION INSTRUCTIONS

PART NO.

● 24388T



PRODUCT DESCRIPTION:

● FRONT BUMPER
REPLACEMENT

APPLICATION:

● TOYOTA TACOMA

PRODUCT SAFETY & LEGAL DISCLAIMER

- **IMPORTANT READ ALL INSTRUCTIONS CAREFULLY BEFORE INSTALLING, FAILURE TO DO SO MAY CAUSE PERSONAL INJURY OR DAMAGE TO PRODUCT AND/OR PROPERTY.**
- **Review the product package and contents prior to beginning the installation.** Take care when opening the packaging and removing items. If a return is needed you will want to return the product in its original packaging if possible.
- This instruction guide is provided as a GENERAL installation guide, some vehicles vary dimensionally and may require additional steps.
- Test fit the product on the vehicle prior to any third party modifications and or finishing. The manufacturer and/or distributors do not accept responsibility for third party charges, labor and or third part replacement modifications. Some modifications may void the factory warranty.
- Exercise due-diligence when installing this product. The manufacturer and distributors of this product do not accept any responsibility for vehicle damage or personal injury resulting from the installation of this product. Careless installation and operation can result in serious injury or equipment damage.
- This product is for general off-road use. All liability for installation and use rests with the owner/operator.
- **INSTALLER:** Once installation is complete, please return this guide along with other documentation included in this product back to the consumer for future reference. The manufacturer/distributors of this product do not guarantee this particular version will be available at a later date.

© 2015 Go Rhino Products. All rights reserved.



INSTALLATION INSTRUCTIONS

INJURY HAZARD

Please complete a shop and tool inspection prior to beginning the installation.

- Always make sure you have a clean, dry and well lit work area.
- Always remove jewelry, loose fitting clothing and wear protective gloves and eye protection.
- Always use extreme caution when jacking or raising a vehicle for work. Set the emergency brake and use tire/wheel blocks and jack stands. Refer to the vehicle manufacturer hand book. Utilize the vehicle manufacturers designated lifting points.
- Always use appropriate and adequate care in lifting parts during disassembly and installation. Seek help in lifting heavy or large items into place. Utilize jacks and or lifting devices when available.
- Always insure products are secure during disassembly and installation.
- Always wear eye protection and take steps to protect any exposed skin during the installations. Drilling, cutting and grinding plastic and metal may create flying particles that can cause injury.
- Always use extreme caution when drilling, cutting and or grinding on a vehicle. Thoroughly inspect the area to be drilled, on both sides of material, prior to modification and relocate any objects that may become damaged.
- Always assemble and tighten all fasteners per the installation instructions.
- Always route electrical cables carefully. Avoid moving parts, parts that may become hot and rough or sharp edges.
- Always insulate and protect all exposed wiring and electrical connections.

MAINTENANCE AND CARE

- Always perform regular inspections and maintenance on mounts and related fasteners.
- Periodically check and tighten all fasteners.
- Stripped, fractured, or bent fasteners must be replaced.
- After washing the vehicle make sure to fully dry all surfaces.
- In areas with cold temperatures make sure to wash the product often to remove harmful materials used on road ways.
- Never use abrasive cleaners or polish compounds. Clean with a gentle soap and water. If you use wax use a non-abrasive automotive wax such as pure carnauba wax.

WARNING

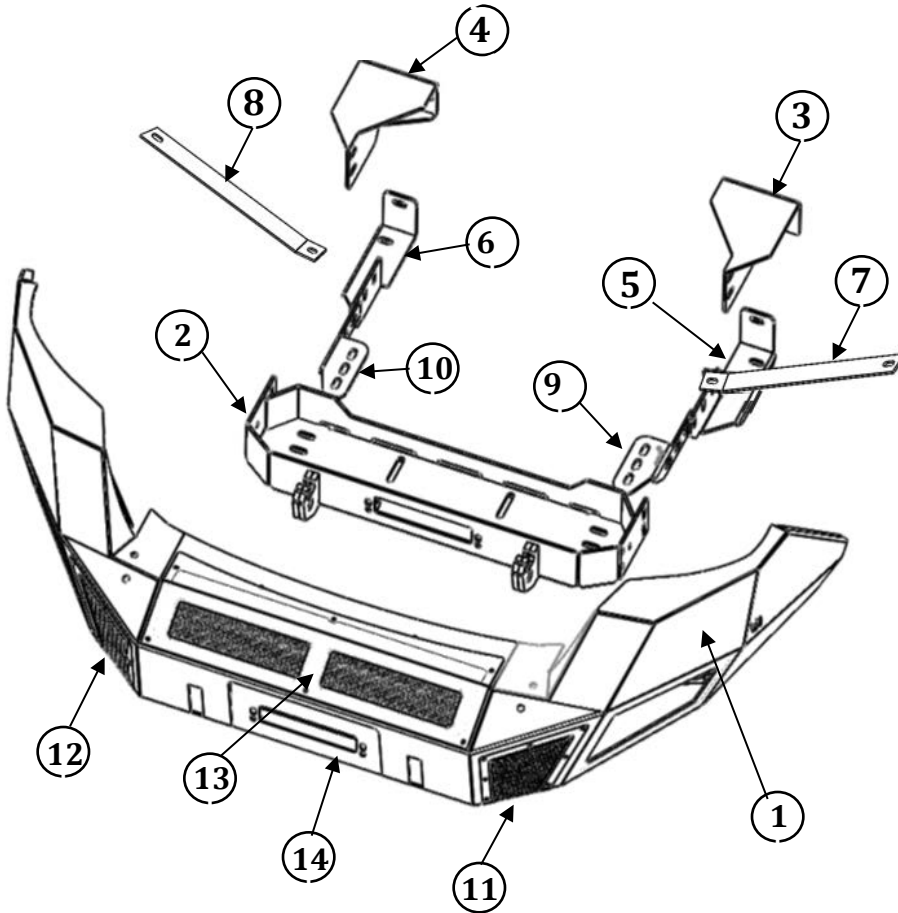
Some products have been designed to work together with factory rear sensor systems, factory forward facing sensor systems and factory air bags.

- Installation of some of these products may alter the factory sensor system performance.
- Factory sensors may read shackles or hooks protruding from the fairlead and or tow hooks.
- All sensor testing is completed by Go Rhino Products and or third party testing labs on modified vehicles.
- Sensor sensitivity, factory sensor housing, orientation, and operating conditions are all variables that will influence functionality of the sensors.
- Installation of some product may effect the factory air bag systems.
- Some products allow the use of third party products such as winches, shackles, hooks, etc. Follow the respective manufacturers operating instructions for use with our products.
- Make sure to fully understand the product, it's intended use and operation prior to use.
- Above all... be safe!

GO RHINO®

INSTALLATION INSTRUCTIONS

PARTS INCLUDED IN THIS LIST:



1	1	FRONT BUMPER REPLACEMENT	
2	1	MOUNTING PLATE / WINCH TRAY	
3	1	DRIVER MAIN BRACKET	
4	1	PASSENGER MAIN BRACKET	
5	1	DRIVER AUXILIAR LOWER BRACKET	
6	1	PASSENGER AUXILIAR LOWER BRACKET	
7	1	DRIVER SIDE AUXILIARY BRACKET	
8	1	PASSENGER SIDE AUXILIARY BRACKET	
9	1	DRIVER WINCH TRAY BRACKET	
10	1	PASSANGER WINCH TRAY BRACKET	
11	1	DRIVER SIDE VENT COVER	
12	1	PASSENGER SIDE VENT COVER	
13	1	WINCH COVER	
14	1	LICENSE PLATE BRACKET	
15	2	LIGHT POD PLATE	
16	4	HOLE PLUG	
17	20	½ X 1 ½" HEX BOLT	64 FT/LBS.
18	6	½ X 1 ½" CARRIAGE BOLT	64 FT/LBS.
20	2	½ X 4 ½" HEX BOLT	64 FT/LBS.
21	42	½" FLAT WASHER	
22	26	½" LOCK WASHER	
23	22	½" HEX NUT	
24	2	3/8" x 1 ¼" HEX BOLT	35 FT/LBS.
25	2	3/8" HEX NUT	
26	4	3/8" FLAT WASHER	
27	2	3/8" LOCK WASHER	
28	2	SPACER WASHER	
29	38	¼ x ¾" BUTTON HEAD BOLT	15 FT/LBS.
30	2	3/4" K lath screw 3 FT/LBS.	

Go Rhino recommends you, the installer, read this installation instruction manual from front to back before installing the product. You may also [click here](#) to view an installation video or visit <http://www.gorhino.com/Installation-Videos>.

TOOLS NEEDED FOR INSTALLATION:

- 3/4" Socket & Wrench
- 10mm Socket & Wrench
- 14mm Socket & Wrench
- 9/16" Socket & Wrench
- Slotted Blade Screwdriver
- Ratchet & Extension

ESTIMATED TIME FOR INSTALLATION:

90 Minutes

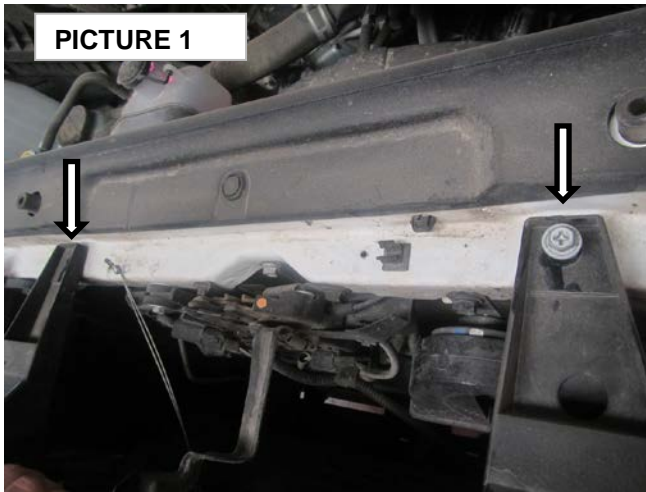
If you need installation service for your new product, call the authorized distributor from whom you purchased the product or an authorized installation service company which can be found by calling toll free 1-888-427-4466

GO RHINO®

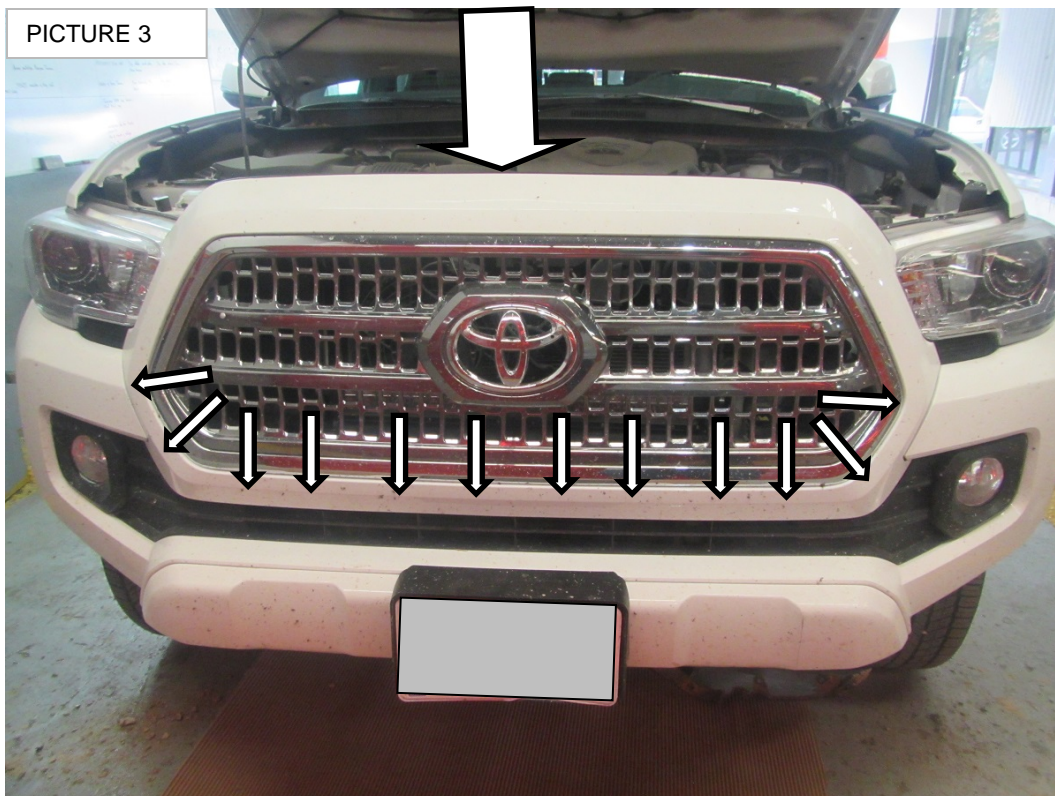
INSTALLATION INSTRUCTIONS

Step-1 Begin the installation on the top of the vehicle, remove two grill screws (PICTURE 1).

Step-2 Remove two clip securing in back to the front grille. (PICTURE 2).



Step-3 Pull up & out the grill holders carefully to the front, and then insert one hand between grill & frame, then remove grill holders (10 clips), then pull out the grill.(PICTURE 3)



GO RHINO®

INSTALLATION INSTRUCTIONS

Step-4 In front half of lower cover, remove the screws from driver & passenger sides as show in pictures 4, 5, 6 & 7.



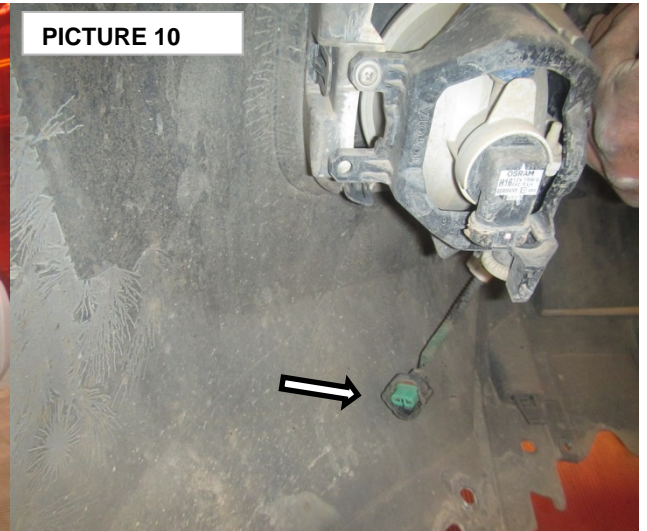
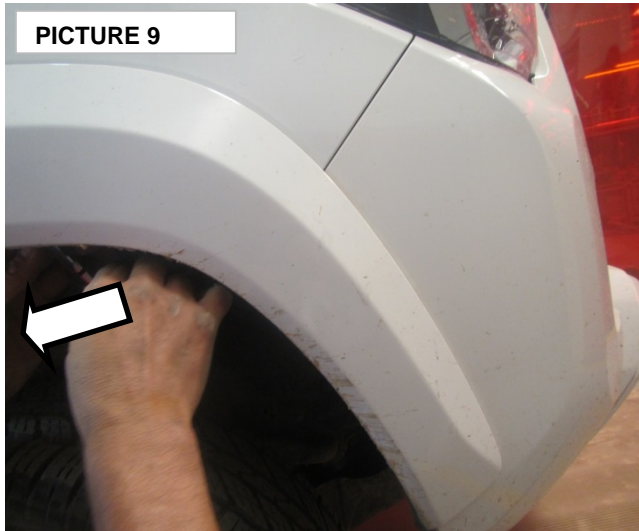
Step-5 Remove the down lower cover screw & all bottom deflector screws. (PICTURE 8)



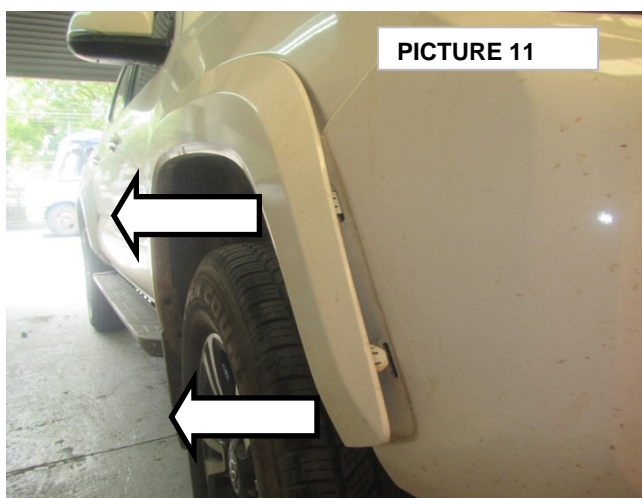
GO RHINO®

INSTALLATION INSTRUCTIONS

Step-6 Remove the lower covers from the passenger and driver sides. (PICTURE 10) If equipped with front park assist and/or fog lamps, disconnect the sensor and/or lamps wiring pig tail from the vehicle wiring harness. (PICTURE 10)



Step-7 Release enough of the plastic clips holding your fender flare on to be able to pull it back and out of your way. You may remove this flare completely if you desire, but it is not necessary. (PICTURES 11 & 12)



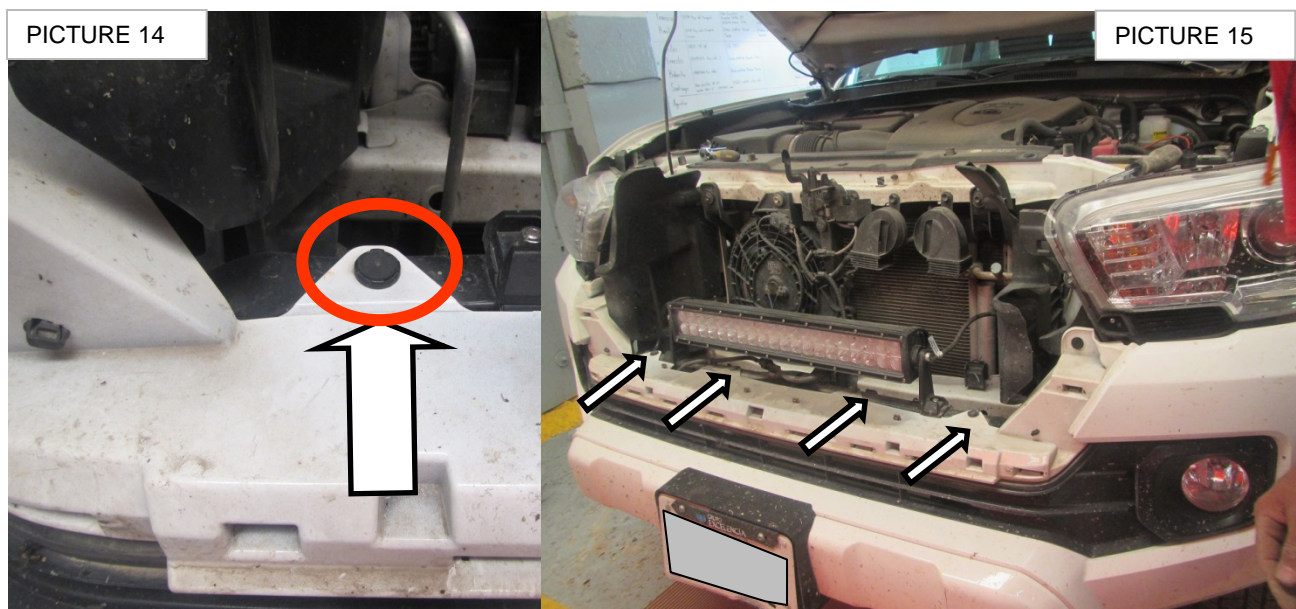
GO RHINO®

INSTALLATION INSTRUCTIONS

Step-8 Remove four front bumper lower screw. (PICTURES 13 & 14)



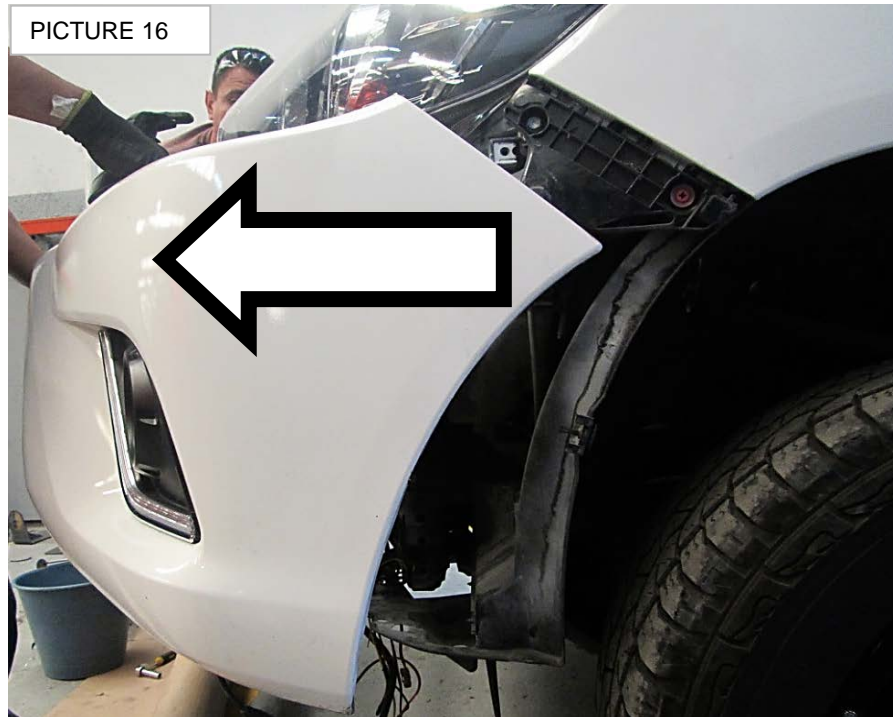
Step-9 Remove four securing clip from bumper as indicate. (PICTURES 14 & 15)



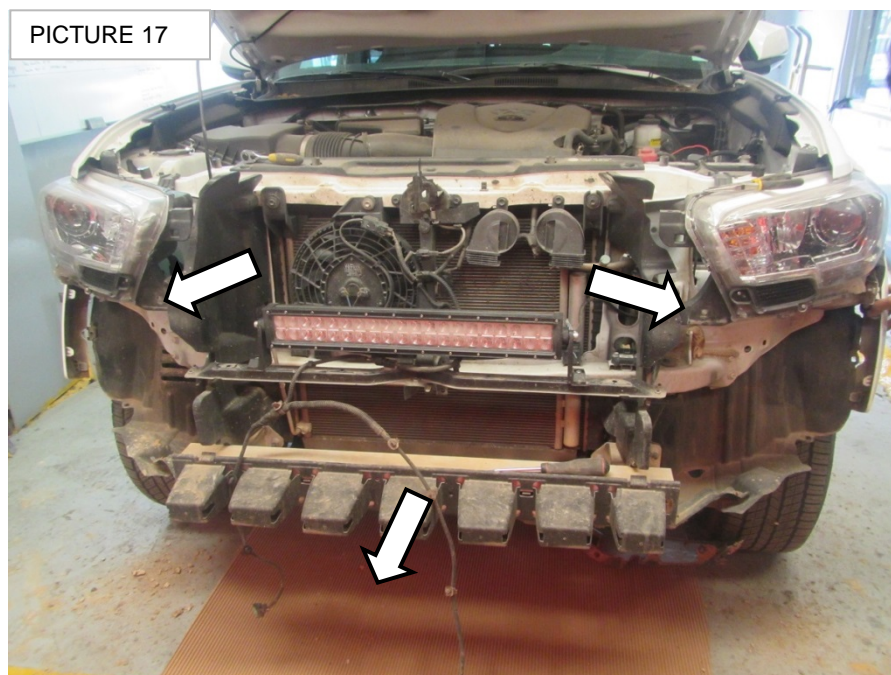
GO RHINO®

INSTALLATION INSTRUCTIONS

Step-9 With assistance remove the bumper from the vehicle as indicate. (PICTURES 16)



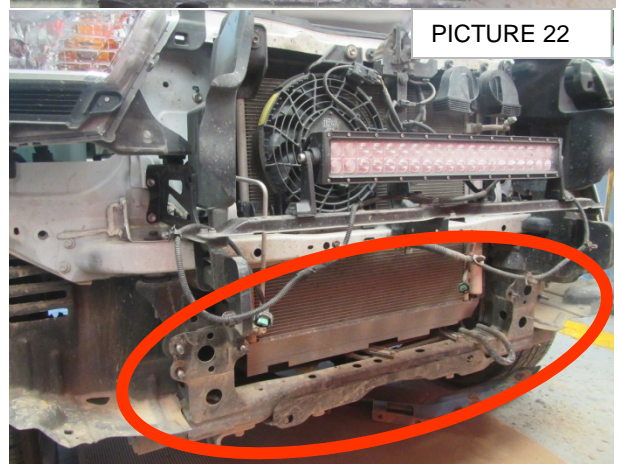
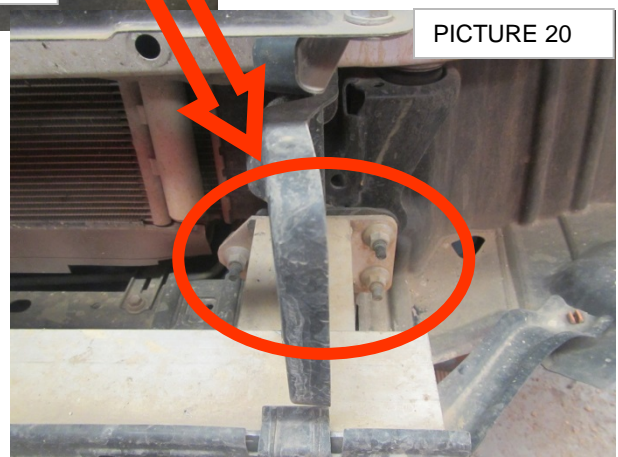
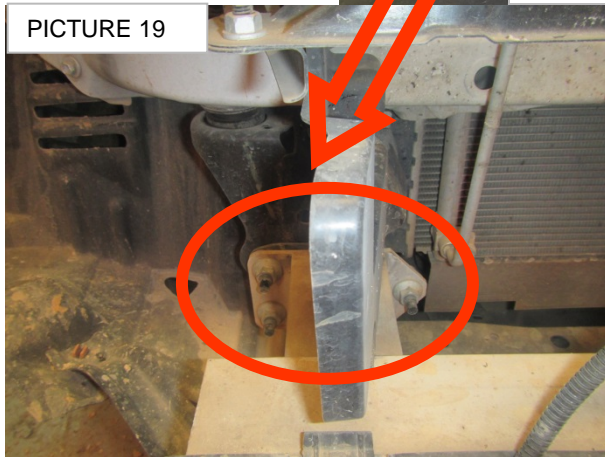
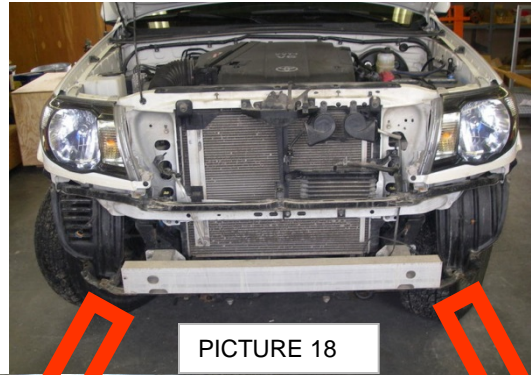
Step-10 Pull out the sides & lower plastic cover toward out to the vehicle. This parts don't used again. (PICTURES 17)



GO RHINO®

INSTALLATION INSTRUCTIONS

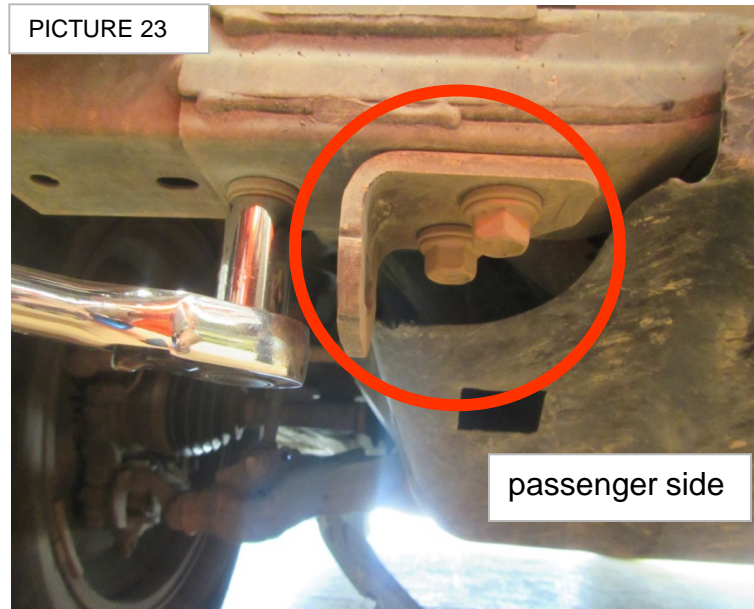
Step-11 Remove the six nuts of aluminium Bumper Reinforcement, and pull out the Bumper Reinforcement (PICTURES 18, 19, 20, 21 & 22)



GO RHINO®

INSTALLATION INSTRUCTIONS

Step-12 Remove the main frame extension of driver & passenger side. In passenger side remove pull tow hook. (PICTURE 23)



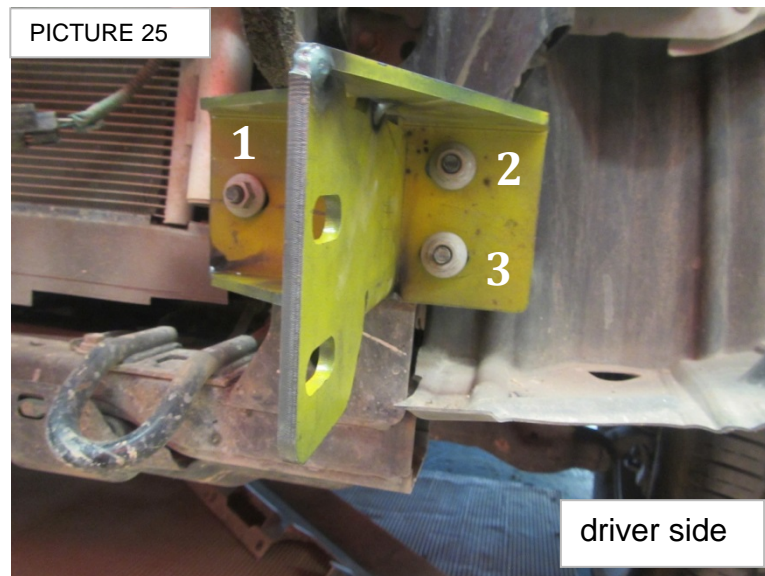
Step-13 Remove screws of driver & passenger side front bumper holder . (PICTURE 24)



GORRHINO®

INSTALLATION INSTRUCTIONS

Step-14 Install main brackets set as show, using the six nuts of aluminium Bumper Reinforcement
(PICTURE 25)



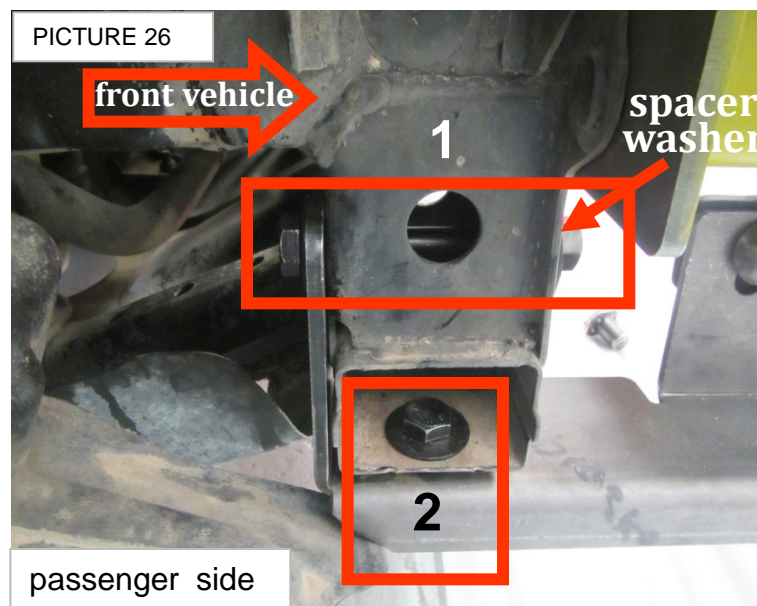
Step-15 Install auxiliar lower bracket set as:

1.- Use 1/2 X 4 1/2" hex head bolt (2), 1/2" flat washer (2), spacer washer (2), lock washer (2) & 1/2" hex nut (2). Note: **The spacer washer is installed in front side.**

2.- Use 1/2 X 1 1/2" hex head bolt (2), 1/2" flat washer (4), lock washer (2) & 1/2" hex nut (2).

Note: **Not tight the nuts & bolts.**

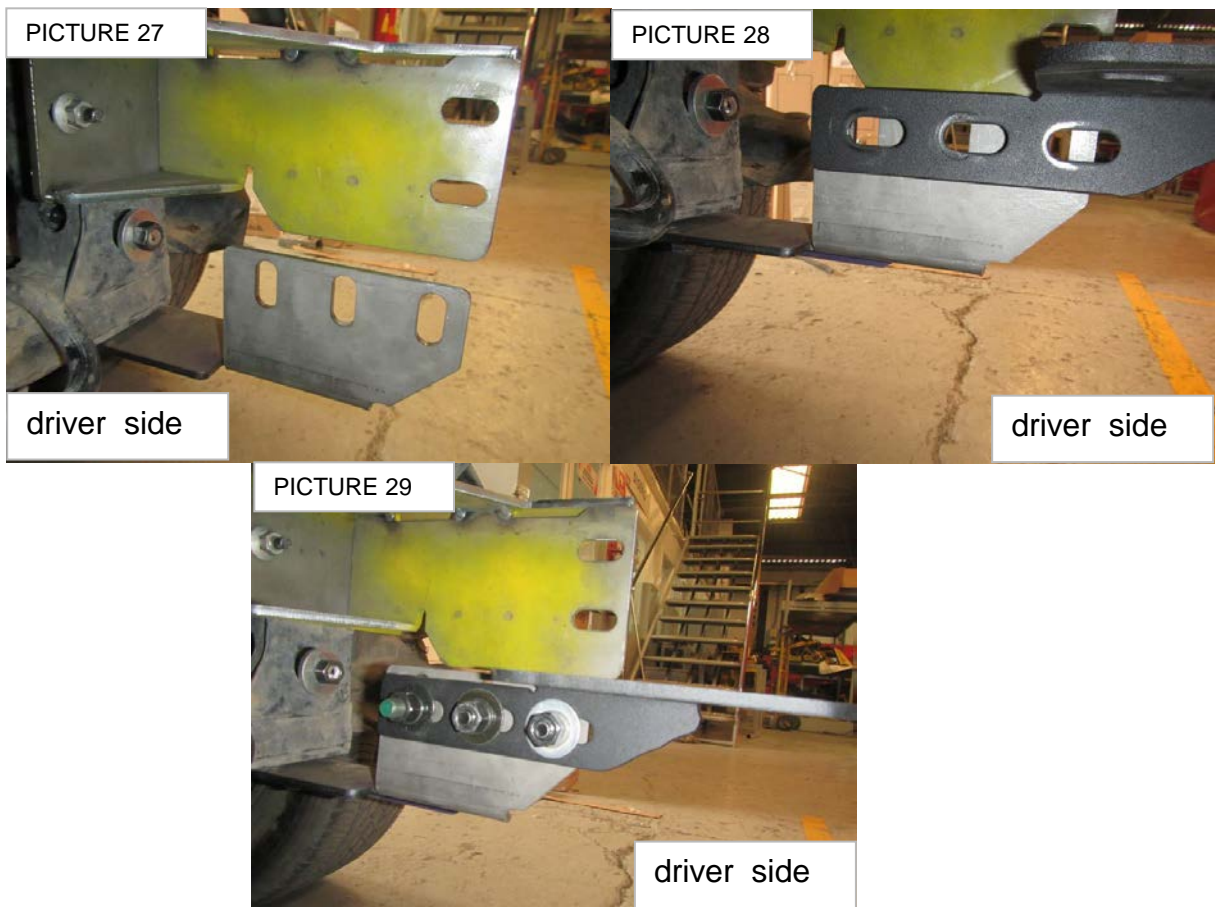
(PICTURE 26)



GO RHINO®

INSTALLATION INSTRUCTIONS

Step-16 On auxiliar lower bracket , Install winch tray brackets set as show , use 1/2" x 1 1/2" hex head bolt (6), flat washer (12) & 1/2" hex nut (6). **not tight the nuts & bolts.**
(PICTURE 27, 28 & 29 - repeat in passenger side)



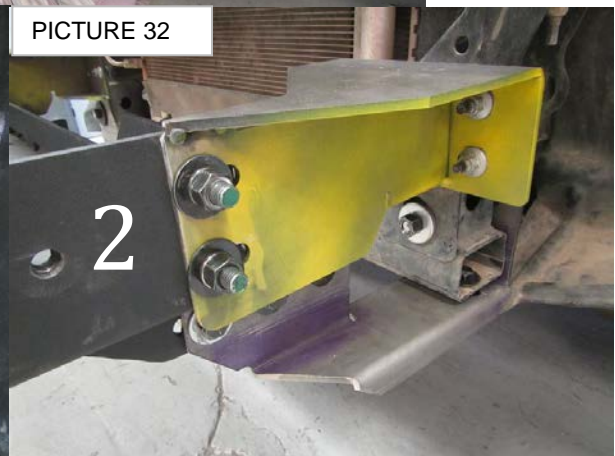
GO RHINO®

INSTALLATION INSTRUCTIONS

Step-17 Position the mounting plate / Winch tray on top of winch tray brackets:

- 1.- Use 1/2" x 1 1/2" carriage bolt, (6), flat washer (6), lock washers (6) & 1/2" hex nut (6).
- 2.- Use 1/2" x 1 1/2" hex head bolt (4), flat washer (8), lock washers (4) & 1/2" hex nut (4).

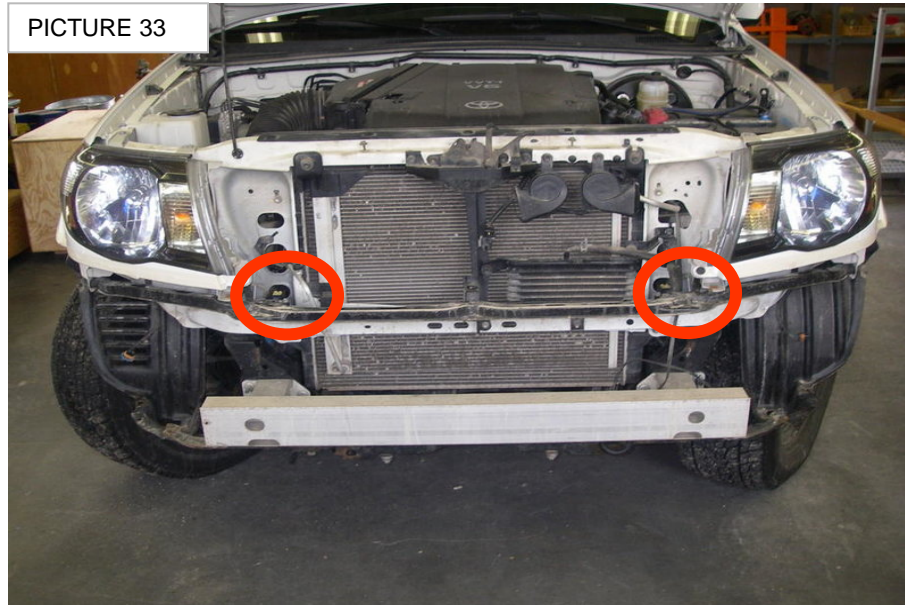
Note: **not tight the nuts & bolts.** (PICTURE 30, 31 & 32)



GO RHINO®

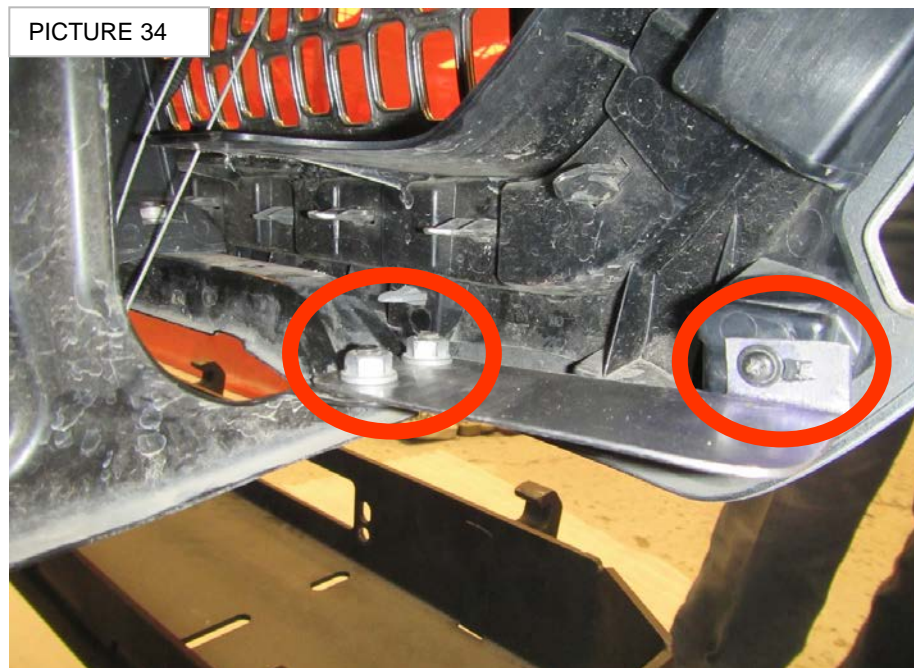
INSTALLATION INSTRUCTIONS

Step-18 Before reinstall the front grill, remove 4 nuts (10mm), 2 in each side of front frame. (PICTURE 33)



Step-19 Remove 2 k lath screws on lower back of front grill, put the bracket grill and install the k lath screws from hardware kit (**don't tight**), re instal the front grill, re install the 4 (10mm)nut. (PICTURE 34)

Note: **tight the 10mm nuts at 10 lb-ft; k lath screw at 3 lb-ft.**



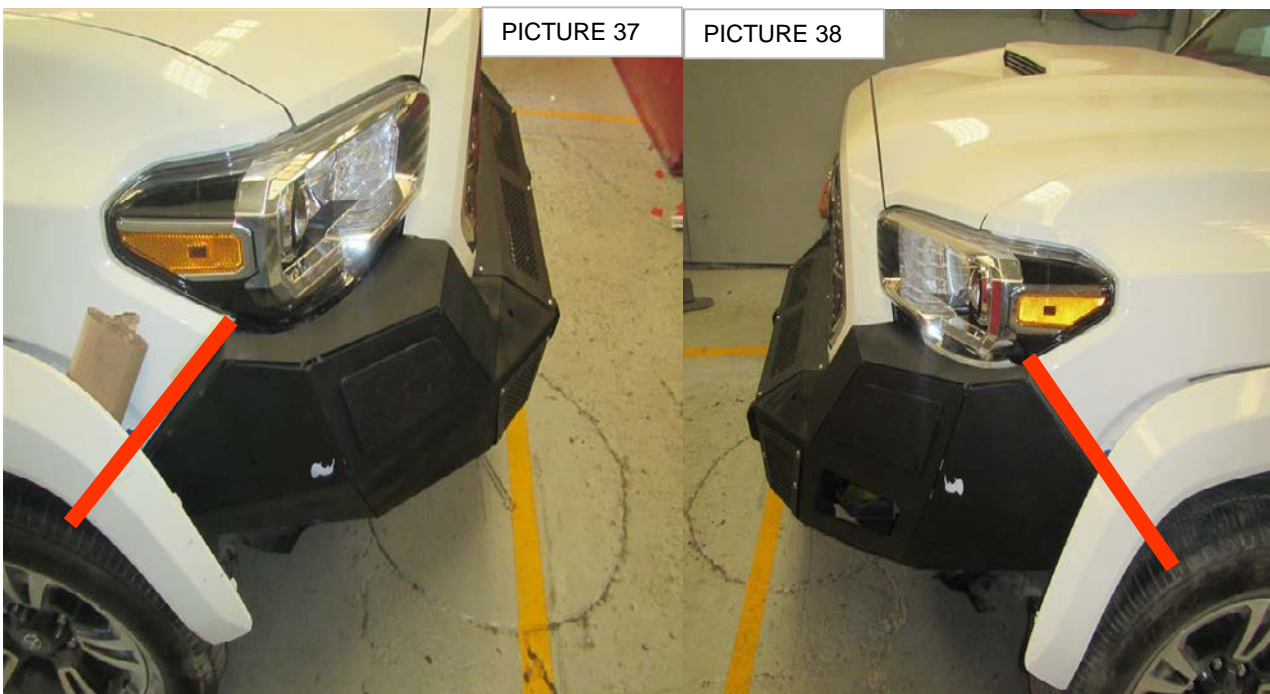
GO RHINO®

INSTALLATION INSTRUCTIONS

Step-20 Cut thru the lower covers approximate 3" from the upper end (PICTURE 35 & 36). Reattach the rest of the lower cover in they original position .



Step-21 Follow the shape of dashboard, cut the side fender. (PICTURE 37 & 38). Reinstall the cut fenders on position with the clips.



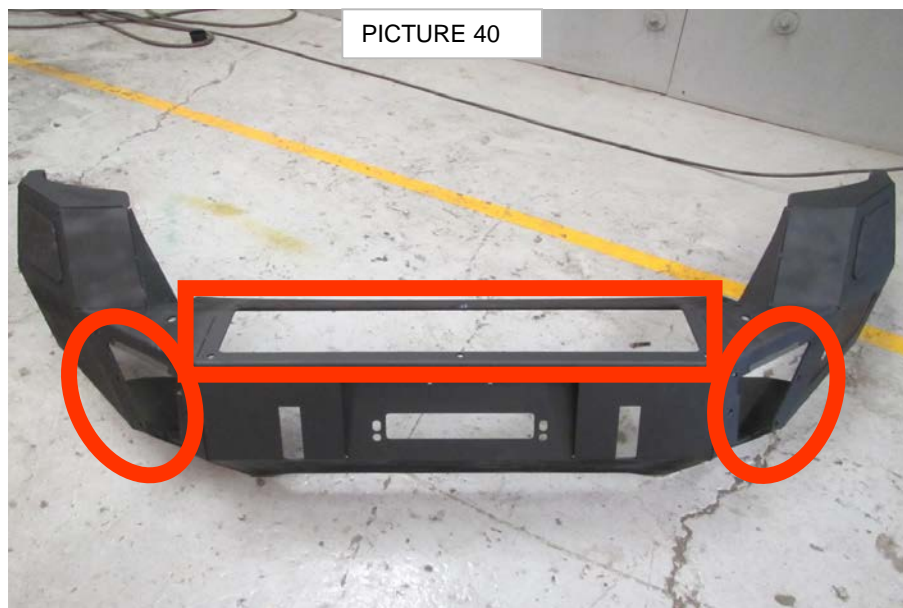
GO RHINO®

INSTALLATION INSTRUCTIONS

Step-22 Remove 14mm Body support nut (2). (PICTURE 39)



Step-23 Remove the 1/4" button head allen screw of the central and side mesh covers. Be careful with plastic flat washers. (PICTURE 40)



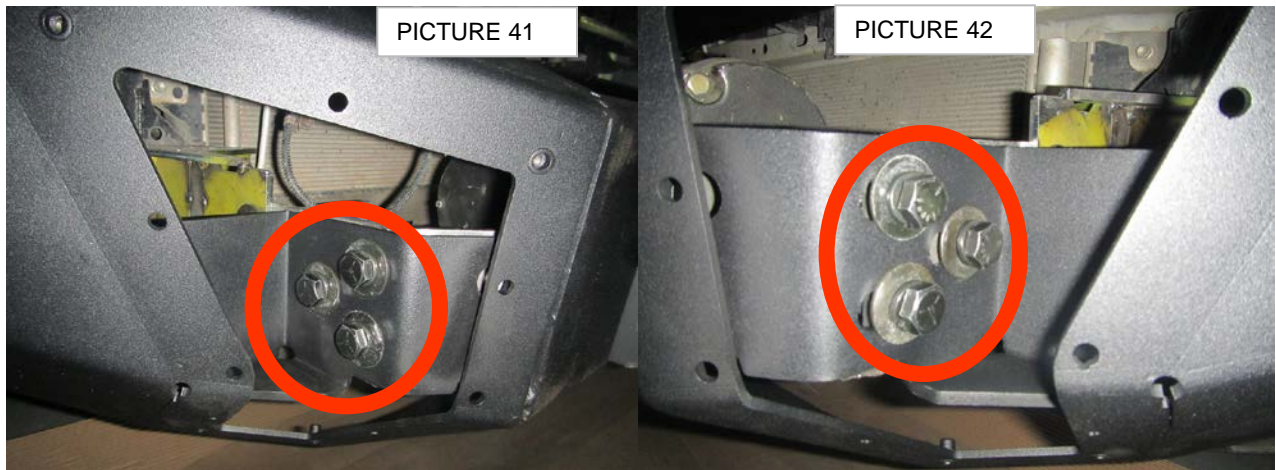
GO RHINO®

INSTALLATION INSTRUCTIONS

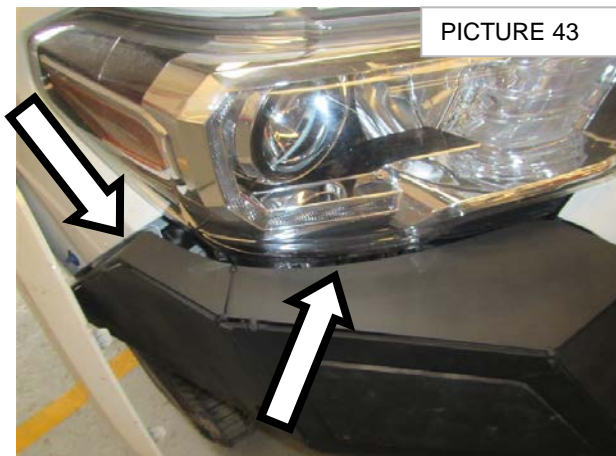
Step-24 With assistance, aligned the bumper main brackets with the winch tray, and use:

1.- Use 1/2" x 1 1/2" hex bolt, (6), flat washer (6), & lock washers (6).

Note: **not tight the nuts & bolts.** (PICTURE 41 & 42)



Step-25 Line up the bumper with the shape of dashboard & headlamps (**Be carefully with headlamps**) and (PICTURE 43 & 44)



GO RHINO®

INSTALLATION INSTRUCTIONS

Step-26 Install the side auxiliary bracket from bumper to body support screw. (PICTURE 45)

Use 1/2" x 1 1/2" hex head bolt (4), flat washer (8), lock washers (4) & 1/2" hex nut (4) on bumper side, and 3/8" flat washer & 3/8" hex nut(2) removed on step22 for chassis side.

Tight the main brackets 3/8" hex nuts at 40 lb-ft

Tight all the 1/2" hex head bolts & 1/2"nuts at **64 lb-ft.**



Step-27 Install the winch cover and driver and passenger side front vent covers to the bumper shell using 1/4 x 3/4" button head bolts & plastic flat washers, removed to install bumper. (Step 21)

Tight bolts, at **15 lb-ft.** (PICTURE 46)

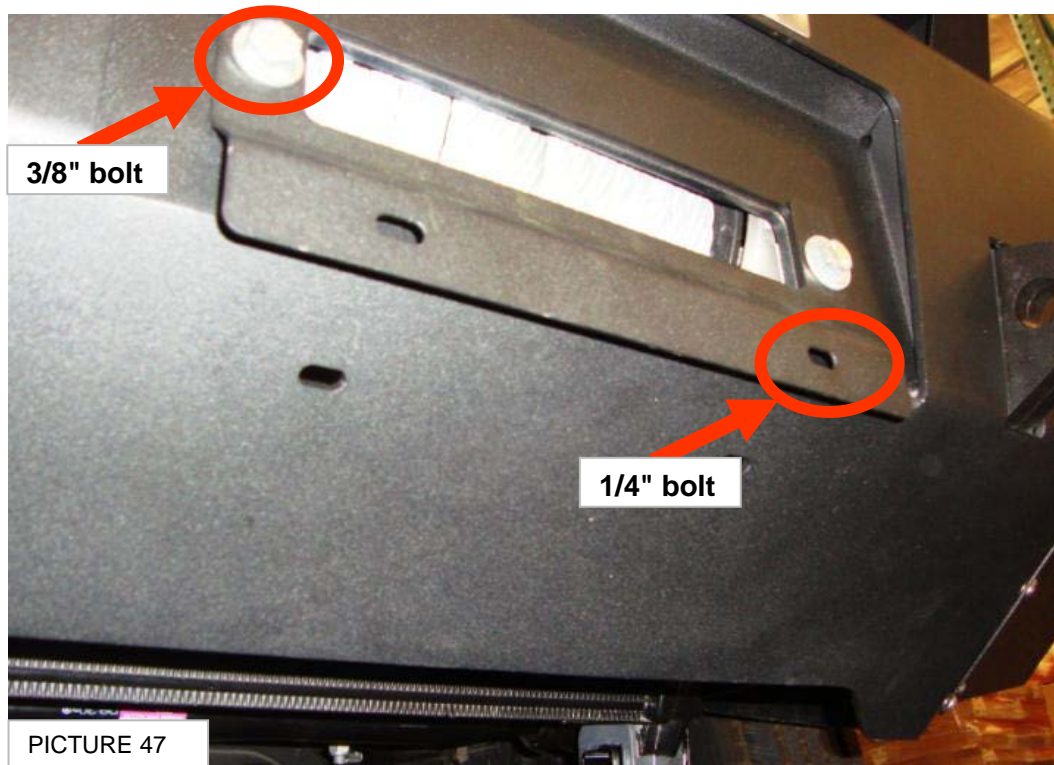


GO RHINO®

INSTALLATION INSTRUCTIONS

Step-28 If installing a winch, install the roller fairlead to the bumper shell at this time. Refer to the winch manufacturer's instructions for installation. If installing an optional light bar, install the light bar to the bumper replacement at this time. Refer to the light bar instructions for installation.

Step-29 If your state law requires a front license plate, attach the license plate bracket to the holes in the face of the bumper shell, using the supplied 3/8" bolt, washer and nuts, and the license plate to the (2) obround holes in the license plate bracket using the supplied 1/4" bolts and nuts. (PICTURE 47).





INSTALLATION INSTRUCTIONS

LIMITED WARRANTY

Go Rhino warrants to Buyer that for a period of five (5) years from the date of shipment of the product(s) ("Warranty Period") for black finishes and chrome finishes, that such products will materially conform to the specifications set forth in Go Rhino's specifications in effect as of the date of shipment(s) and will be free from material defects in material workmanship.

Go Rhino warrants to Buyer that for the life of the product(s) from the date of shipment of the product(s) ("Warranty Period") for polished stainless steel finished products purchased after April 2004, that such products will materially conform to the specifications set forth in Go Rhino's specifications in effect as of the date of shipments and will be free from material defects in material workmanship.

Warranty claims must be accompanied with the original invoice and photos of the product. It is the customer's responsibility to clean regularly and protect finish with regular applications of a nonabrasive polish that is compatible with the product's finish.

This warranty covers the cost of the product only and does not include the cost of removal, installation, third party modifications or shipping of the product. In no event shall Go Rhino be liable to buyer or any third party for any damage or harm caused by the product or use thereof, regardless of weather such damages were foreseeable and whether or not Go Rhino has been advised of the possibility of such damages, not withstanding the failure of any agreed or other remedy of its essential purpose. This warranty is void if the product shows signs of alteration, misuse, mishandling, improper care, neglect, improper application and/or damage due to improper installation.

With respect to any such product(s) during the limited warranty period, Go Rhino shall, in its sole discretion, either: (i) provide a one-time repair or replacement of such products (or the defective part) or (ii) credit or refund the price of such products at the pro rata contract rate provided that, if Go Rhino so requests, Buyer shall, at Go Rhino's expense, return such product(s) to Go Rhino. The remedies shall be the Buyer's sole and exclusive remedy and Go Rhino's entire liability for any breach of the limited warrant(ies).

Go Rhino disclaims all other warranties except to the extent that any such warranty cannot be validly disclaimed under applicable law.

Finish Limited Warranty:

Limited lifetime on stainless steel products (after April 2004)

5 year warranty on black powder coat products

5 year warranty on chrome products

This warranty does not cover exposed welds

Finish warranty covers peeling, flaking, or cracking. Washing all finishes regularly with car wash soap and rinsing well with water is the best method for maintaining the finish on your products. You must also protect the finish with nonabrasive automotive wax on a regular basis. The use of any compound which contains abrasives becomes a self-defeating exercise as the compound scratches the finish and opens it to corrosion. The use of harsh chemicals used to remove bugs and tar may also cause the finish to fail and should be avoided.

If you are unsatisfied with your purchase please contact the establishment you purchased the product from.

If you need to place a warranty claim or need assistance, the Go Rhino customer service team will answer any questions you may have. Please contact the Go Rhino customer service team at 1-888-427-4466 during normal business hours Monday thru Friday 7 am to 5 pm PST. You may also email warranty@gorhino.com. In order to better serve you please provide a copy of the original invoice / receipt, a photo of the issue you are experiencing and a photo of the vehicle the product is installed on.

All warranty returns must have an approved RGA number. The RGA number must be clearly marked on the exterior of the return package. All approved warranty returns must be shipped to Go Rhino Products, 1002 Carriers Drive, Laredo, Texas 78045.

PRODUCT REGISTRATION

Please remember to register your new purchase. You may register your product at www.gorhino.com. Registering your product may help speed any future warranty or customer service inquiries.

Thank you again for purchasing from Go Rhino Products

Please take a few minutes to view additional products for your vehicle and more at GORHINO.com
These installation instructions are available on the Go Rhino web site along with installation videos for many of our products.

www.gorhino.com

www.bigcountryauto.com

www.gorhinopd.com