

## INSTALLATION INSTRUCTIONS

Dakar Sport 52188(1-4) / Dakar 52188(1BB-4BB) / Rhino Charger BB52188(1B-4PS)

### TOYOTA TACOMA 05-06

**Parts List:****QTY**

1. Dakar Sport
1. Set main brackets

**(1) Hardware kit including:**

- (2) 1/2" x 4" Hex head bolt
- (2) 1/2" x 2" Hex head bolt
- (2) 1/2" x 1 1/2" Hex head bolt
- (10) 1/2" Flat washer
- (4) 1/2" Lock washer

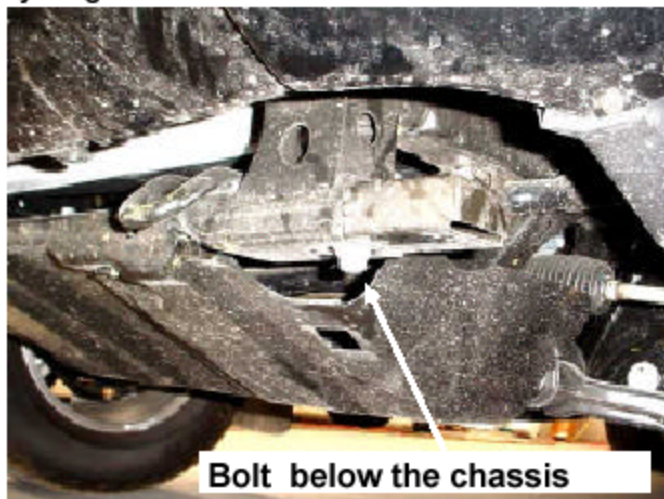
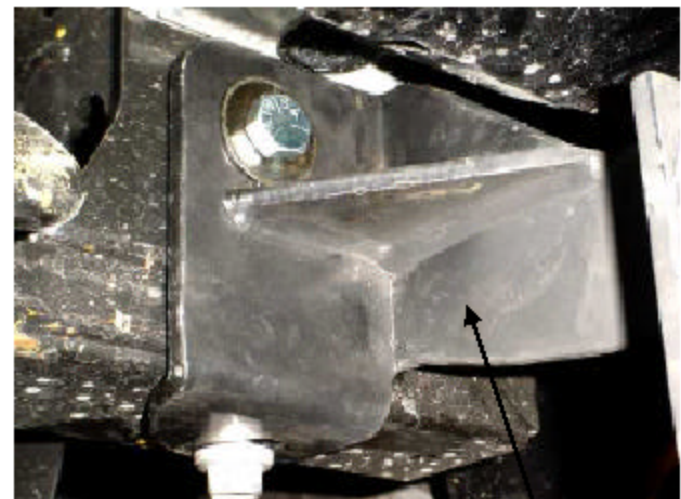
**Tools required:**

- 17 MM SOCKET.    3/4" WRENCH
- 3/4" SOCKET       RATCHET

**Instructions:****Aproximated installation time: 20 min.**

1. Read and understand instructions completely before beginning installation.
2. Find the bolts below the chassis and remove them. See image 1.
3. Place the bracket on chassis and hold it with the removed bolt. Introduce the 1/2" x 4" bolt on the upper slot of the bracket through the chassis, hand tighten with its nut and flat washers. See image 2.
4. Once the brackets are install, place the DAKAR SPORT on the brackets with 1/2" x 2" bolts. See image 3. Align the DAKAR SPORT and tighten all the hardware.

NOTE: On 4x2 vehicles there aren't M12 bolts on crossed component base. If you want, you can drill 9/16" on the crossed component base to screw the bracket and use 1/2 x 1 1/2" bolts with its flat washers and lock washers.

**Assembly Diagram:****IMAGE 1****IMAGE 2****INSTALLED BRACKET****Cleaning and care instructions:**

Diseño:

Calidad:

Protect the finish with a non-abrasive automotive wax, (e.g. Pure Carnauba) on a regular basis. The use of any soap, polish, or wax that contains an abrasive is detrimental to the finish, as the compounds scratch the finish and cause corrosion.

Revised xx/xxx/xxxx

G:\Usuarios\Diseno\Instructivos PDF\xxx\xxx.Pdf

## INSTALLATION INSTRUCTIONS

Dakar Sport 52188(1-4) / Dakar 52188(1BB-4BB) / Rhino Charger BB52188(1B-4PS)

TOYOTA TACOMA 05-06

IMAGE 3



INSTALLED  
DAKAR  
SPORT



### Cleaning and care instructions:

Diseño:

Calidad:

Protect the finish with a non-abrasive automotive wax, (e.g. Pure Carnauba) on a regular basis. The use of any soap, polish, or wax that contains an abrasive is detrimental to the finish, as the compounds scratch the finish and cause corrosion.

Revised xx/xxx/xxxx

G:\Usuarios\Diseño\Instructivos PDF\xxx\xxx.Pdf