



INSTALLATION MANUAL

RED STEEL REAR BUMPER

PRODUCT NUMBER: CS19-RT4050

APPLICATION: 2019+ CHEVROLET/GMC 1500



IMPORTANT SAFETY GUIDE | Your safety and the safety of others is very important.

In order to help you make informed decisions about safety, we have provided the following warnings, safety precautions, installation instructions, and other important information to alert you to potential hazards that could hurt you or others.

Please do a job safety analysis before each task to identify potential hazards for your situation and remove/protect against them. Use own good judgment and take your time.

Check packaged materials immediately upon arrival to ensure that all listed parts are included and undamaged.

Read and understand all warnings, safety precautions, and instructions before installing this product.

SENSORS FIELD OF VIEW MAY BE ALTERED WITH USE OF THE REPLACEMENT BUMPER.

WARNINGS

- Failure to observe the following warnings and instructions provided in this manual could lead to severe injury and/or death.
- For professional installation only. Careless installation and/or operation can result in serious injury, death, and/or equipment damage. All liability for installation and use rests with the user or consumer.
- Fab Fours, Inc. only approves installing this product according to these written instructions with the hardware provided. Failure to install according to these instructions will invalidate the warranty. This includes, but is not limited to, using alternative installation methods, hardware, or materials.
- This product is for off road use only.

SAFETY PRECAUTIONS

- Always remove jewelry and wear eye protection.
- Always use extreme caution when jacking up a vehicle for work. Set emergency brake and use tire blocks. Locate and use the vehicle manufacturers designated lifting points. Use jack stands.
- Always use appropriate and adequate care in lifting components into place.
- Always ensure components will remain secure during installation and operation.
- Always wear safety glasses when installing this kit. A drilling operation will cause flying metal chips. Flying chips can cause serious eye injury.
- Always use extreme caution when drilling a vehicle. Always disconnect power before welding. Thoroughly inspect the area to be drilled (on both sides of material when possible) prior to drilling, and relocate any objects that may be damaged.
- Always use extreme caution when welding a vehicle. Thoroughly inspect the area to be welded (on both sides of material when possible) prior to welding, and relocate any objects that may be a fire hazard. When welding in a cab, make sure the interior surfaces are covered (e.g., welding blanket) and a fire extinguisher is at hand.
- Always use extreme caution when cutting and trimming during fitting.
- Always tighten all nuts and bolts securely per installation instructions.
- Always route electrical cables carefully. Avoid moving parts, components that become hot, and rough or sharp edges.
- Always insulate and protect all exposed wiring and electrical terminals.
- Perform regular inspections and maintenance on mounts and hardware.

TABLE OF CONTENTS

- 2 SAFETY / DISCLAIMER
- 3 TABLE OF CONTENTS
- 4 A MESSAGE FROM THE OWNER
- 5 GETTING STARTED
- 6 PROVIDED MATERIAL
- 7 DISASSEMBLY
- 10 INSTALLATION
- 12 CONTACT

A MESSAGE FROM THE OWNER



Fab Fours' was born out of a passion for customizing vehicles and a love of the outdoors. Our engineering team uses the latest 3D design software to turn new product ideas into reality. In our factory, designs come to life with the combination of cutting edge technology for metal cutting and forming and an American workforce that puts its' heart and pride into every product.

From design and manufacturing, to quality and delivery, Fab Fours' mission is to be the market leader for steel truck and jeep accessories. We make sure a quality product is delivered on time, more than expected, better than expected to our customers.

Enjoy your new Fab Fours product. Welcome to the family!

Greg Higgs

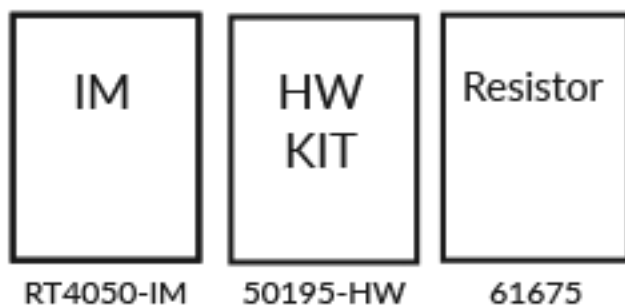
FOUNDER, FAB FOURS

GETTING STARTED

Before you begin the installation process of your new Fab Fours product, we suggest laying out all materials and parts on a pad or protective surface.

Failure to fully account for all components before beginning installation may leave vehicle immobile until part is acquired. Refer to the next pages as an inventory check.

PROVIDED MATERIALS



22150



61672

HARDWARE KIT | 50195-HW

FAB FOURS IDENTIFICATION	COMPONENT DESCRIPTION	QTY
50195-HW	1/4" License Plate Nut Nylon	4
50195-HW	1 3/8"-x Grommet, Plastic	6
50195-HW	Plastic Plug	6
50195-HW	7/16"-14 x 1.25" HHCS Zinc GR8	4
50195-HW	7/16" SAE Flat Washer	8
50195-HW	7/16" SAE Lock Washer	4
50195-HW	7/16"-14 Hex Nut	4
50195-HW	5/16" Flat Fender Washer	4
50195-HW	#8-32 x 3/4" BHCS	4

TOOLS REQUIRED

- 3/8" Socket wrench
- 3/4" Socket wrench
- 15mm Socket wrench
- 18mm Socket wrench
- 22mm Socket wrench
- 3/4" Box end wrench
- 15mm Box end wrench
- 18mm Box end wrench
- 22mm Box end wrench
- Flat head screwdriver
- 5/32" Allen wrench
- Drill
- 1/4" Drill bit
- Phillips head screwdriver

ASSISTANCE

We recommend two people perform the installation as items are heavy and may need to be held in place while installing.

ORGANIZATION

Disassemble the vehicle where you can catalog and store everything. We suggest labeling and bagging all the OEM bolts when removing from the vehicle. Failure to keep track of parts could lead to an inability to properly reinstall components.

NOTE: Save all OEM parts until installation is complete!

1. Remove license plate and OEM license plate lights. Disconnect trailer receptacle. If equipped unplug back-up sensor harness.
2. Using a 13mm wrench, remove the two (2) bolts attaching the stock bumper to the factory trailer hitch located behind the license plate. (Figure 1)
4. Remove the 2(one per side) 13mm bolts attaching the side wings of the bumper to the bumper support rods. (Figure2)

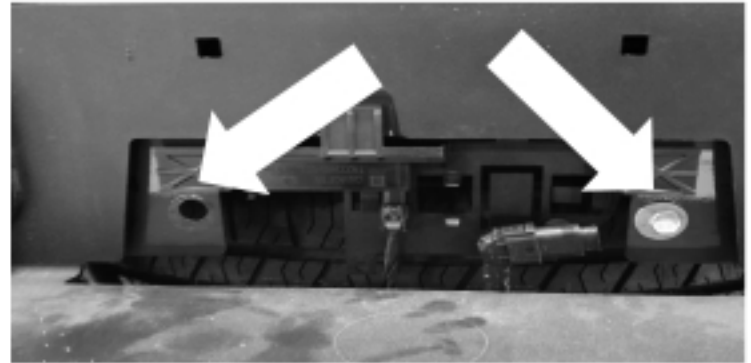


Figure 1



Figure 2

5. Using a 19mm socket, remove the four (4) OEM nuts (two per side) attaching the stock bumper to the chassis. (Figure 3)

6. Remove OEM bumper from the truck

7. Using a 21mm socket, remove the bumper support rods. (Figure 4)

8. Remove the OEM electrical harness from bumper by removing the push pins.

NOTE: Document the location of each sensor housing for reference when reinstalling into your bumper.



Figure 3



Figure 4

9. Remove the sensor from the sensor housing by expanding both sides of the sensor housing and lifting up. (Figure 5-6)

NOTE: Sensors are extremely delicate and must be handled with care! Do not push on face of sensors to remove!



Figure 5

10. Remove the sensor housing from the bumper by depressing the four (4) tabs while pulling outward from the outside of the bumper. (Figure 7-8)

11. Remove spare tire access cover, license plate plastic inserts, tag light housings with clips and trailer plug from the OEM bumper. Set aside for reinstallation.

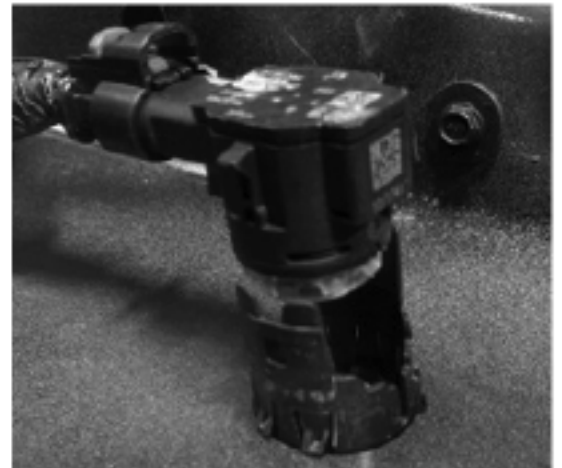


Figure 6

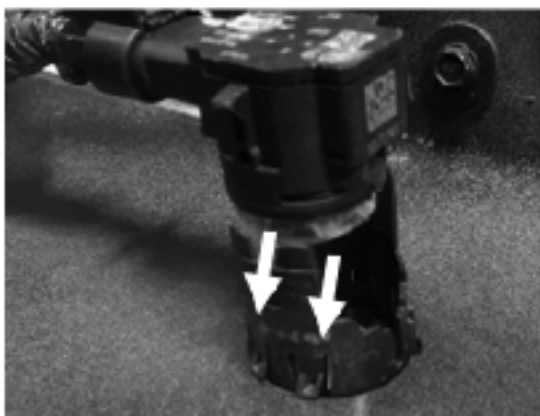


Figure 7



Figure 8

INSTALLATION

12. Using a cut off wheel or similar, remove the bumper supports from the top of the receiver hitch. (Figure 9)

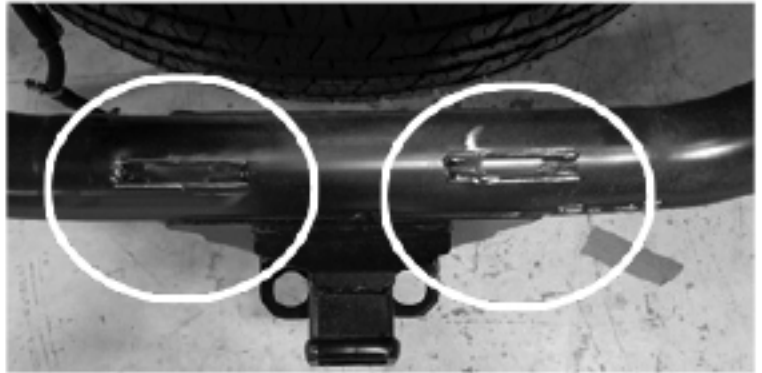


Figure 9

13. **FOR SENSOR BUMPER INSTALLATION ONLY:** Install the sensor housings into the appropriate slots by inserting each housing from the outside of the bumper in.

NOTE: The driver side outer sensor housing will install into the driver side inner sensor location. The passenger side outer sensor housing will install into passenger side inner sensor location. **DO NOT EPOXY AT THIS TIME.**

14. Replace the sensors in the appropriate housings and zip-tie any loose harness to the bumper.

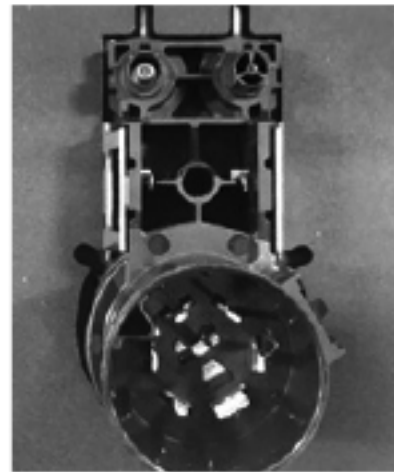


Figure 10

15. Install the OEM tag light housing into the bumper using the OEM hardware.

16. Insert the trailer plug receptacle to the bumper and mark the bolt locations for drilling. (Figure 10)

17. Remove the trailer plug receptacle and using a 7/32" drill bit, drill out the trailer plug receptacle.

17. Install the trailer plug receptacle with the provided #8 hardware.

18. Reinstall license plate with OEM plastic inserts

19. Reinstall the OEM spare tire access

20. Lift your bumper into place and install one (1) 7/16"x1.5 button head bolt, flat washer, lock washer and nut provided in the hardware kit, on each side.

21. Level the bumper and fully tighten all hardware.

NOTE: Lower the tailgate to ensure there is no interference (including GMC step tailgate) with the bumper. If needed, loosen bumper and readjust.

22. FOR SENSOR BUMPER INSTALLATION ONLY: Test the sensors to ensure that the truck does not read the ground or any give off any errors.

23. Once the testing is complete, epoxy the sensors into place.

NOTE: Do not epoxy the sensors, only the housings.