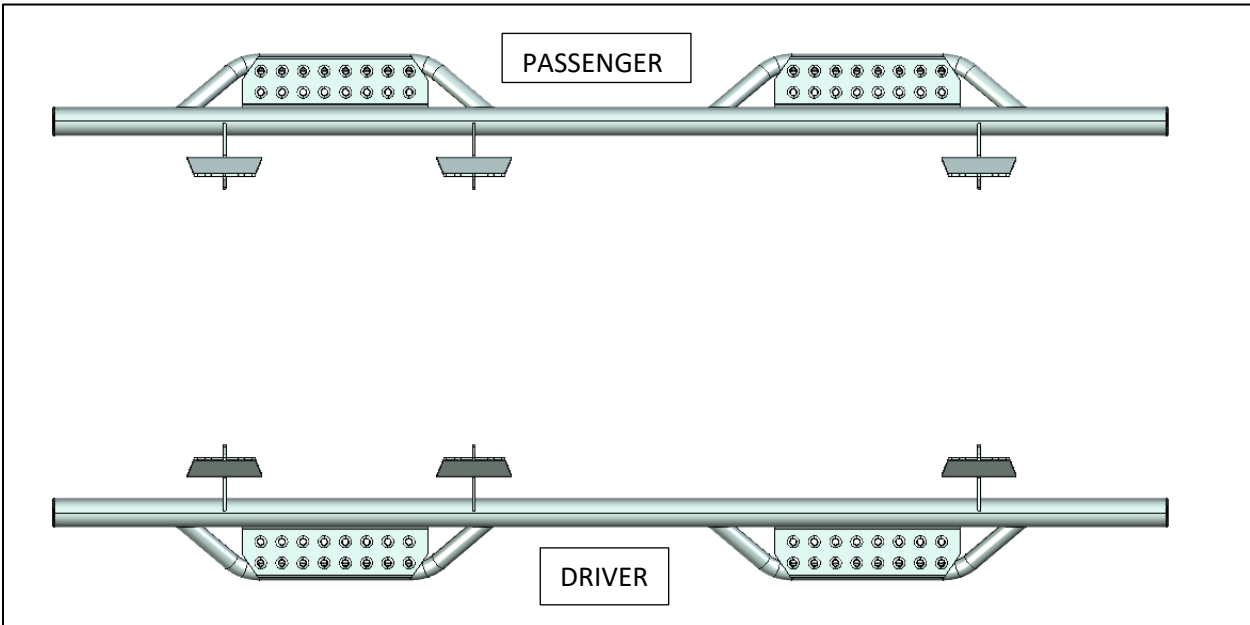


HARDWARE DESCRIPTION		QTY.
HWKT-00031X		
FLNT-00696X	M8-1.25 CLASS 8 SERRATED FLANGE NUT	18
FDRW-00736X	M8 FENDER WASHER	18

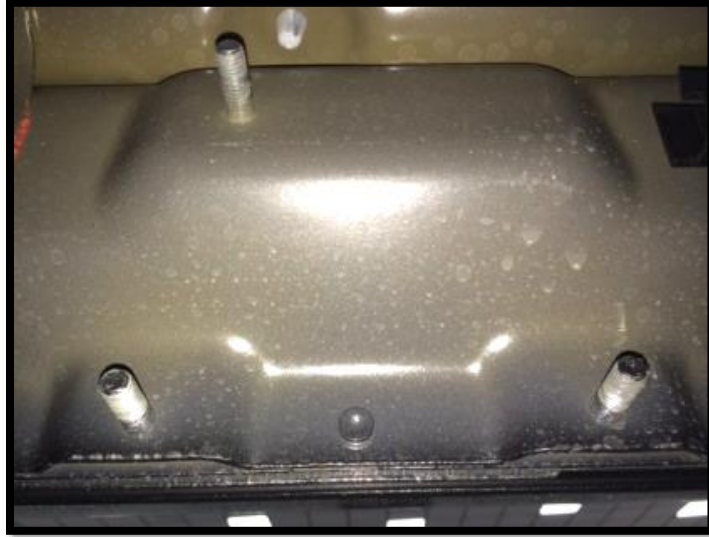


PARTS INCLUDED	QTY
DRIVER SIDE STEP	1
PASSENGER SIDE STEP	1

**Step 1:** Identify driver side step.



**Step 1:** Starting with the Driver Side. Remove all 8mm flange nuts from the 8mm factory threaded studs to remove the OE running boards.



**Step 2:** Next, carefully raise the step assembly into position and align the three brackets with the nine 8mm OE threaded studs.

**Step 3:** Using the supplied 8mm flanged nuts, fasten all nine mounting positions. Leave loose at this time.

**Step 4:** Beginning at the rear bracket, push upwards on the tube to align with the body then tighten only the lower rear fastener at this time.

**Step 5:** Next, move to the front bracket, push upwards on the tube to level with the body. Tighten all three fasteners.

**Step 6:** Tighten the remaining fasteners on the middle and rear bracket.

**Step 7:** Repeat steps 2-6 for passenger side.

