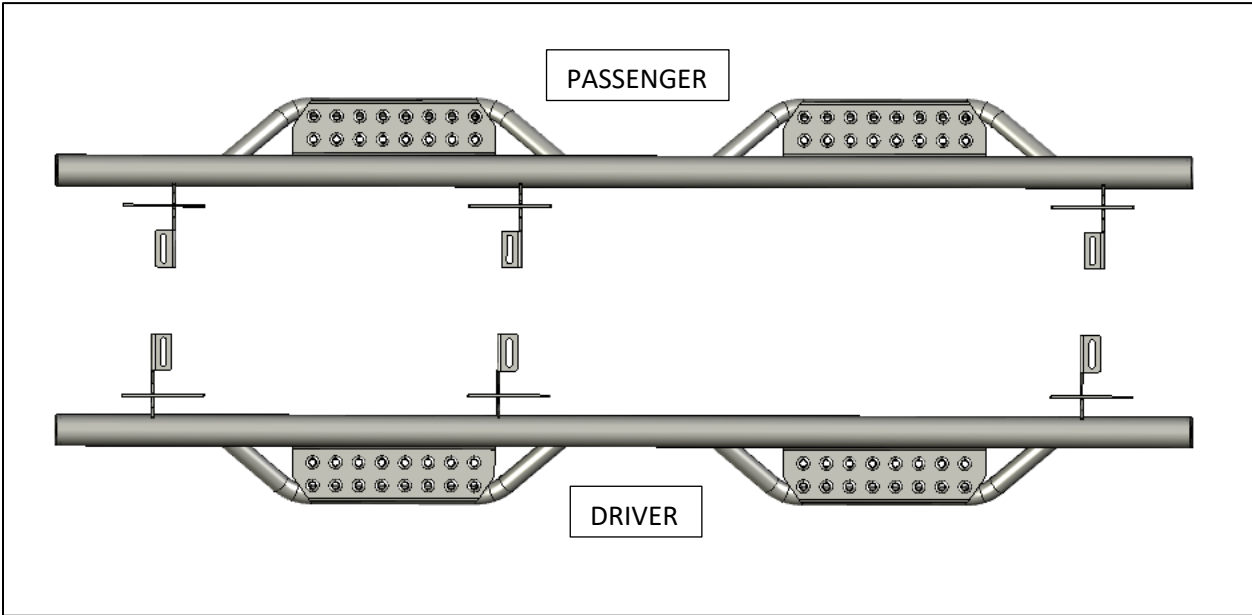


HARDWARE DESCRIPTION	QTY.
<b>KIT# HWKT-05321X</b>	
M8x30mm flanged hex bolt with washer	6
M8x25mm Flanged hex head bolt	8
M8 flanged nuts	8

PARTS INCLUDED	QTY
DRIVER SIDE	1
PASSENGER SIDE	1



**Step 1.** Identify the driver side step.



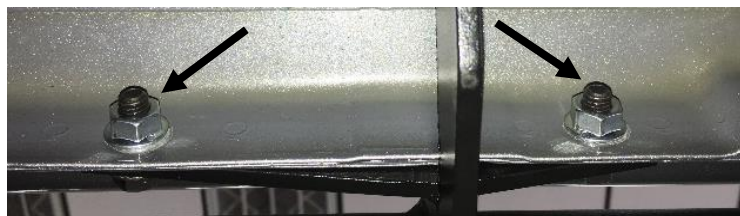
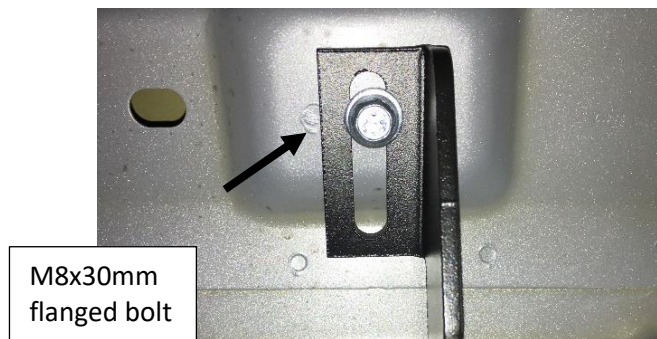
**Step 2.** Remove the factory running boards and discard.



**Step 3.** Carefully raise step up into position and align the brackets with the factory mounting points with the horizontal part of the bracket on the outside of the pinch weld.

**Step 4.** Next, start one of the supplied M8x30mm hex head flanged bolts starting with the center bracket in the factory threaded hole and leave loose.

**Step 5.** Install two supplied M8x25mm black zinc flanged bolts and two M8 flanged nuts in the pinch weld mounts in the front and rear brackets and leave loose.



**Step 6.** Continue installing the two remaining M8x30mm bolts in the front and rear brackets and leave loose.

**Step 7.** Adjust the nerf-step where the main bar is level with the body of the vehicle.

**Step 8.** First, tighten all the hardware that attaches the bracket to the pinch weld of the vehicle.



**Step 9.** Next, tighten the remaining hardware that attaches the bracket to the upper body mount.



**Step 10.** Repeat steps 3-9 for the passenger side.