

Preparation:

- Disconnect the negative battery terminal. Park the vehicle on level ground and set the emergency brake.
- We recommend reading through the installation instructions in whole before performing the work.
- Estimated Installation Time: **2 Hours for OEM Removal/Bumper Installation**

1 Additional Hour to Wire Lights

*****This installation requires 2 people for best results*****

*****Labor Rates are based on a vehicle with no pre-existing damage. Wiring labor is based on a standard wiring procedure with light switches installed in an easily accessible location. Custom light triggering or switch mounting location will result in a greater labor charge.*****

You will need the following tools:

- | | | |
|-----------------------------|-----------------------------|----------------|
| - Ratchet | - 12mm Socket | - 17mm Socket |
| - 7/32" Allen Wrench/Socket | - 5/16" Allen Wrench/Socket | - 9/16" Wrench |
| - 3/4" Socket & Wrench | | |

Included in Kit:

- | | |
|---|---|
| 4 - Hex Head Bolts (1/2"-13 x 1 1/2") | 8 - Flat Washers (1/2") |
| 4 - Nylon Lock Nuts (1/2"-13) | 2 - Black Button Head Bolts (1/2"-13 x 1 1/2") |
| 2 - Black Flat Washers (1/2") | 2 - Black Nylon Lock Nuts (1/2"-13) |
| 4 - Black Button Head Bolts (3/8"-16 x 1") | 4 - Black Flat Washers (3/8") |
| 4 - Black Nylon Lock Nuts (3/8"-16) | 2 - Frame Mount Brackets |
| 2 - Upper "L" Brackets | |

Removal:

1. From underneath the truck, just behind the bumper on the driver side, unplug the two bumper harness connectors and the trailer plug connector. (Fig A)

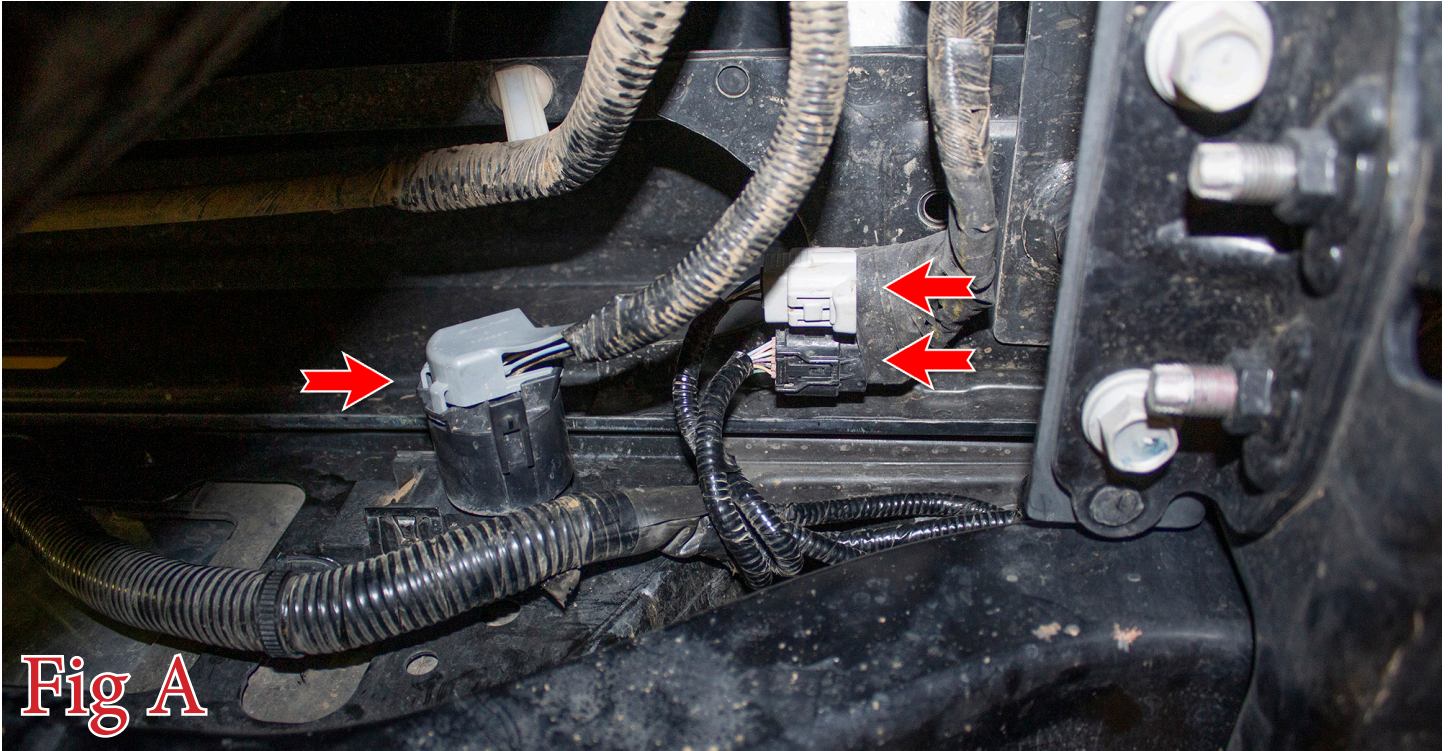


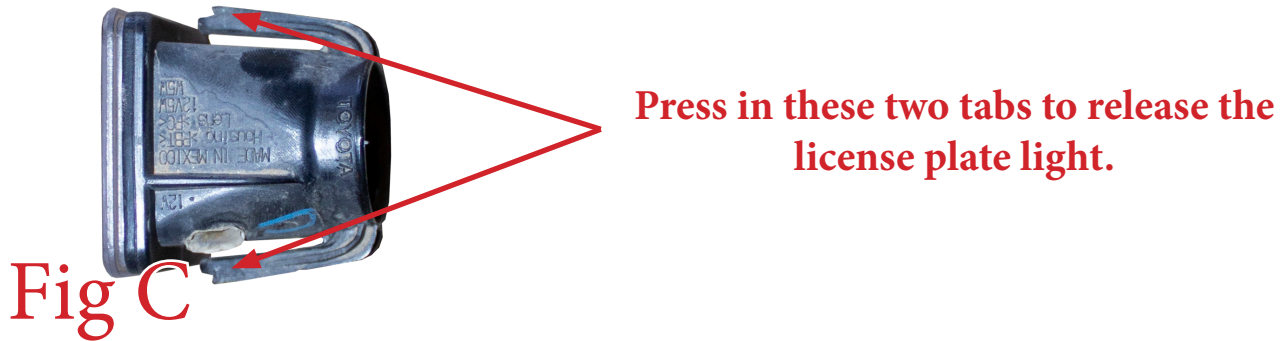
Fig A

2. Remove the trailer plug by pressing in the two tabs on the back side of the plug and pushing the plug out the front side of the bumper. (Fig B)

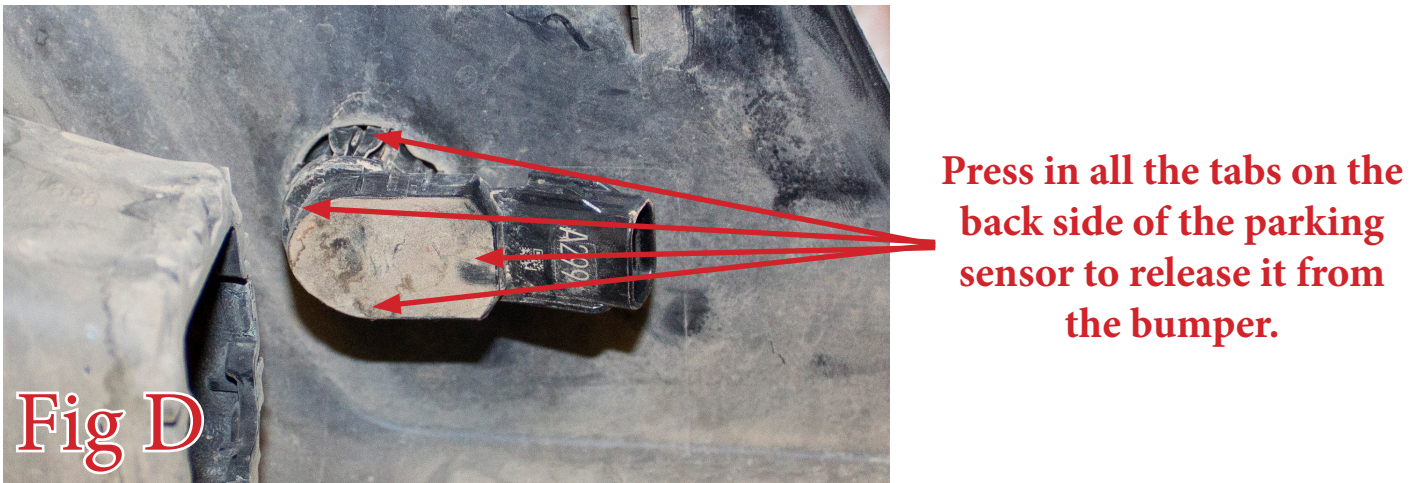


Fig B

3. Twist the license plate lights free from their housings. Then, press in the tabs on the back side of the license plate light housings to free those from the bumper. (Fig C)



4. Take note of the position/orientation of the parking sensors so that they can be installed on the new bumper in the same position/orientation. Unplug the middle two parking sensors. Then, push in the 4 tabs on the back side of the middle two parking sensors and push the parking sensors out the front side of the bumper. (Fig D)



5. Remove your license plate. Then, plastic clip that was behind the license plate. (Fig E)

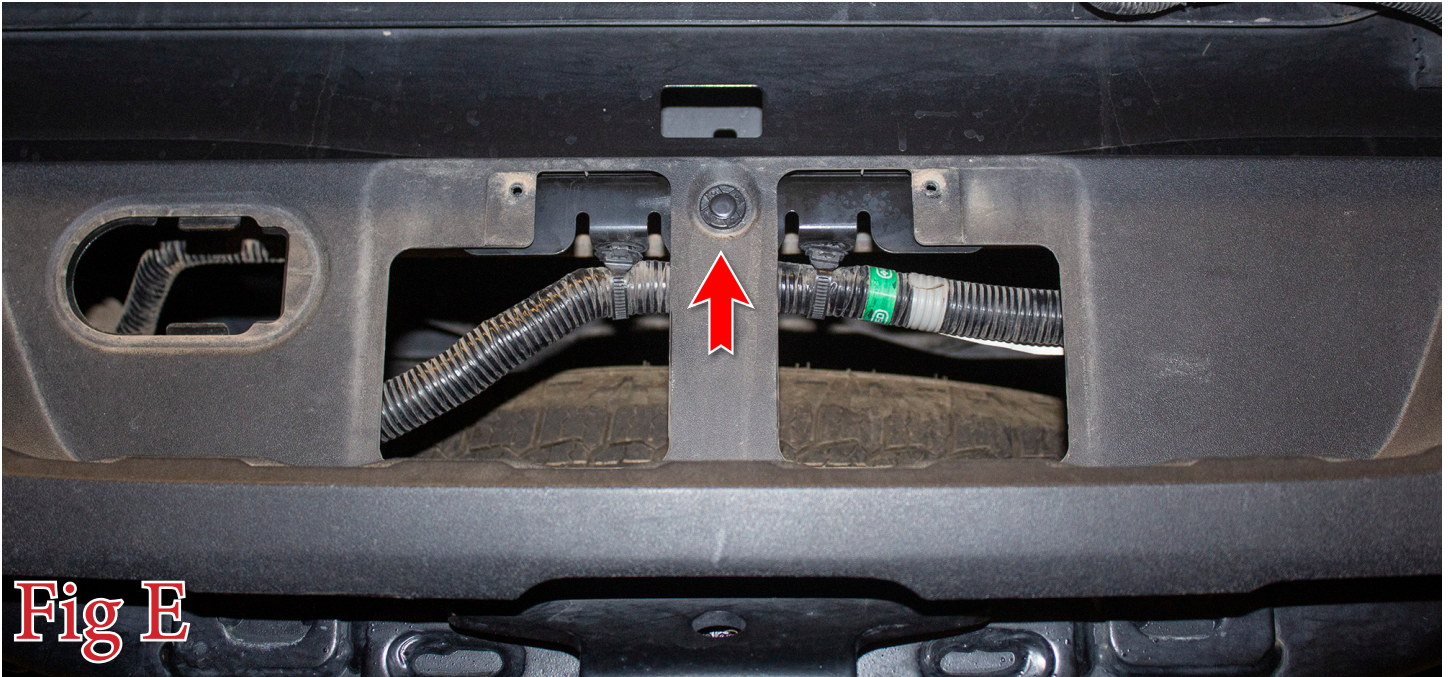


Fig E

6. Use a 12mm Socket or Wrench to remove the two bolts referenced in (Fig F). Then repeat this step on the other side of the bumper. **Save these bolts for reuse.**



Fig F

7. Using a 12mm Socket, remove the two bolts in the license plate area referenced in (Fig G).



Fig G

8. On the underside of the truck, remove the two lower bumper mounting bolts (per side). (Fig H)

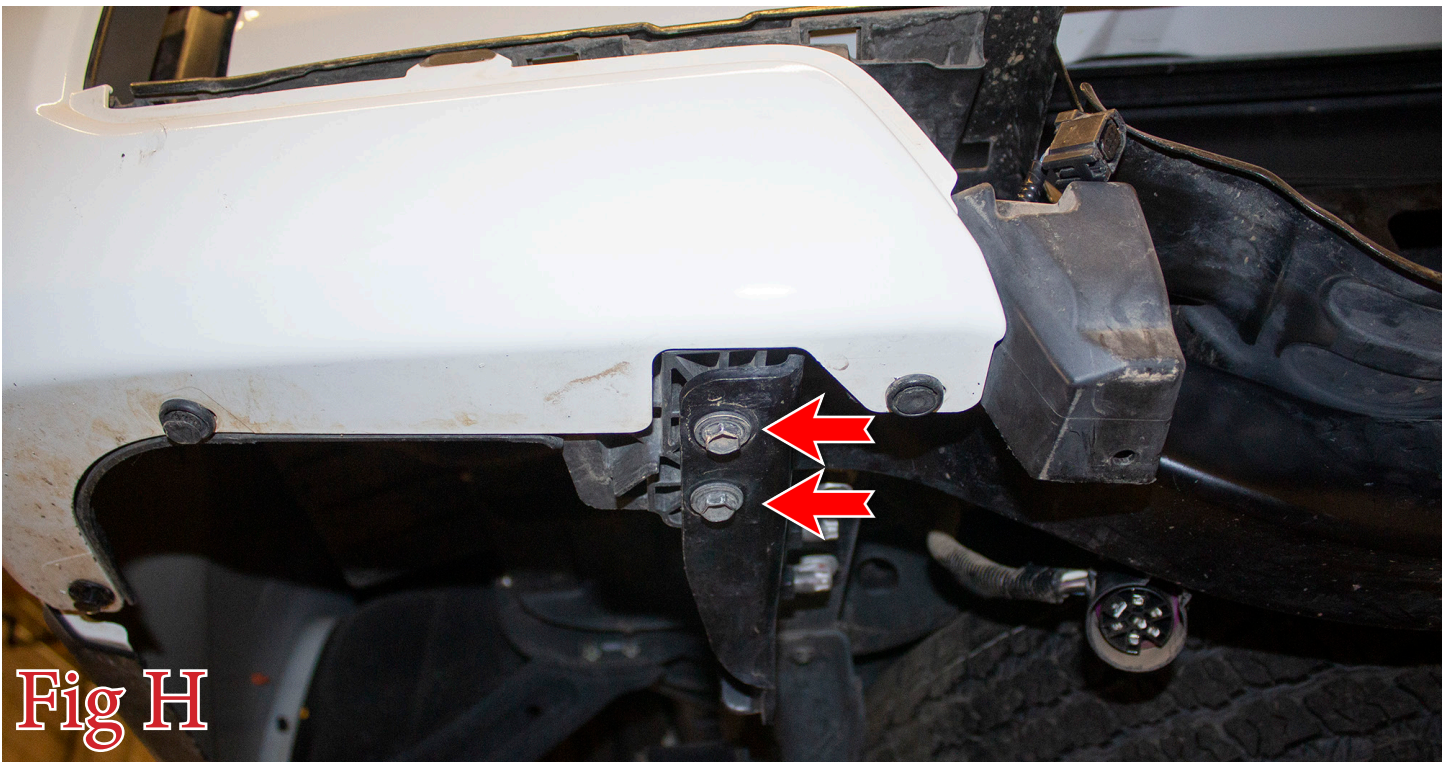


Fig H

- 9. Remove the OEM bumper from the truck.
- 10. Using a 17mm Socket, remove the three hitch bolts (per side) referenced in (Fig I).

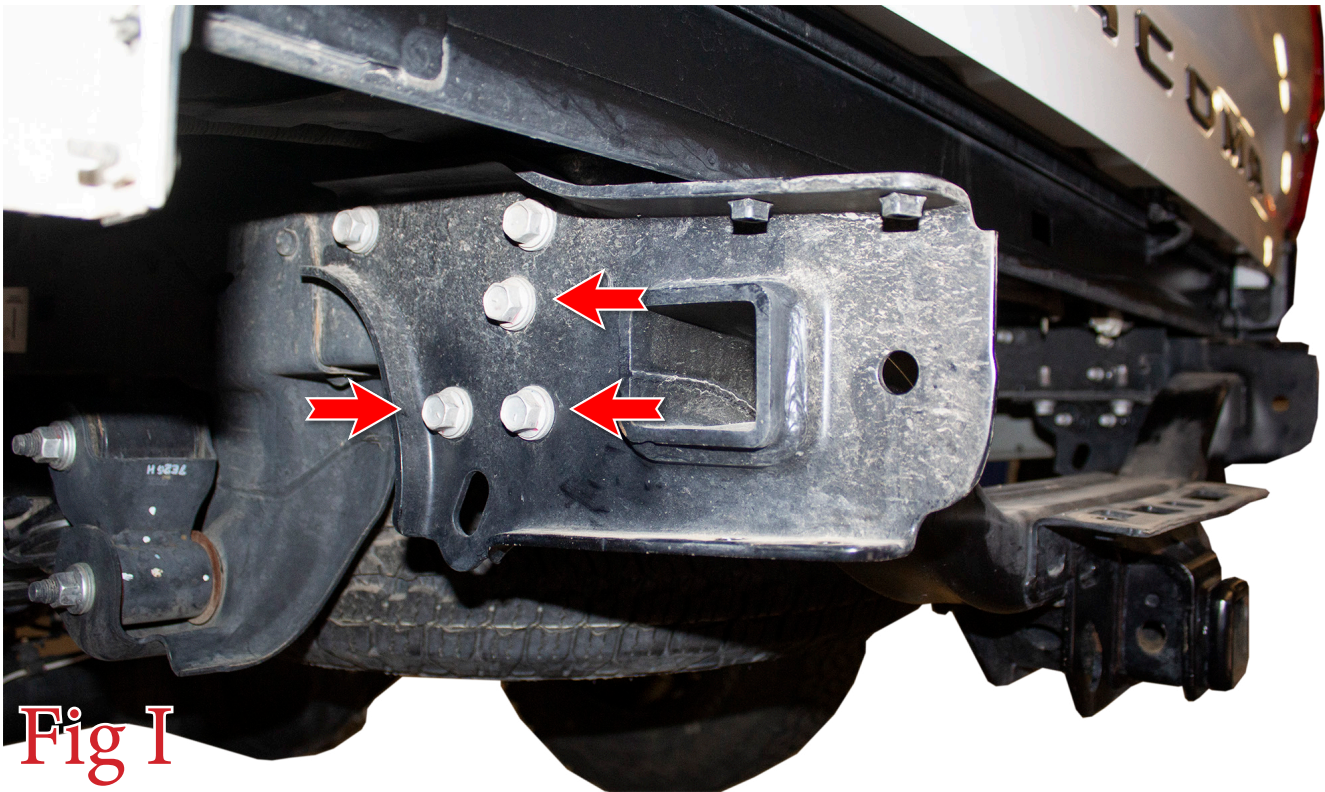


Fig I

- 11. Remove the five plastic clips (per side) that hold the side pods of the OEM bumper together. Then, split the front face of the bumper apart from the backing to gain access to the parking sensor. (Fig J)

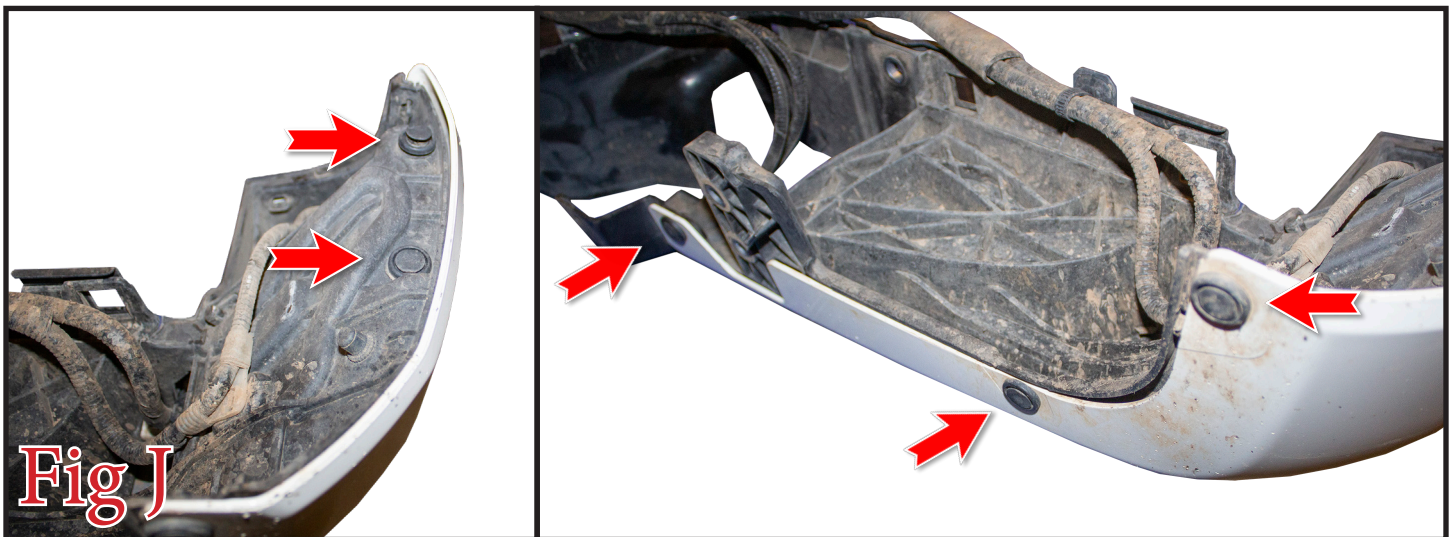


Fig J

12. Remove both outer parking sensors from the OEM bumper. Take note of the position/orientation of the parking sensors so that they can be installed on the new bumper in the same position/orientation. (Fig K)



Fig K

13. Unplug the blind spot modules. Then, remove the series of plastic clips holding the OEM bumper harness to the bumper. Remove the bumper harness from the OEM bumper. (Fig L)

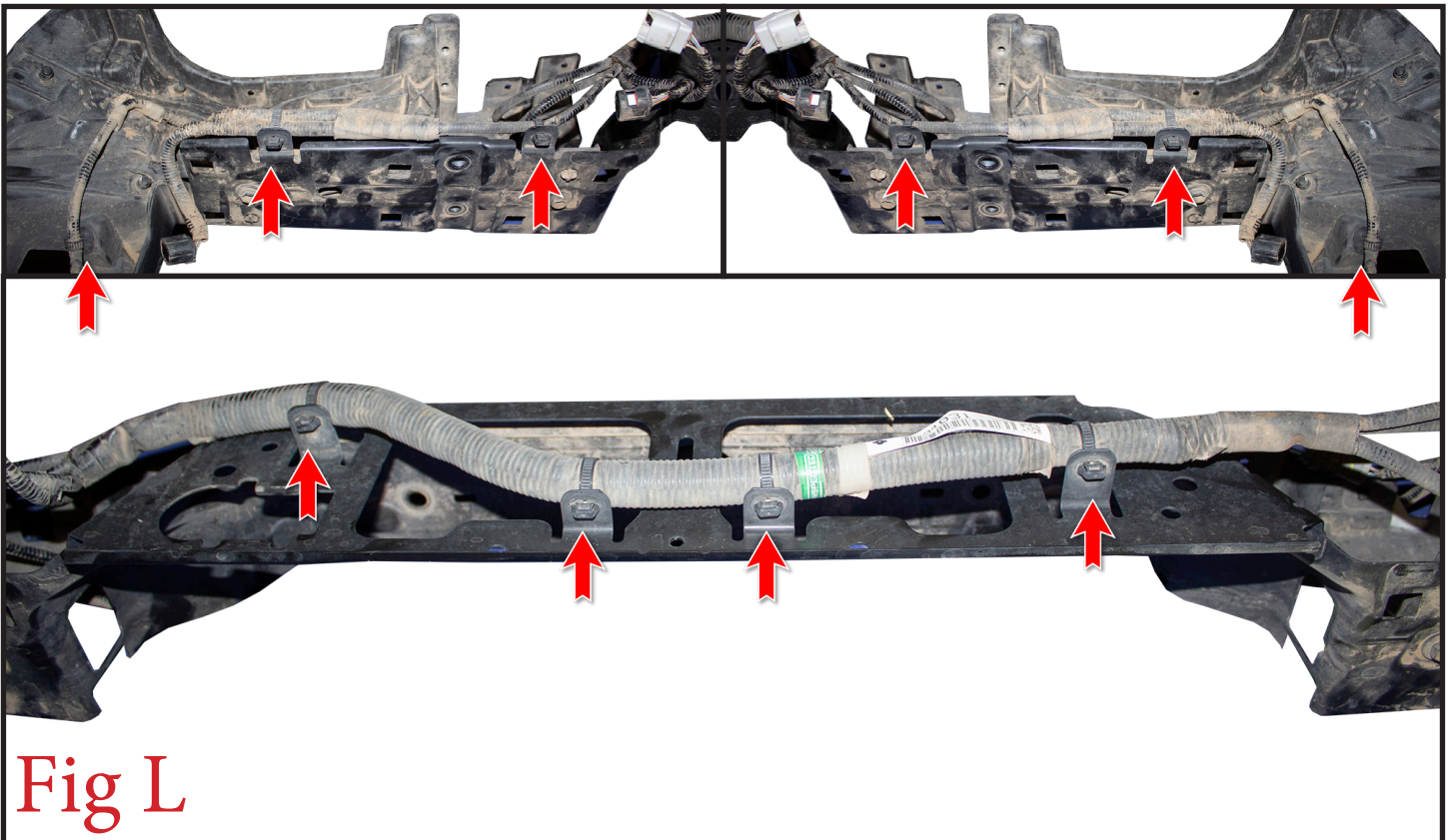


Fig L

Installation:

14. Install the parking sensors into the bumper from the front side of the bumper until they click into place. **Be sure to install them in the same position/orientation as they came off the OEM bumper.** (Fig M)

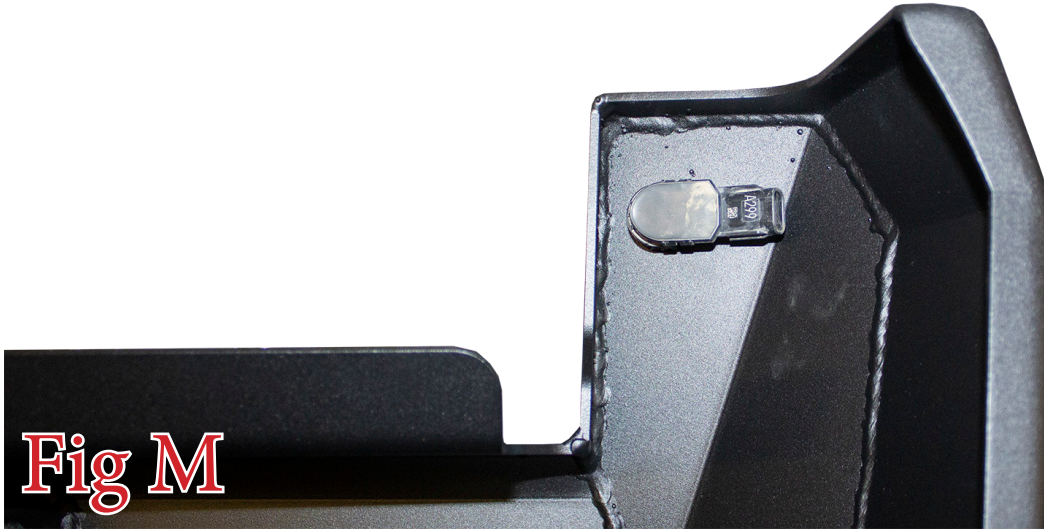


Fig M

15. Install the trailer plug by pressing it into its precut hole from the front side of the bumper. (Fig N)



Fig N

16. Push both license plate light housings into their precut holes on your new bumper. Make sure to install them in the same position/orientation as they came off the OEM bumper. (Fig O)



Fig O

17. Plug the OEM bumper harness into the license plate lights and parking sensors. Make sure the main connectors end up on the same side as they were on the OEM bumper. (Fig P)



Fig P

18. If you have any lights to install on your bumper, do so now. Follow the light manufacturer's guide for mounting and wiring information.

19. Find the supplied Frame Mount Brackets. Then, install them onto the truck's frame horns using the OEM bolts from Step 10 (x3), the supplied 1/2" Bolts (x1), 1/2" Washers (x2), 1/2" Lock Nuts (x1), 3/8" Black Bolts (x2), 3/8" Black Washers (x2), and 3/8" Black Lock Nuts (x2). Then repeat this step on the other side of the vehicle. Tighten the supplied 1/2" Bolts to 70 foot pounds, the 3/8" Bolts to 30 foot pounds, and the OEM bolts to the OEM torque spec. (Fig Q)

Use the supplied 1/2" Bolt here. Make sure the nut faces the outward.

Use the OEM Bolts Here.

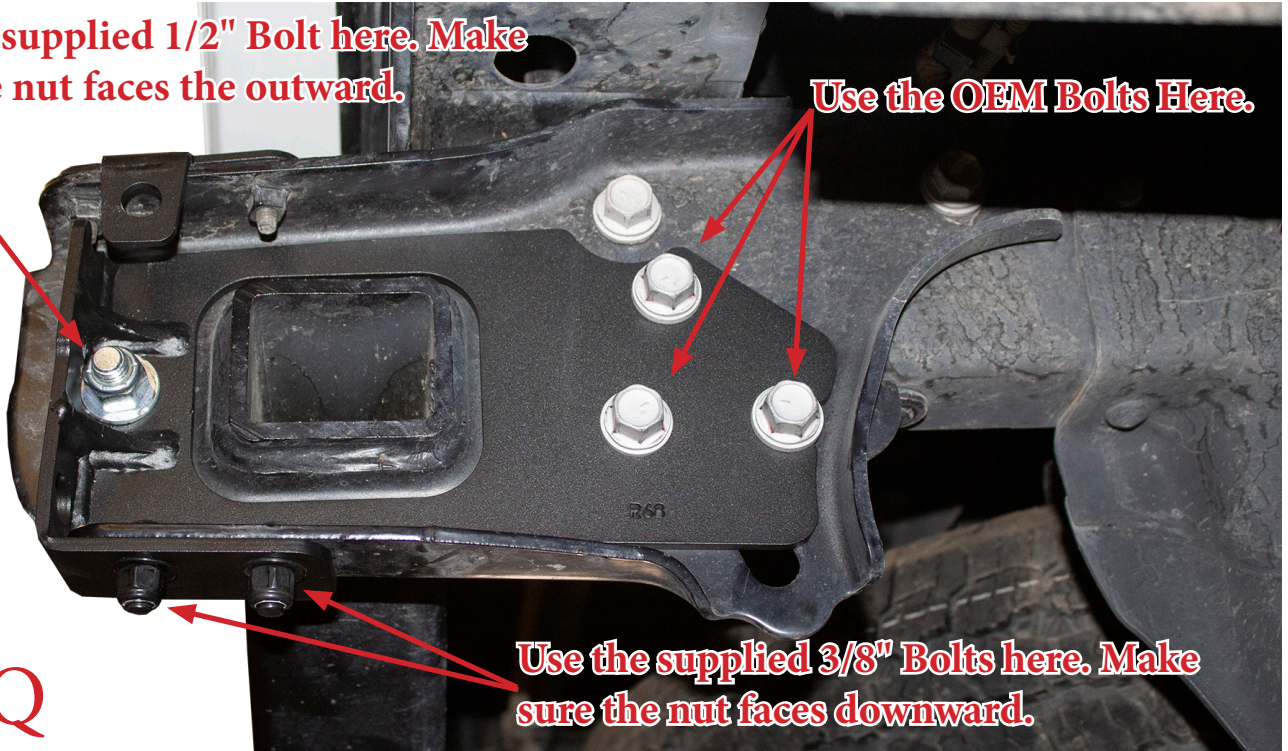


Fig Q

Use the supplied 3/8" Bolts here. Make sure the nut faces downward.

20. Using the OEM bolts from Step 6, put the Upper L Bracket in place. Torque these bolts to OEM torque spec. (Fig R)

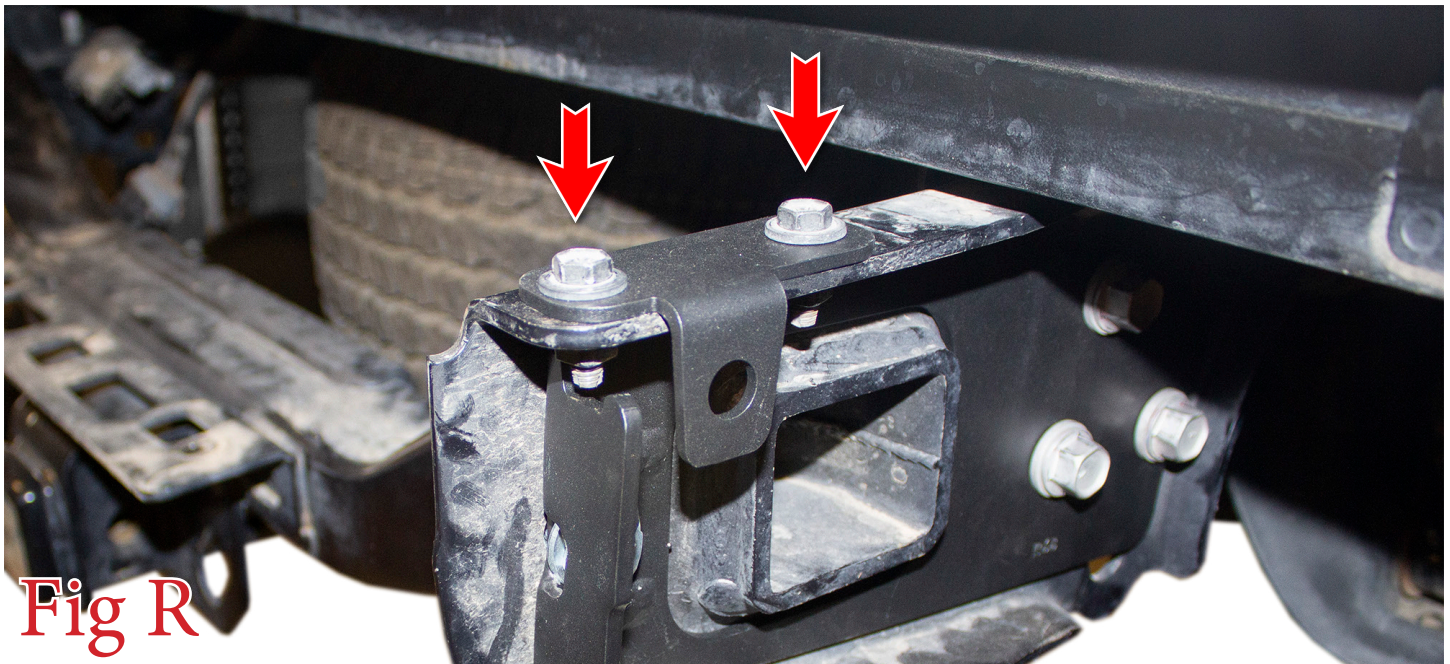


Fig R

21. Put the bumper in place on the vehicle. Use the supplied Black 1/2" Bolt (1 per side), Black 1/2" Washer (1 per side), and Black 1/2" Lock Nut (1 per side) in the bottom mounting hole. Leave these bolts loose for now. (Fig S)

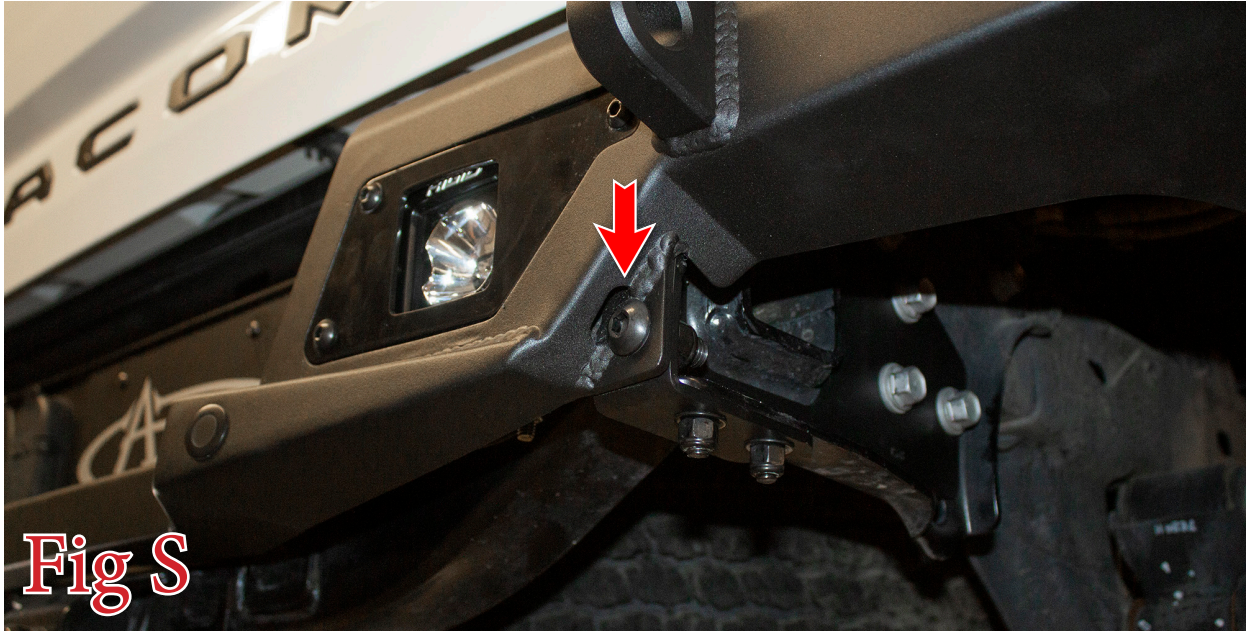


Fig S

22. Use the supplied 1/2" Hex Head Bolt (1 per side), 1/2" Washers (2 per side), and 1/2" Lock Nuts (1 per side) in the remaining bumper mounting hole. (Fig T)

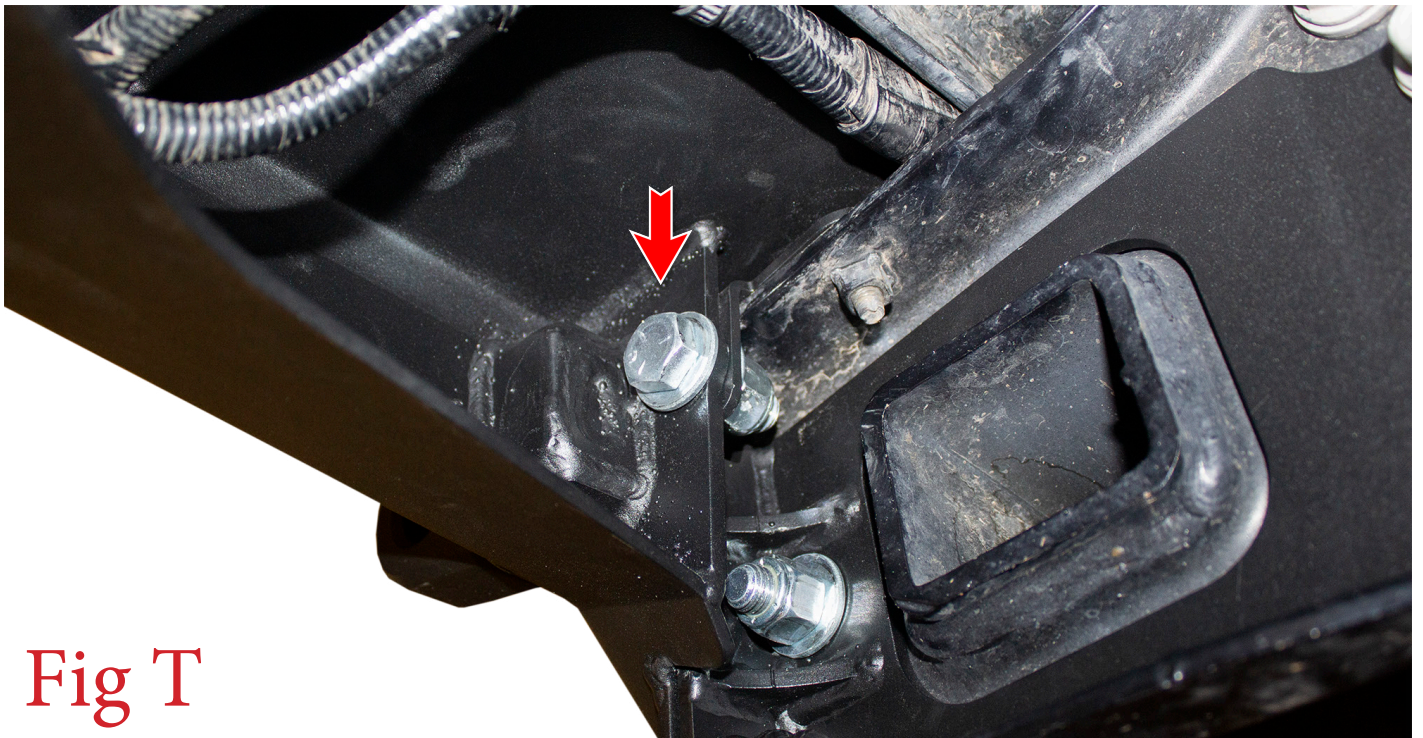


Fig T

23. Align your bumper so it is straight in relation to the tailgate. Then, torque the 1/2" Bumper Mounting Bolts to 70 foot pounds.
24. Stand back and enjoy your new ADD Stealth Fighter™ Rear Bumper.
25. Check and re-tighten, if needed, all mounting bolts after 100 miles and periodically thereafter.

