

## Preparation:

- Disconnect the negative battery terminal. Park the vehicle on level ground and set the emergency brake.
- We recommend reading through the installation instructions in whole before performing the work.
- Estimated Installation Time: **2 Hours for OEM Removal/Bumper Installation**

**1 Additional Hour to Wire Lights**

***\*\*This installation requires 2 people for best results\*\****

## You will need the following tools:

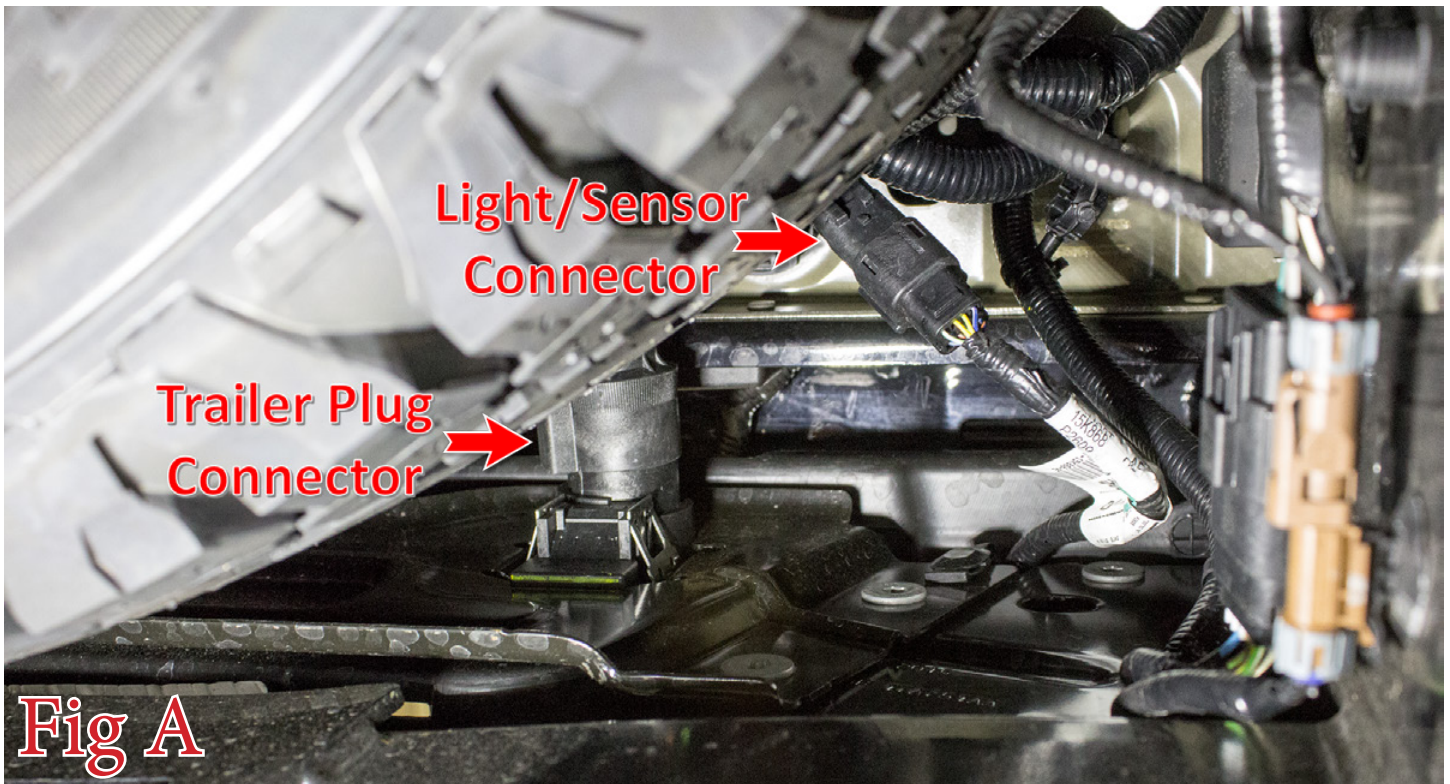
- |                |                   |                |
|----------------|-------------------|----------------|
| - Ratchet      | - 13mm Socket     | - 21mm Socket  |
| - 9/16" Socket | - T30 Torx Socket | - Cutoff Wheel |

## Included in Kit:

- |                                  |                              |
|----------------------------------|------------------------------|
| 8 - Hex Head Bolts (3/8-16 x 1") | 8 - Flat Washers (3/8")      |
| 8 - U-Nuts (3/8"-16)             | 2 - Bumper Mounting Brackets |

## Removal:

1. Unplug the connector on the back side of the trailer plug and the parking sensor/license plate light connector. The parking sensor/license plate light connect sits right next to the trailer plug connector and is accessible from underneath the truck. (Fig A)



**Fig A**

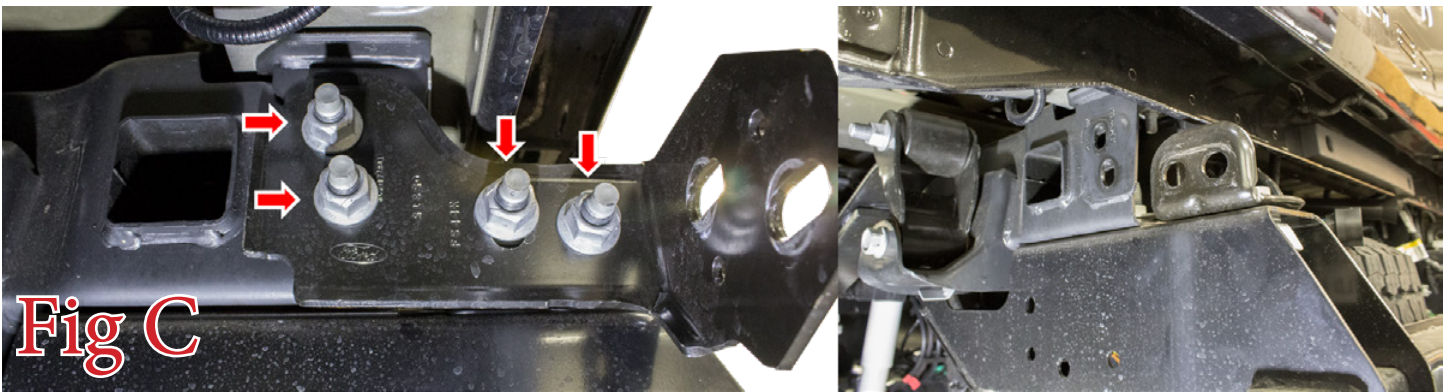


2. There are two outer bumper mounting bolts per side. Use a 21mm Socket to remove these bolts. Then, remove the OEM bumper. (Fig B)



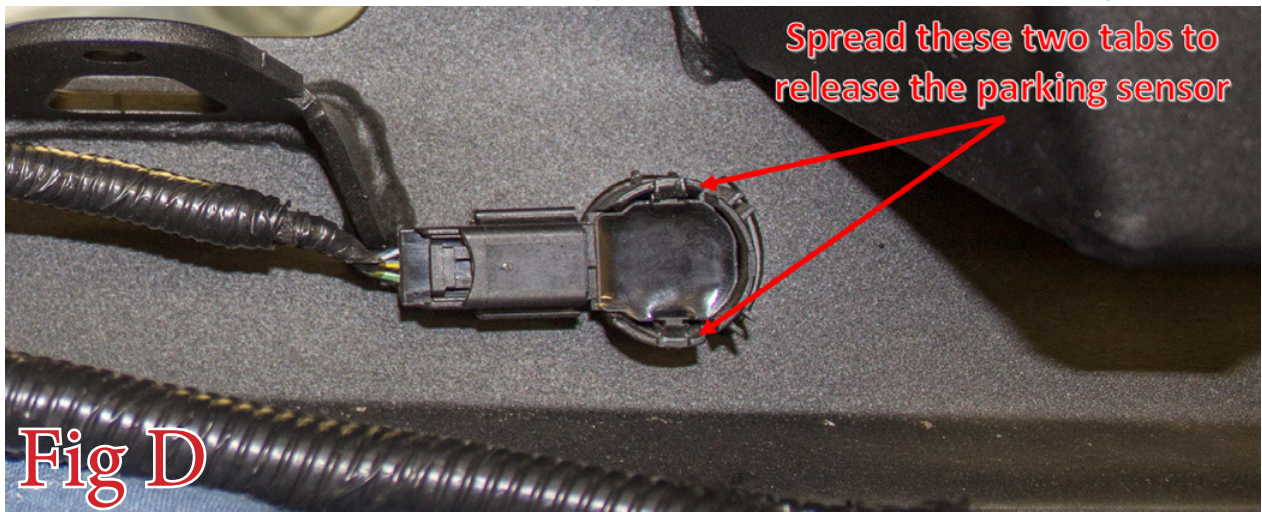
**Fig B**

3. Remove the OEM Bumper Mounting Brackets. Use a 21mm Socket to remove the four mounting bolts (per side). Then, remove the brackets. (Fig C)



**Fig C**

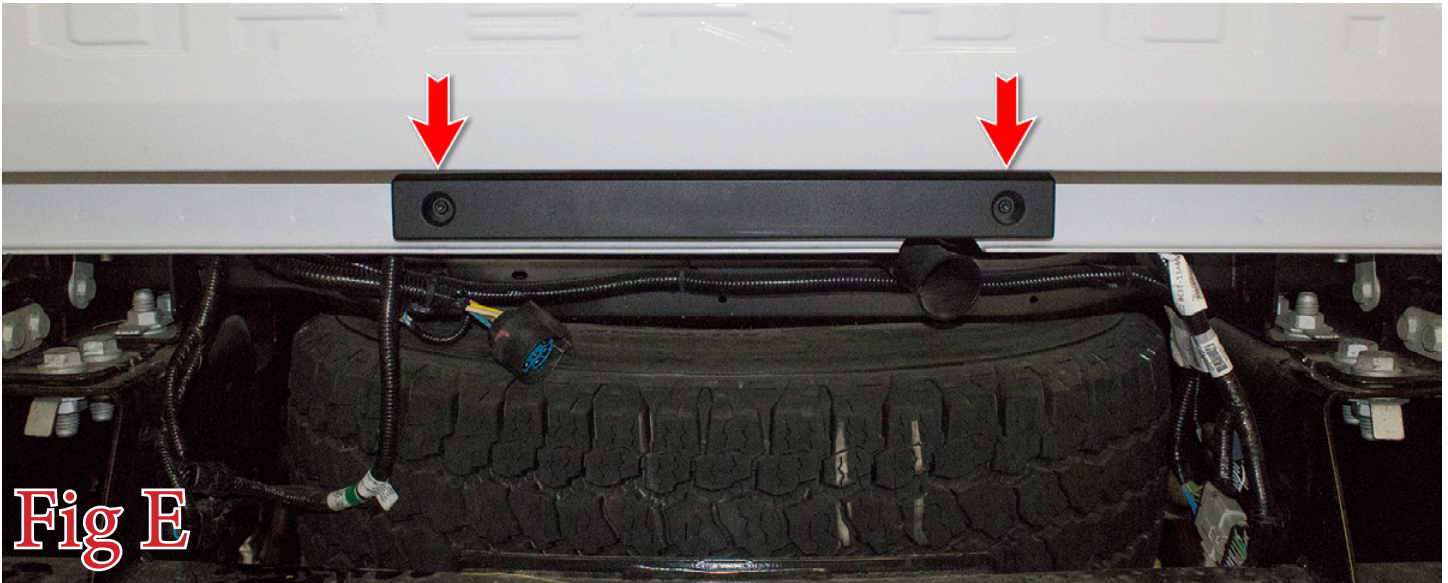
4. Remove the parking sensors from their outer mounting rings. Do this by spreading the two tabs on the back side of the outer mounting ring. Then, push the sensor out the back side of the mounting ring. Leave the parking sensors plugged into the rear bumper wiring harness. Make sure to keep track of where each sensor was mounted on the OEM bumper. You have to mount them on your new bumper in the same order. (Fig D)



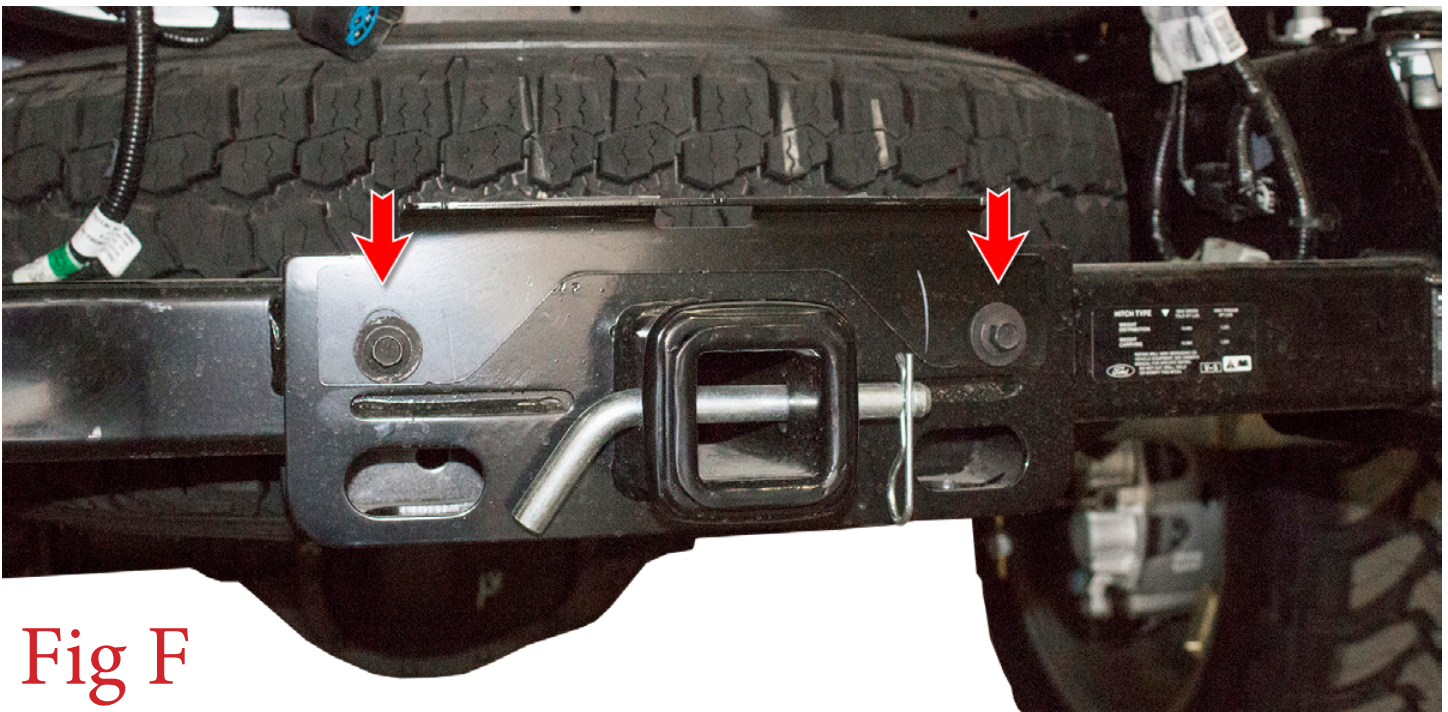
**Fig D**



5. Use a T30 Torx Socket to remove the plastic trim piece directly under the tailgate. (Fig E)



6. Remove the metal bracket on the top side of the trailer hitch. Do this by using a 13mm to remove both mounting bolts. (Fig F)







7. On the passenger side of the vehicle, where the tailgate damper bolts to the body, cut the bracket as shown in (Fig G). This is made of aluminum, so painting the bare metal is not essential.

**Before**

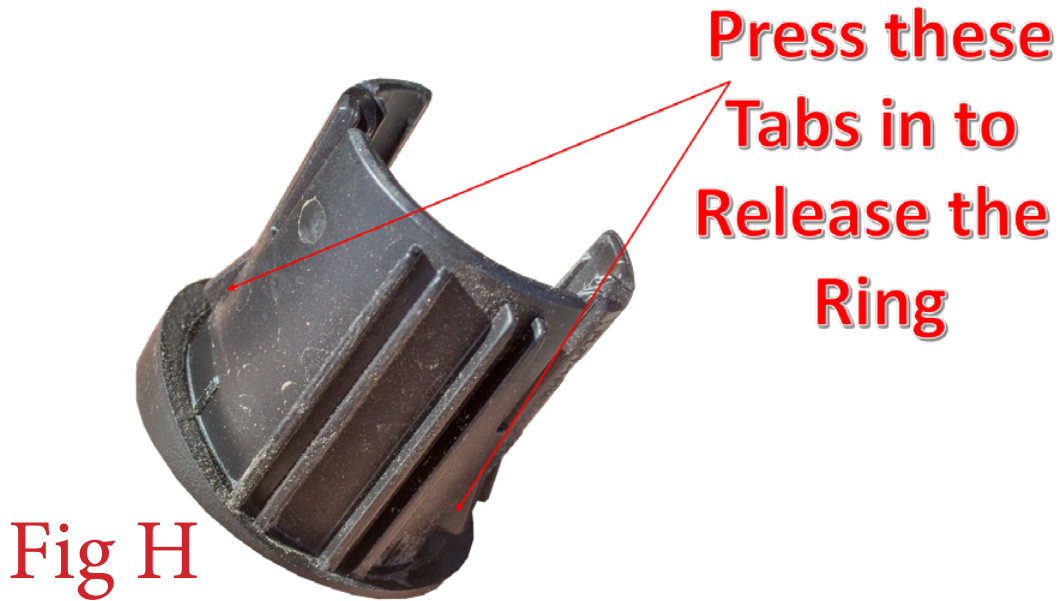


**After**





8. Remove the parking sensor mounting rings from the OEM Bumper. Do this by pressing in the tabs shown in (Fig H) and pushing the sensor out the front side of the bumper. Pay attention to the order and orientation of these rings so you can install them in the same order/orientation on your new bumper.



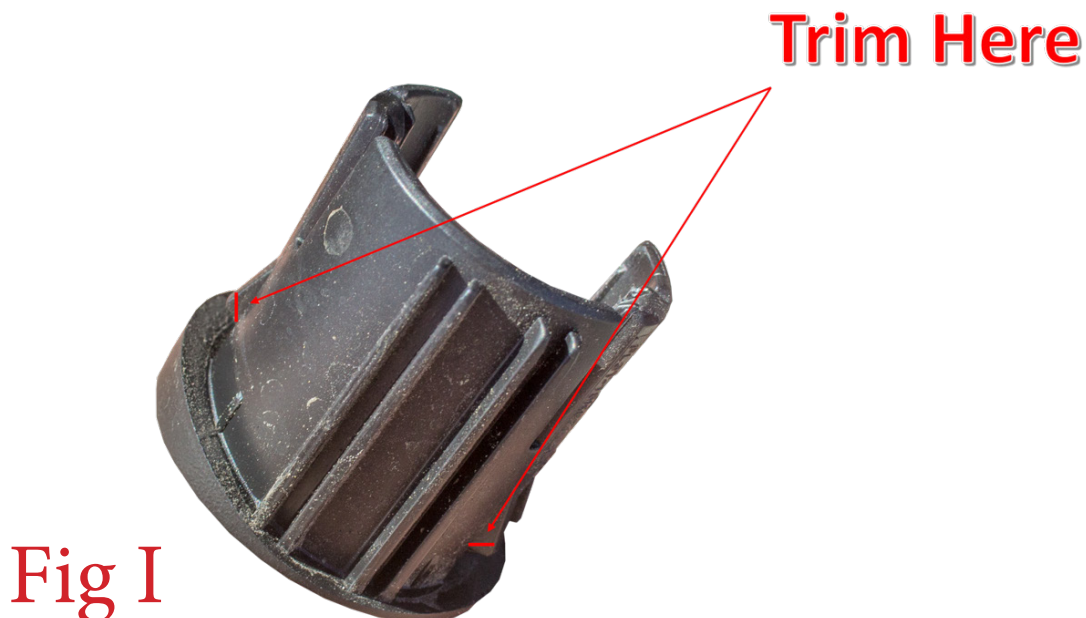
9. Remove the license plate light housings from your OEM Bumper by pressing in the tabs on the back side of the housings and pushing the housings out the front side of the bumper.

10. Use the vehicle's key to unlock the spare tire lock and remove it from the OEM bumper.

11. Remove the trailer plug from your OEM bumper by pressing in the tabs on the back side of the trailer plug and pushing the trailer plug out the front side of the bumper.

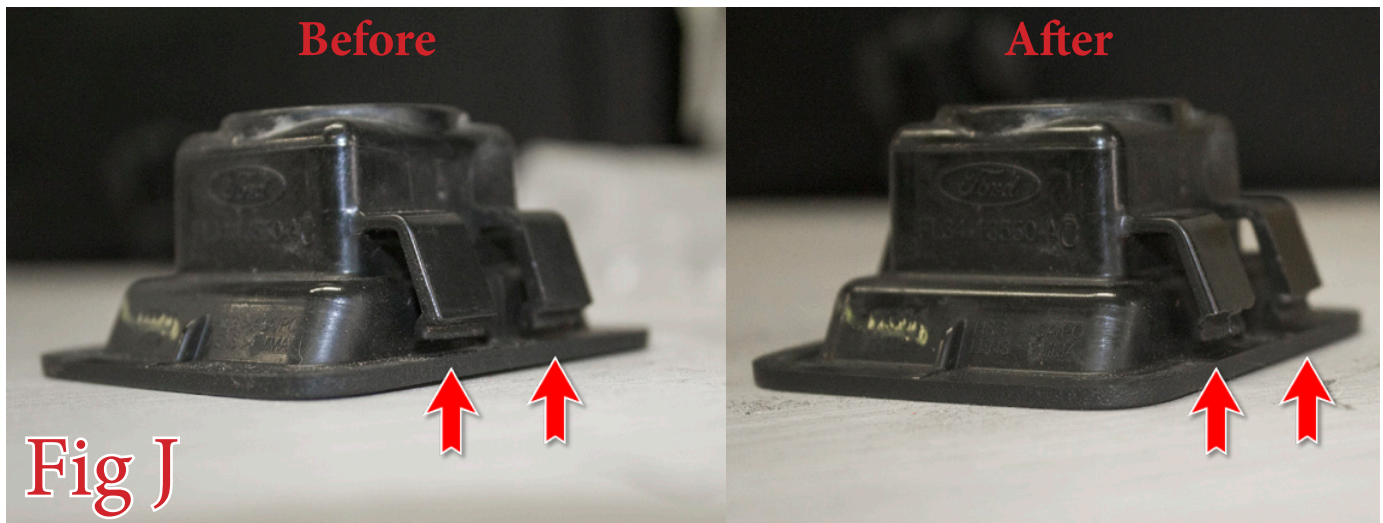
**Installation:**

12. Install the parking sensor mounting rings on your new bumper. Press them into their pre-cut holes until they lock into place. If you are having issues getting them to lock into place, you may have to trim the mounting tabs slightly to account for the thicker panel size of your new bumper. (Fig I) shows where to trim the rings.





13. Install the license plate light housings on your new bumper by pressing them into their precut holes until they lock into place. If they will not lock into place, you may have to trim the tabs on the back side as shown in (Fig J).



14. Install the OEM rear bumper harness (with parking sensors and license plate lights still attached) to your new bumper. Press the parking sensors into the outer mounting rings from the back side of the rings and twist the license plate lights into place. Make sure to install the harness with the main plug on the same side as it was on the OEM bumper. (Fig K)



15. Use the vehicle's key to install the spare tire lock on your new bumper. Push the lock through the holes and turn the key to the locked position.
16. Install the trailer plug on your new bumper by pressing it into its precut hole until it locks into place.
17. If you have lights to install on your bumper, now is a good time to do so. Please follow the light manufacturer's guide for mounting/wiring information.

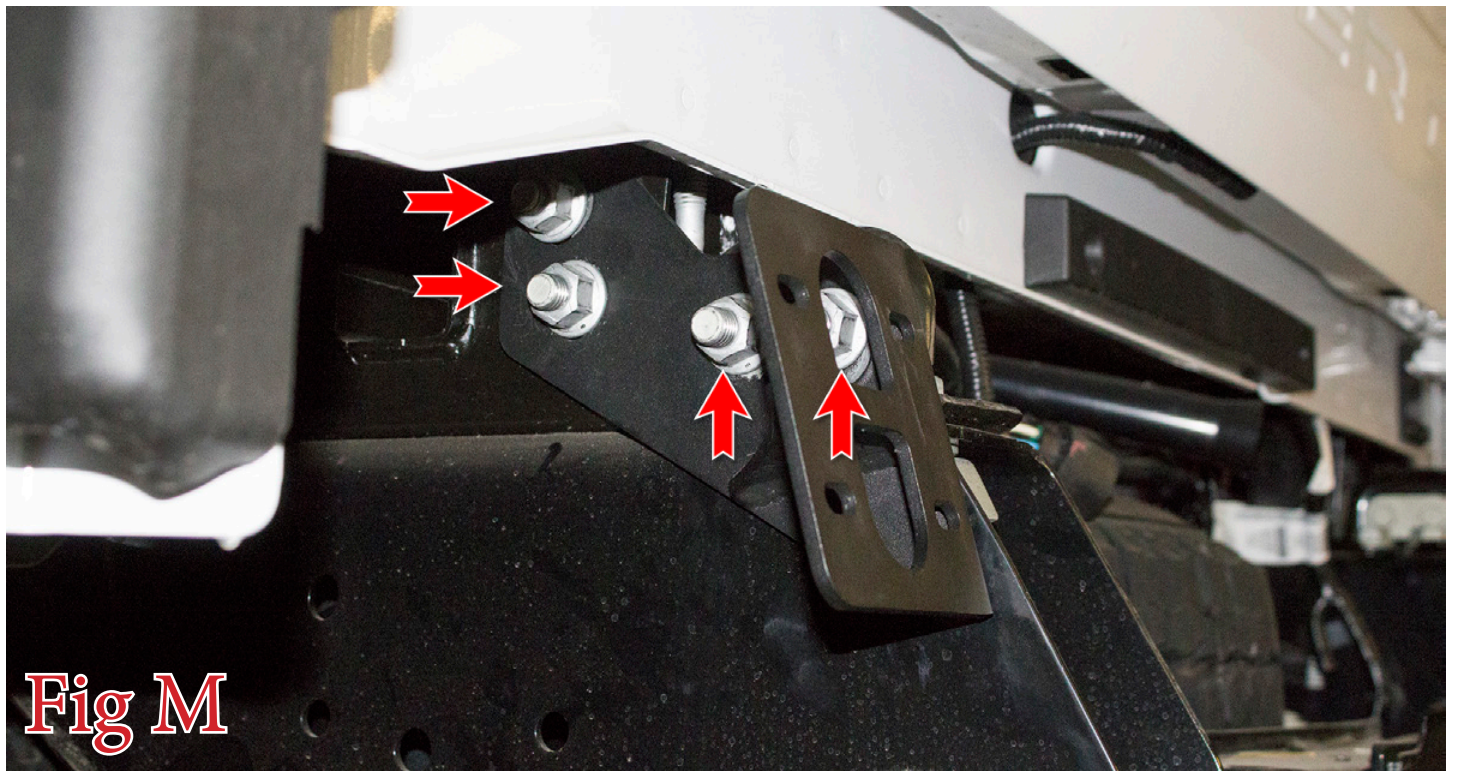


18. Install the supplied U-Nuts (x8) into the mounting holes on the back side of your new bumper. (Fig L)



**Fig L**

19. Install the supplied Bumper Mounting Brackets (x2) on the vehicle. Use the OEM hardware that was removed in Step 3 to secure the Mounting Brackets to the vehicle. Leave these bolts loose for now. (Fig M)



**Fig M**





20. Line the mounting holes on the Bumper Mounting Brackets up with the newly installed U-Nuts on the back side of the bumper. Secure the bumper to the vehicle by installing the supplied 3/8" Bolts (x8) and 3/8" Washers (x8) from the back side of the mounting brackets. Leave these bolts loose for now. (Fig N)



Fig N

21. Align the bumper so it is centered left to right and also straight in relation to the tailgate. Look at the bumper from the side and make sure it is not rotated up or down. Then, go back and tighten all mounting bolts from Steps 19 & 20. Tighten the supplied 3/8" Bolts to 25 foot pounds. Tighten the OEM bolts to OEM torque spec.
22. Plug in both connectors from Step 1
23. Stand back and enjoy your new ADD Stealth Fighter™ Rear Bumper.
24. Check, and re-tighten if needed, all mounting bolts after 100 miles and periodically thereafter.



