

## Preparation:

- Disconnect the negative battery terminal. Park the vehicle on level ground and set the emergency brake.
- We recommend reading through the installation instructions in whole before performing the work.
- When button head bolts are being used, install the supplied washer on the nut side. Then, hold the bolt stationary and only turn the nut to tighten. Do not turn the bolt to tighten hardware assembly, unless otherwise noted.
- Estimated Installation Time: **3 Hours for OEM Removal/Bumper Installation**

### **1 Additional Hour to Wire Lights**

*\*\*This installation requires 2 people for best results\*\**

*\*\*Labor Rates are based on a vehicle with no pre-existing damage. Wiring labor is based on a standard wiring procedure with light switches installed in an easily accessible location. Custom light triggering or switch mounting location will result in a greater labor charge.\*\**

## You will need the following tools:

- |                   |                                |                        |
|-------------------|--------------------------------|------------------------|
| - Ratchet         | - 10mm Socket                  | - 15mm Socket          |
| - T10-Torx Socket | - Epoxy (or something similar) | - 3/4" Socket & Wrench |

## Included in Kit:

- |  |  |
|--|--|
| <b>4</b> - Hex Head Bolts (1/2"-13 x 1 1/2") | <b>8</b> - Flat Washers (1/2")             |
| <b>4</b> - Nylon Lock Nuts (1/2"-13)         | <b>2</b> - License Plate Mounting Brackets |

## Removal:

1. From underneath the vehicle on the driver side, unplug the two connectors referenced in (Fig A).

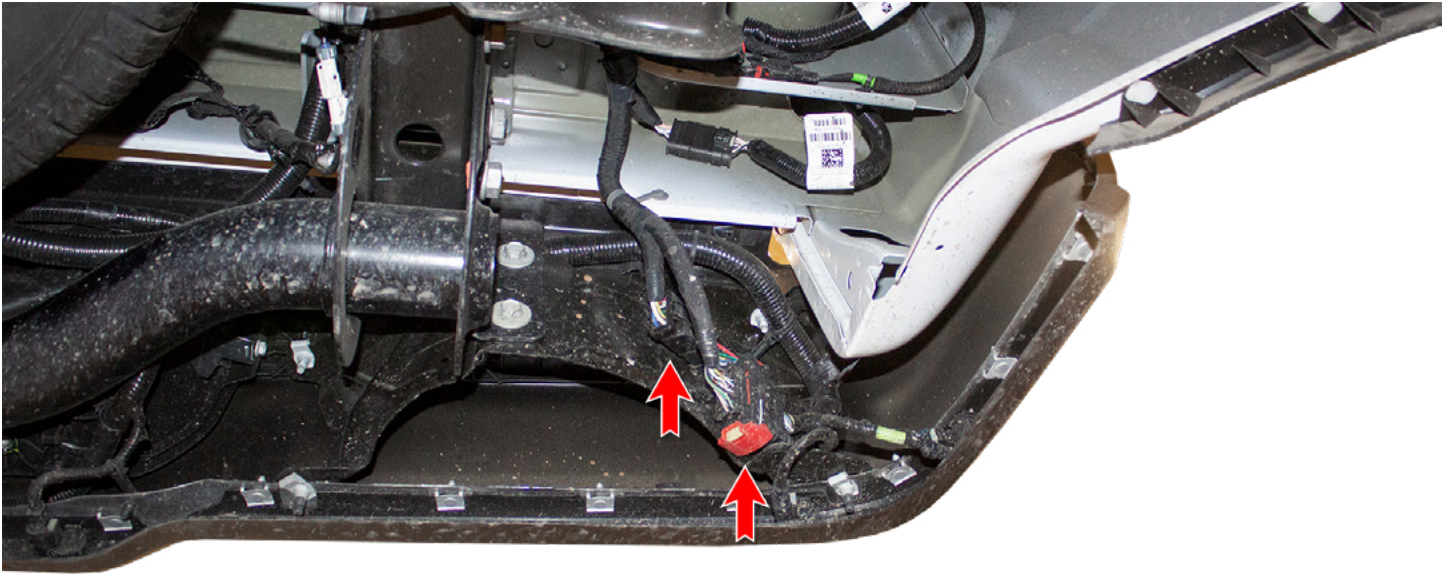


Fig A

2. From underneath the vehicle, unplug the connector on the back side of the trailer plug. Then, unplug the connector right next to the trailer plug. Cut the zip ties that attach that second connector the bumper harness. (Fig B)

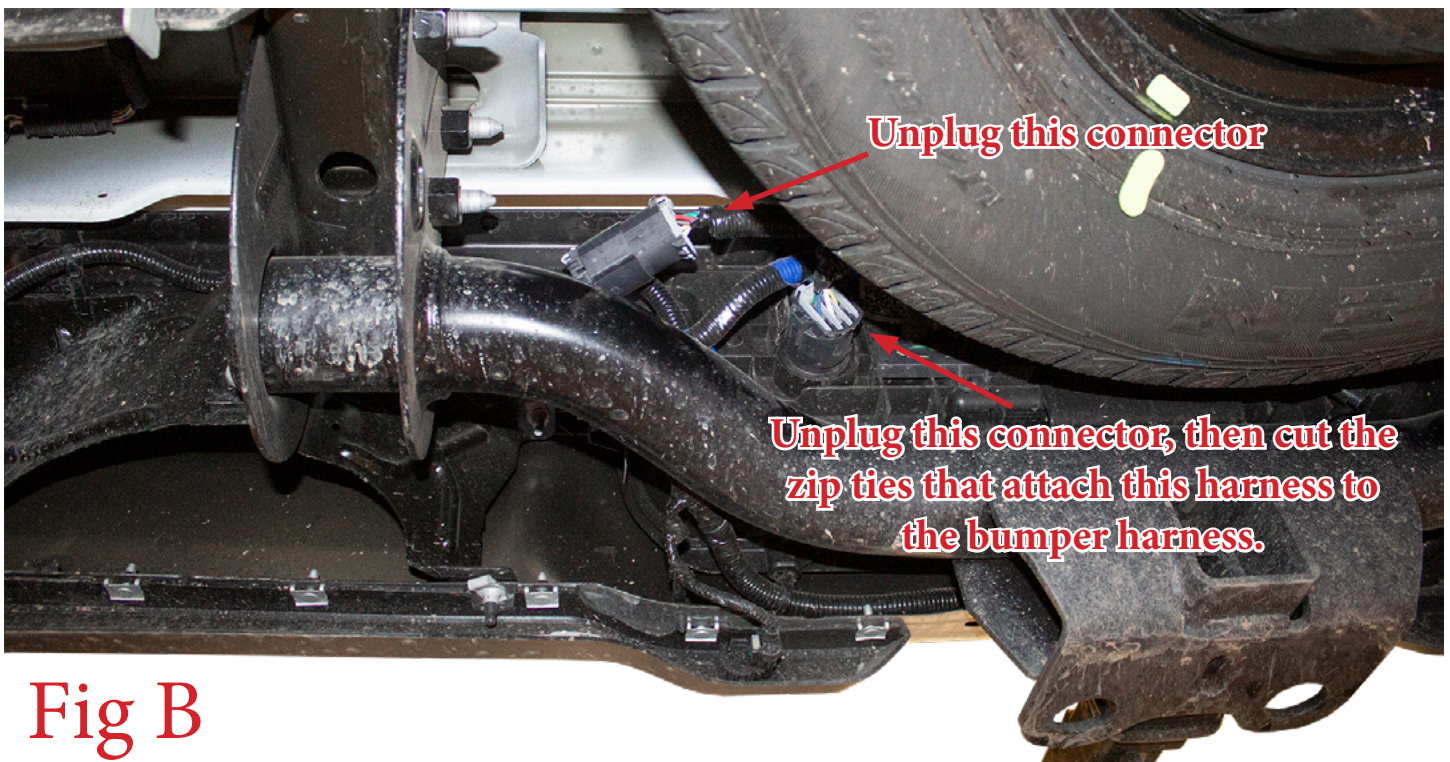


Fig B

3. Remove the license plate from your OEM bumper. Then, remove the two plastic clips and the two bolts (15mm) that sit behind the license plate. (Fig C)

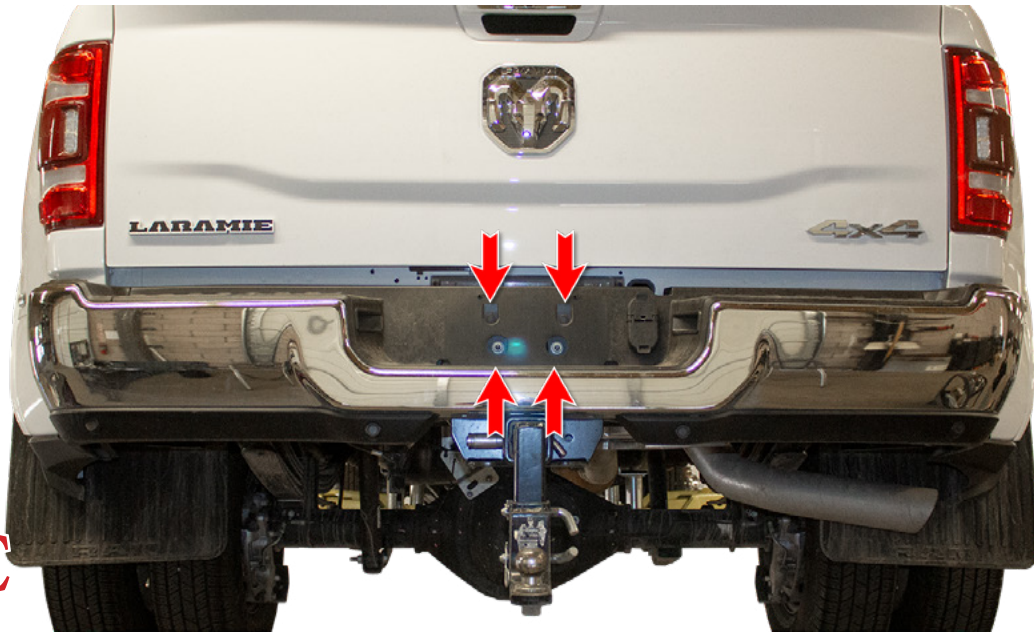


Fig C

4. From underneath the vehicle, use a 15mm Socket to remove the two mounting bolts (per side) that hold the OEM bumper to the vehicle. Then, remove the OEM bumper from the vehicle. (Fig D)

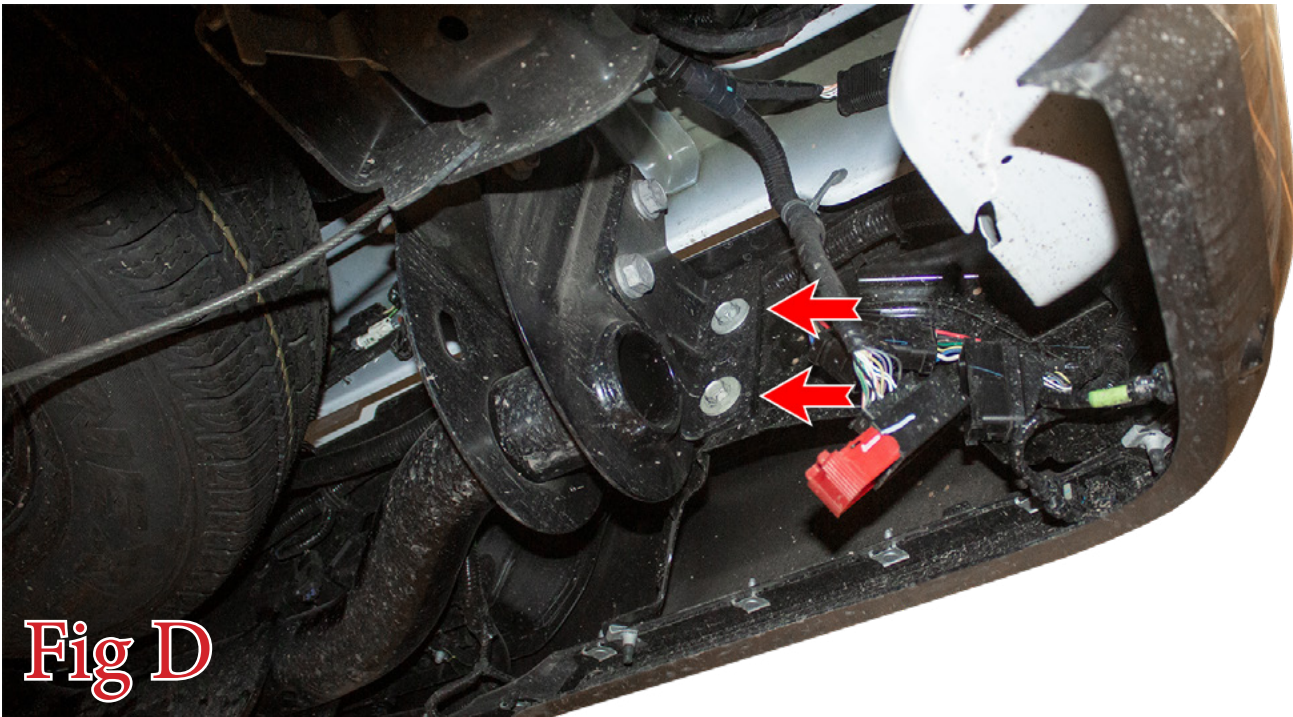
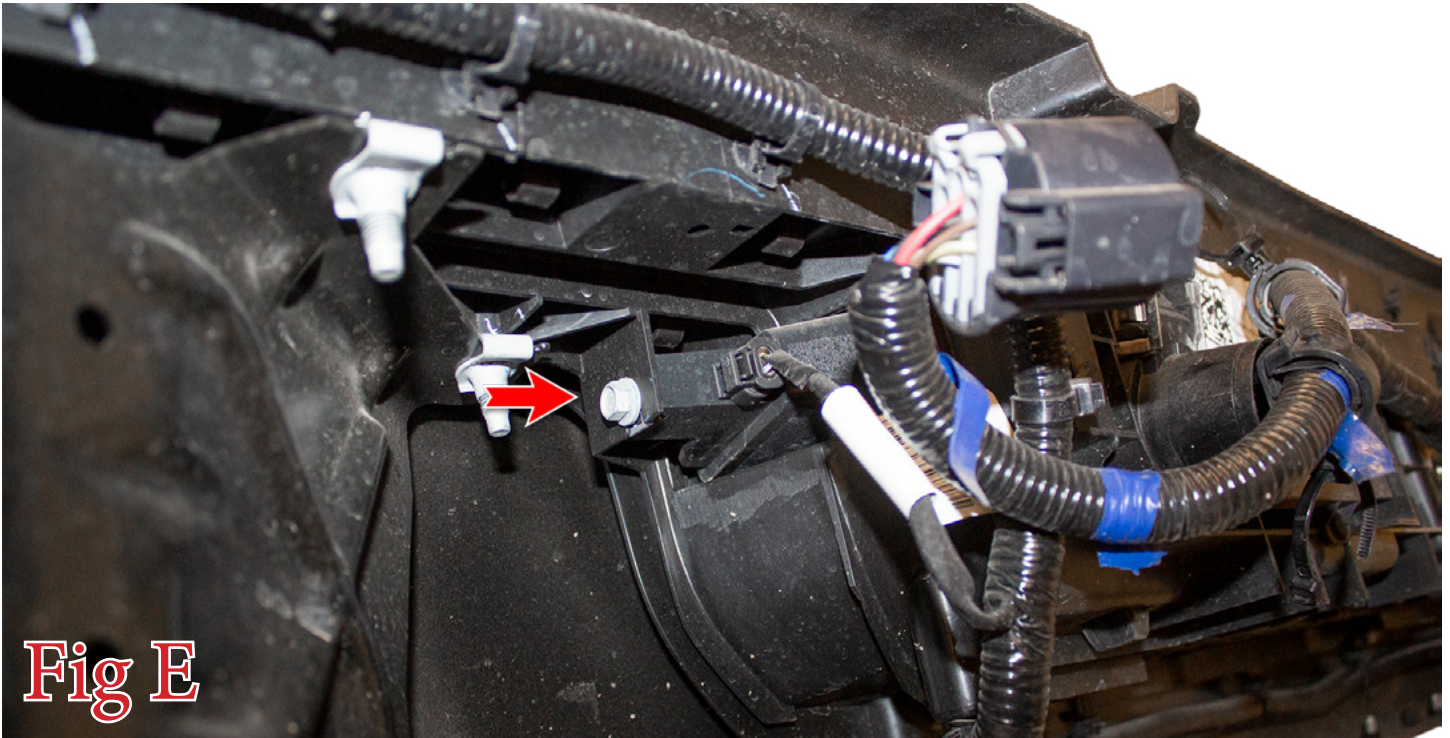
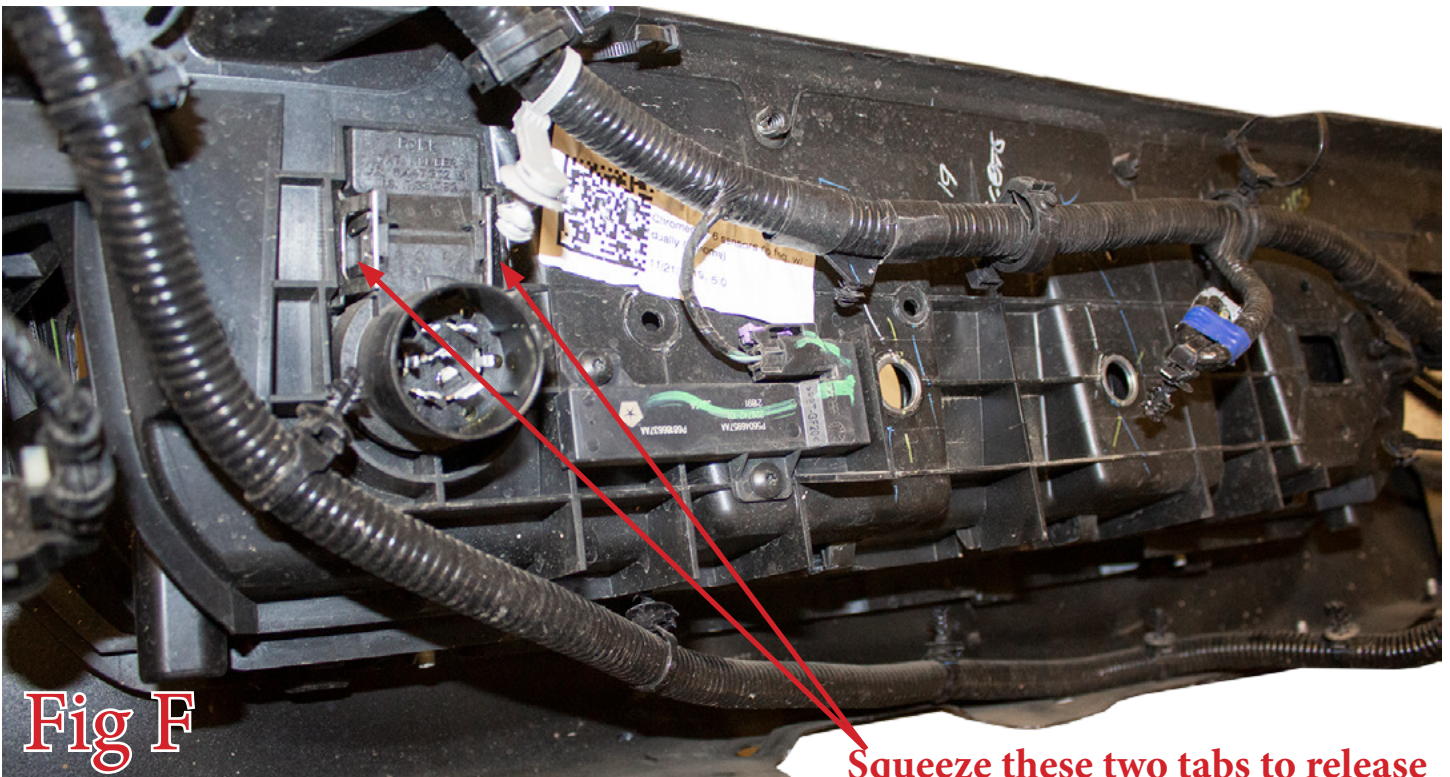


Fig D

5. Use a 10mm Socket to remove the mounting bolt for each license plate light. Then, remove the license plate lights from the OEM bumper. **Save the bolts for reuse.** (Fig E)



6. Remove the trailer plug by squeezing the two tabs in on the back side of the plug and pushing it out the front of the bumper. (Fig F)



**Squeeze these two tabs to release the trailer plug.**

7. Remove the two plastic clips holding this module onto the OEM Bumper. Leave the module plugged in/connected to the harness. (Fig G)

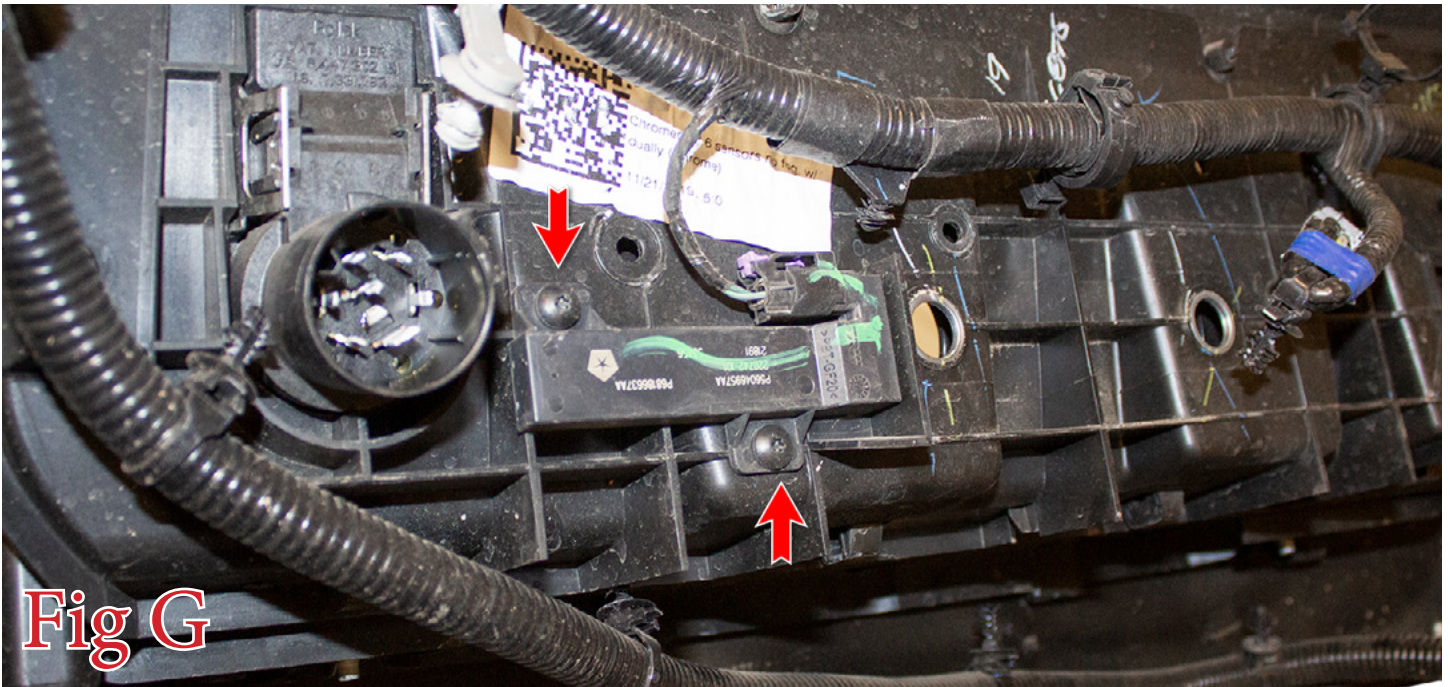


Fig G

8. Remove the parking sensors from their mounting rings. Do this by spreading the two tabs on the back side of the mounting rings and pushing the sensors out the back side of the rings. (Fig H) **Make sure to keep track of the position/orientation that these come off your OEM bumper so that you can reinstall them on your new bumper in the same position/orientation.**

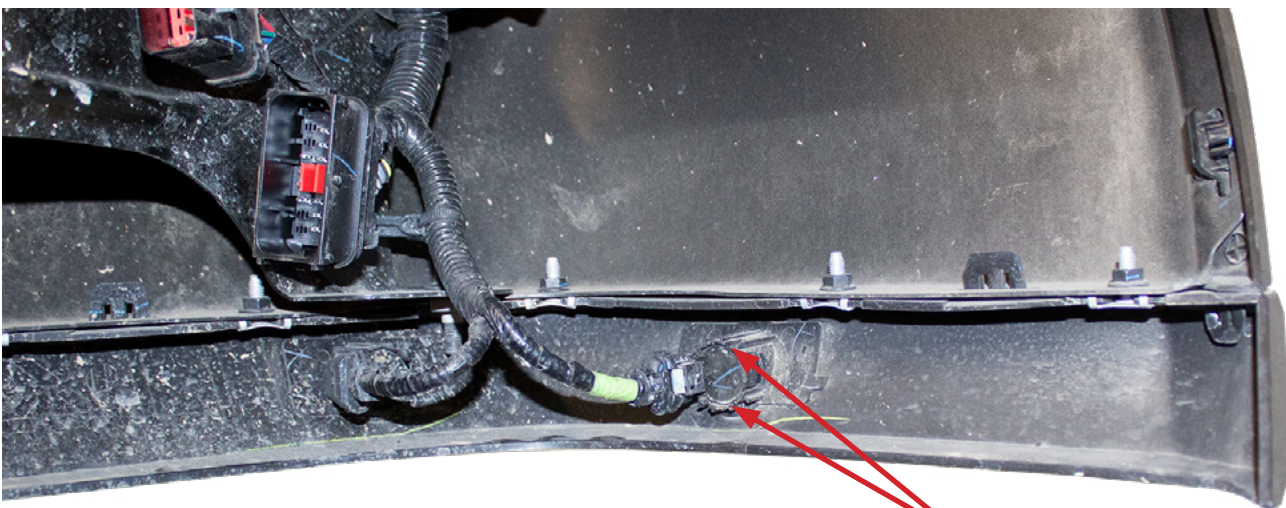
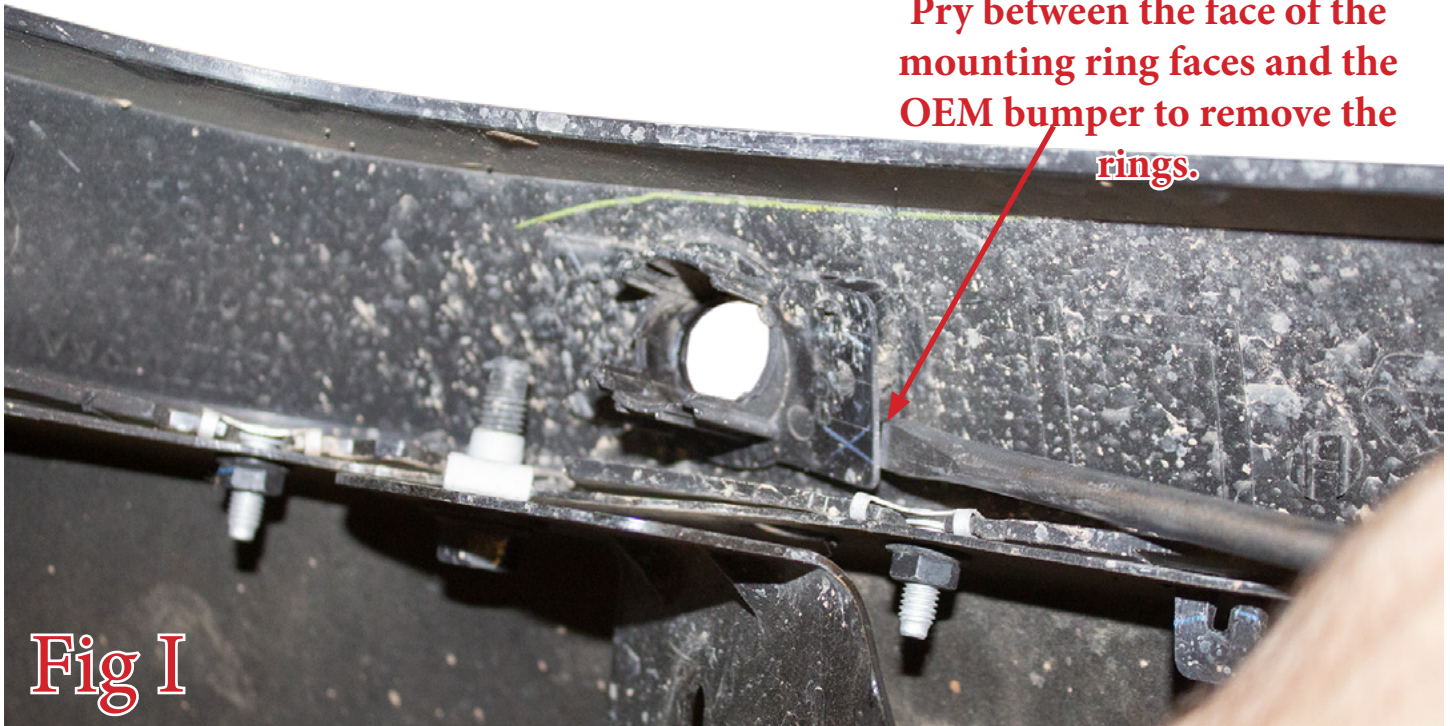


Fig H

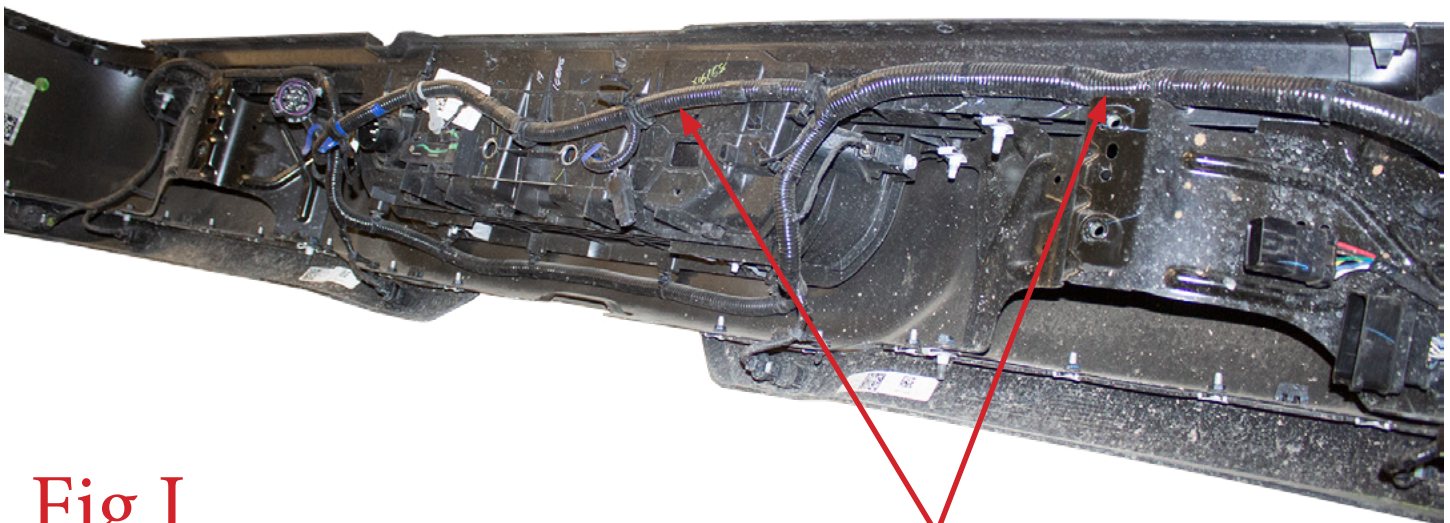
Spread these two tabs to release the sensor.

9. Remove the parking sensor mounting rings from the OEM bumper. These outer rings are plastic welded to the bumper. You will have to use a putty knife or flathead screwdriver between the face of the tabs on the back side of the ring and the bumper as shown in (Fig I). **Make sure to keep track of the position/orientation that these come off your OEM bumper so that you can reinstall them on your new bumper in the same position/orientation.**



**Pry between the face of the mounting ring faces and the OEM bumper to remove the rings.**

10. Remove the bumper harness from the OEM bumper. Do this by releasing the series of plastic clips that holds the harness to the bumper. (Fig J)

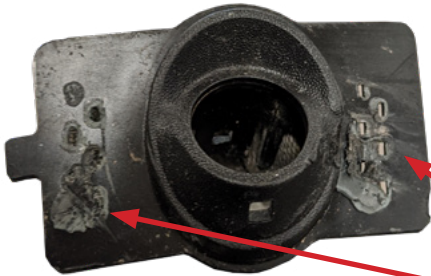


**Fig J**

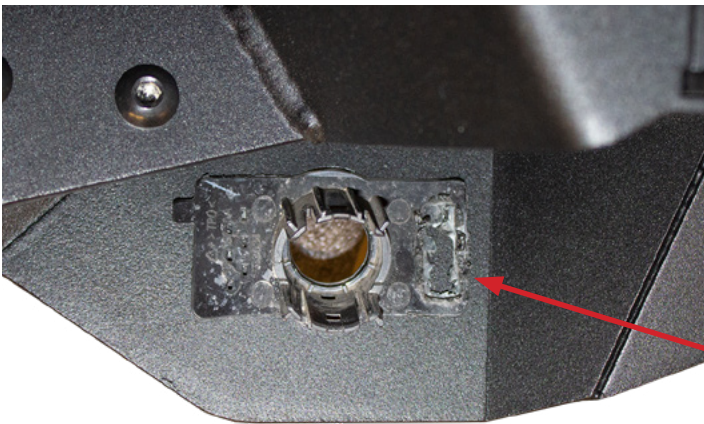
**Remove this harness from the OEM bumper.**

## Installation:

11. Install the parking sensor mounting rings onto your new bumper. Do so by applying epoxy (or something similar) to the front face of the sensor ring mounting plates, then letting them set in place on your new bumper until fully cured. (Fig K) **Install these in the same position/orientation as they came off your OEM bumper.**



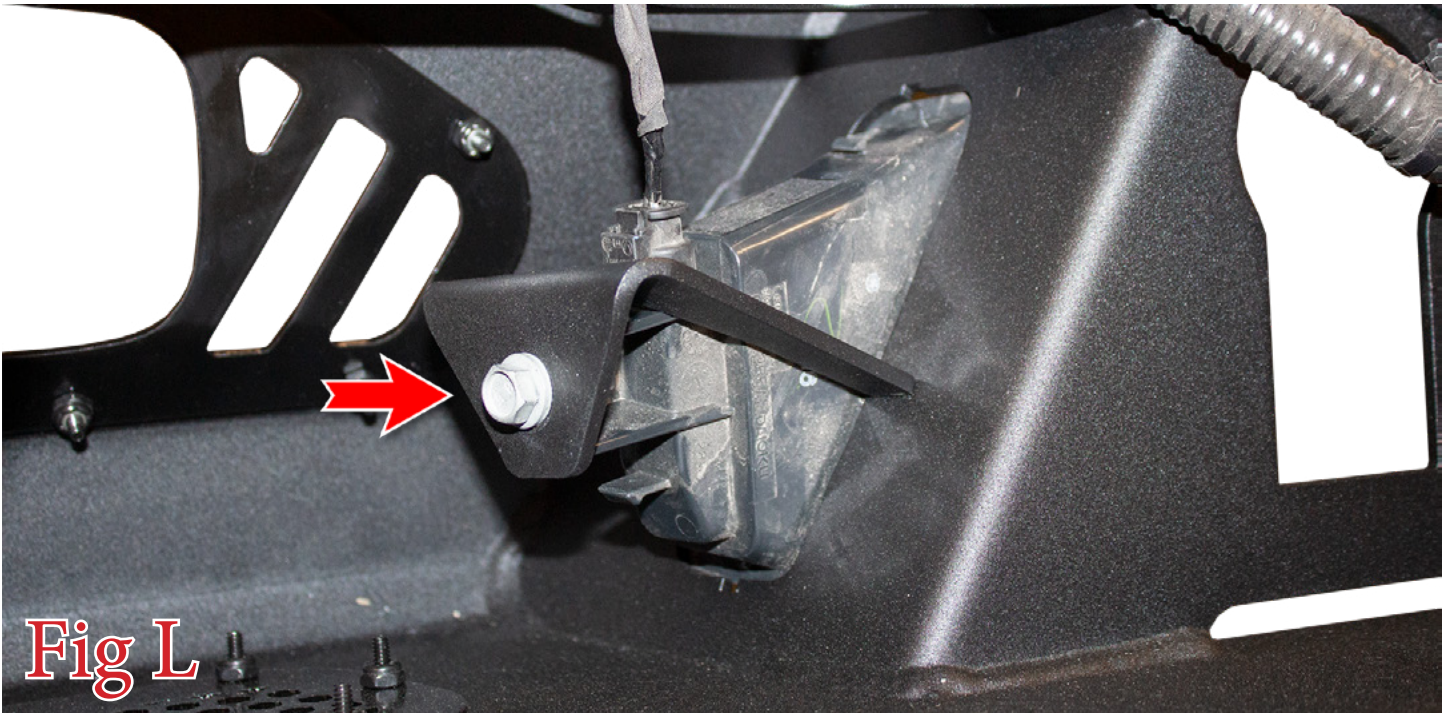
**Apply Epoxy Here.**



**Then, set the in place on the bumper until they fully cure.**

**Fig K**

12. Install the license plate lights onto your new bumper. Use the supplied license plate light mounting brackets as shown in (Fig L). Reuse the bolt from Step 5 to secure the light. Do not overtighten this bolt or the light housing could crack.



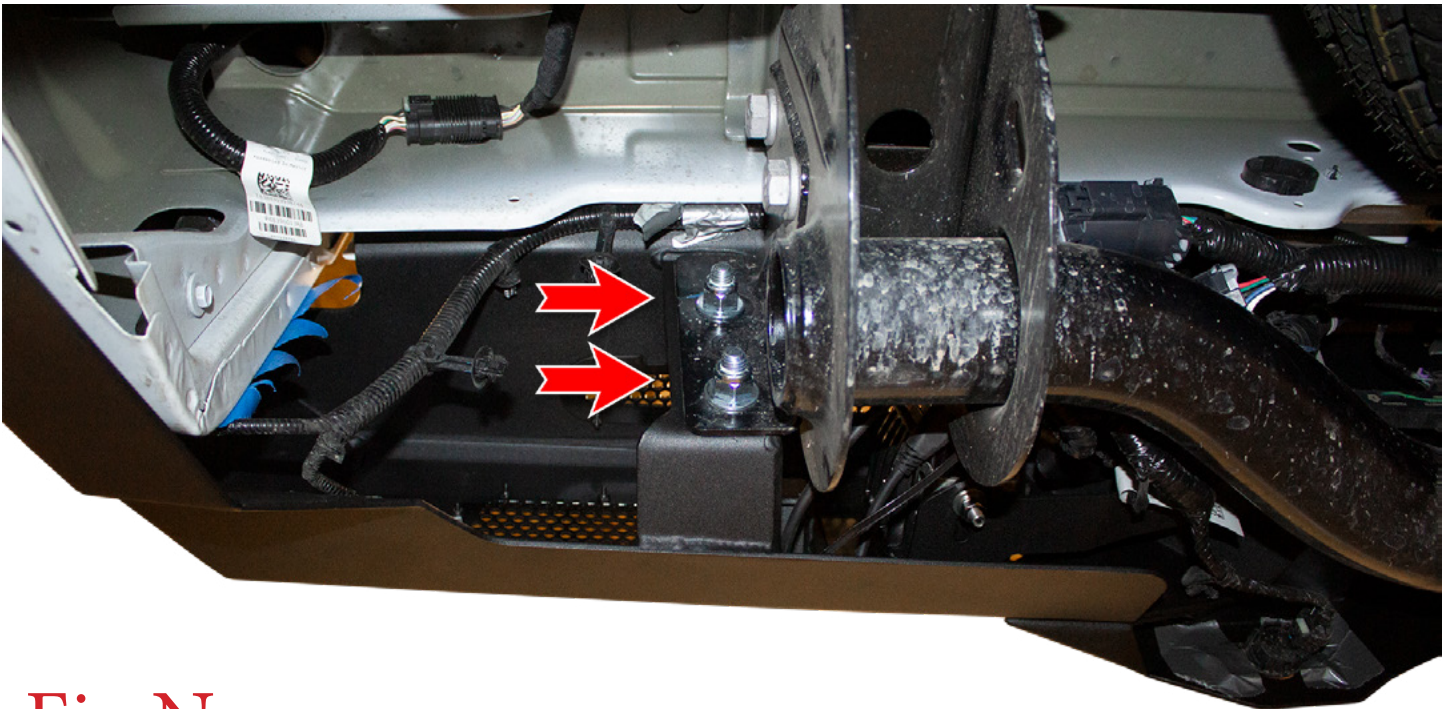
13. Install the trailer plug onto your new bumper. Do this by pressing it into its precut hole until it clicks into place. If it does not click into place, you may have to manually spread the two tabs on the back side of the trailer plug with a screwdriver or something similar. (Fig M)



Fig M



14. Install the parking sensors and the bumper harness onto your new bumper. Make sure to line the bumper harness connectors up on the same side as they came off the OEM bumper. Also, make sure to install the parking sensors in the same position/orientation as they came off the OEM bumper. Plug in your license plate lights. Make sure the harness is out of harm's way, so it won't get crushed by the bumper mounts when it is installed.
15. Install any lights you have for your bumper now. Follow the light manufacturer's guide for mounting/wiring information.
16. Set the bumper in place on the vehicle. Then, install the supplied 1/2" Bolts (x4), 1/2" Nuts (x8), and 1/2" Washers (x4). Leave these bolts loose for now. (Fig N)



**Fig N**

17. Align the bumper so it is centered left to right and straight in relation to the tailgate. Then, torque the mounting bolts to 70 foot pounds.
18. Plug in the connectors from Steps 1 & 2.
19. Stand back and enjoy your new ADD Bomber HD™ Rear Bumper.
20. Check and re-tighten, if needed, all mounting bolts after 100 miles and periodically thereafter.

2020-Current Ram 2500/3500 Bomber HD™  
Rear Bumper Installation Instructions

