



**Installation Instructions**  
**717910**  
**2017-21 NISSAN TITAN**  
**5.6L ENGINE**  
**2/4 Wheel Drive & All Wheelbases**  
 This kit does NOT fit XD models.

**OVERVIEW:**

1. Take a moment to read and understand these instructions before installing your Flowmaster performance system.

**NOTE:** Please inventory all parts now before continuing and if necessary, report any missing items to our tech line. This will avoid potentially stranding your vehicle until any missing replacement parts arrive.

ITM #	PART #	DESCRIPTION	QTY.
5	26752M	Tailpipe Assembly	1
6	ST509B	Tip	1
N/A	PK993	Hardware Package includes:	1
7	504HA	Muffler Hanger	1
8	MC300BS	3" Stainless Band Clamp	3
9	MC250BS	2½" Stainless Band Clamp	1
10	HA168	Red Rubber Hanger	1
11	HW502	¾" Hanger Keeper	2

ITM #	PART #	DESCRIPTION	QTY.
1	86578M	Left Inlet Pipe	1
2	86579M	Right Inlet Pipe	1
3	26751M	Extension Pipe	1
4	71249-Z	Muffler	1

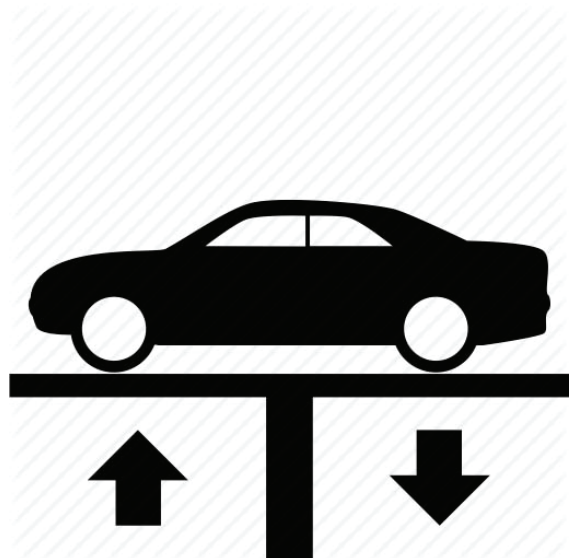
**REMOVE STOCK EXHAUST SYSTEM:**

2. Raise vehicle up on a hoist or rack to working height. If you don't have access to a hoist or rack, support vehicle with jack stands.

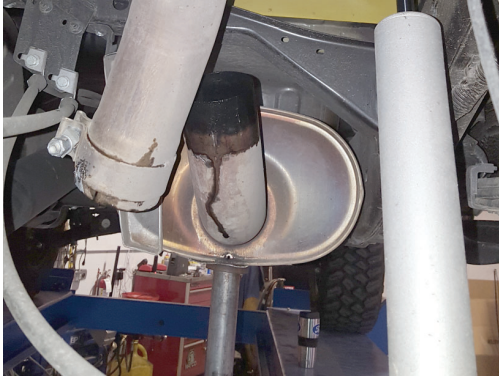
**WARNING:**  
 Avoid serious burns! Allow your vehicle time to cool completely before touching any factory engine components.

**To ease preparation and installation of your new kit:**

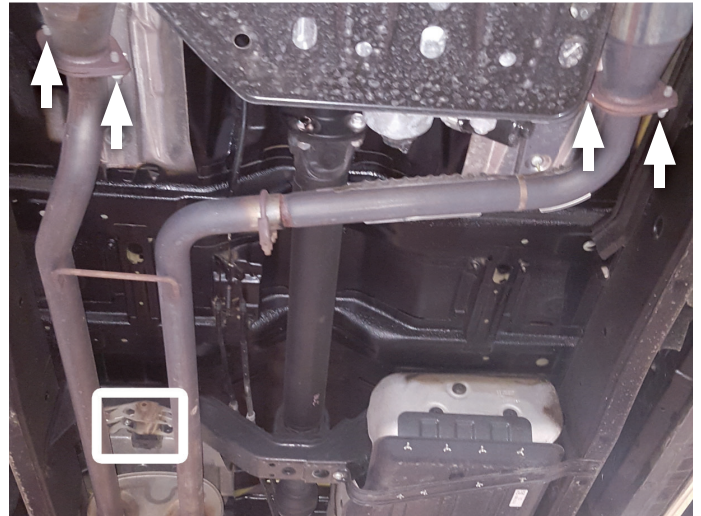
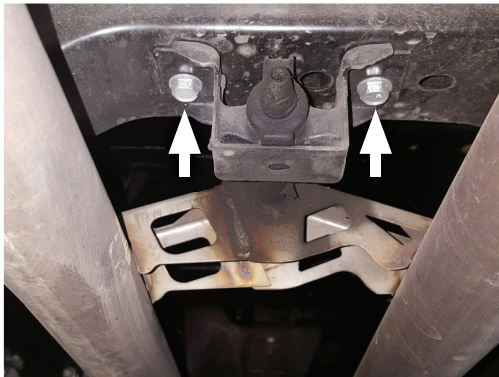
- Apply penetrating lubricant to mounts, bolts and clamps before you remove them.
- Use stands as necessary to support parts as you detach them from your vehicle and again as you install new parts.



3. Loosen clamp to remove tailpipe from muffler, remove wire hanger from isolater then disassemble tailpipe completely from vehicle.



4. Remove bolts and nuts (x4 ea.) from inlet pipe flanges. Then remove bolts (x2) and wire hanger mount to disassemble exhaust system from vehicle. Retain all bolts and nuts for later use.



## INSTALL FLOWMASTER EXHAUST SYSTEM

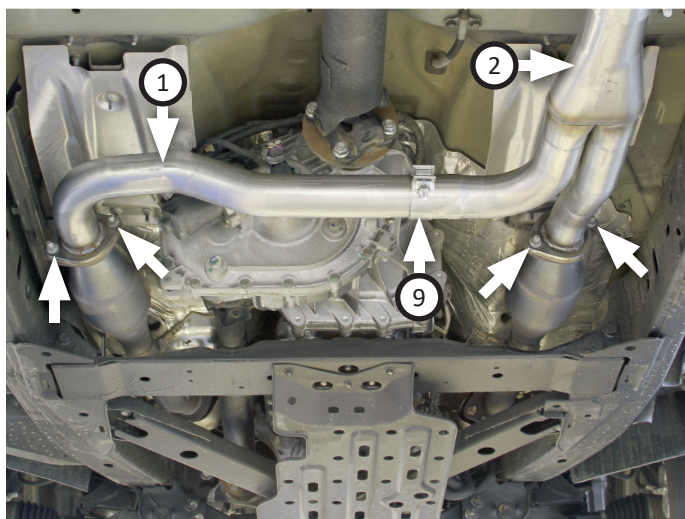
5. Remove nuts from stock and Flowmaster clamps, apply anti-seize compound to bolts and re-install nuts.

**NOTE:** The image in this step is intended for illustrative purposes only and may or may not accurately reflect components included in your kit.

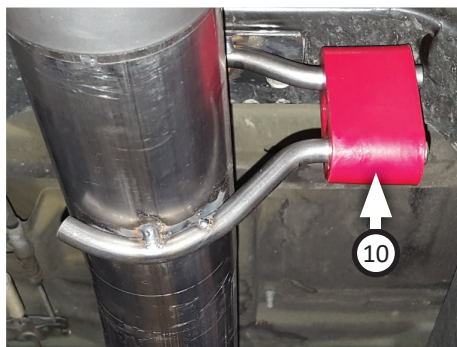




6. Fit **left (1)** and **right (2)** inlet pipes together and secure them using **clamp (9)**. Install assembly to catalytic converters with (x4 ea.) bolts and nuts (removed step 4).



7. Install **muffler hanger (7)** using bolts (x2) (removed step 4) then install **rubber hanger (10)**. Place **clamp (8)** onto **extension pipe (3)** and connect it to inlet. Insert wire hanger into rubber hanger. Tighten clamp enough to allow for adjustment.



8. Place (x2) **clamps (8)** onto both ends of **muffler (4)** then connect it to extension pipe. Tighten front clamp enough to allow for adjustment.





9. Route **tailpipe assembly (5)** over axle and connect it to muffler. Mount wire hangers (x2) into isolators then tighten clamp enough to allow for adjustment.



10. Install **tip (6)** onto tailpipe then tighten inlet to secure connection.
11. Adjust exhaust components for fit; maintaining ½" clearance and compensating for suspension, travel and vibration, then tighten all clamps. Finally, fit (x2) **hanger keepers (11)** onto each sideways hanger.
12. Recommended: Secure slip-fit connections with a 1-inch tack weld then spray high-temp paint over each weld to prevent rust and premature corrosion.



Congratulations, the installation of your FLOWMASTER performance exhaust system is now complete!





Installation Diagram  
**717910**  
**2017-21 NISSAN TITAN**  
**5.6L ENGINE**  
2/4 Wheel Drive & All Wheelbases  
This kit does NOT fit XD models.

