

RAZORBACK HARDTOP

2018+ JEEP WRANGLER JL
HTJL02-B



TOOLS REQUIRED

- 10mm, 7/16" Wrench
- 7/16" Socket
- 6mm Allen Bit
- Philips Head Screwdriver
- T40 Torx Bit

SKILL LEVEL

- Novice/Intermediate
- 2 persons

Little skill level required. You may be able to install it by yourself, however, additional help is highly recommended.

TIME REQUIRED

- 2.5 Hours

Time to install this should only take about two and a half hours.

WARNINGS/CAUTIONS BEFORE STARTING INSTALLATION

Before you install this kit – Read and understand all instructions, warnings, cautions, and notes contained in this installation instruction guide. Consult your vehicle owner's manual for proper disconnection of electrical and lifting of vehicle if required for installation of this product.

This install may require some technical skills and knowledge of basic mechanical work. If you do not feel that you are capable of performing this install please take this product to a trained professional.

After reading this guide please contact us with any questions or concerns before installing product.
Customer Service: 855-680-9595

DV8 Offroad is not responsible for any bodily injury or harm to you or your vehicle as a result of an improper install.

Proper installation of this kit required knowledge of the factory recommended procedures for removal and installation of original equipment components. We recommend that the factory shop manual and any special tools needed to service your vehicle be on hand during the installation. Installation of this kit without proper knowledge of the factory recommended procedures may affect the performance of these components and the safety of the vehicle

- Always wear eye protection when operating power tools

Inspect all contents of this package to make sure product is not damaged and all installation hardware has been included. If parts are missing from kit, please be prepared to provide the following information

1. Name of purchase location
2. Bar Code on side of box
3. Date above bar code
4. Date inside box cover



INSTALLATION MANUAL

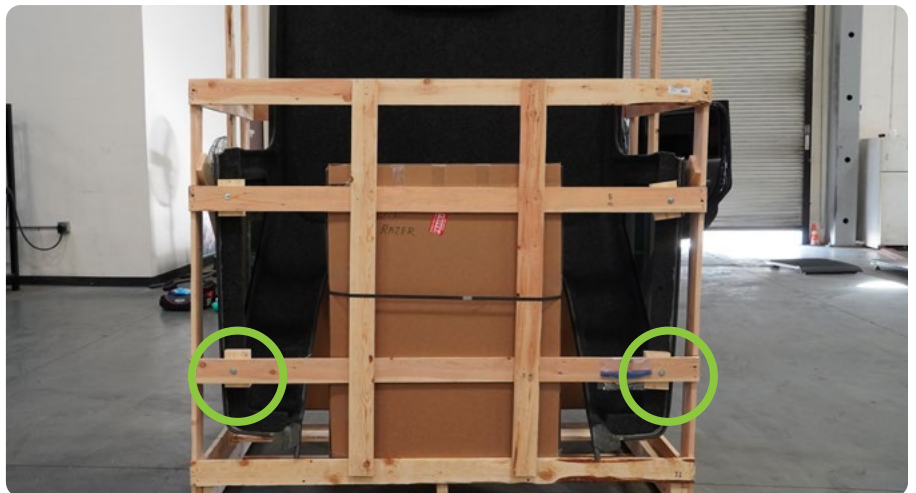
Begin by unpacking all items and inspecting for missing pieces or damage. If you have any concerns, please contact the company the product was purchased from. Extra hardware may be included with the product.

HARDWARE INCLUDED

- (6) M6x20 Allen
- (6) M6 Serrated Nuts
- (4) Foam Door Seals
- (4) D-Shaped Seals

STEP 1 | For removal from packaging and installation of the DVB top, we highly recommend assistance from a friend to prevent injury, and damage to the product or vehicle.

Begin by removing the bottom two bolts securing the hardtop to the wood frame.



INSTALLATION MANUAL

STEP 2 | When removing the upper bolts securing the hardtop to wood frame, it is important that the hardtop be resting on the wood so that it does not fall and get damaged.

To achieve this, lean the wood frame forward as far as possible, while still being able to un-fasten the bolts securing the hardtop.

We recommend the helper to help hold the hardtop in place when removing these bolts.

The closer you can get to the ground, the more stable the hardtop will be, and less likely it is to fall and become damaged.

Use a 7/16" wrench and socket.



STEP 3 | Once the bolts are removed, set the wood frame/hardtop on the ground and gently lean the hardtop forward so it is resting on an angle.



INSTALLATION MANUAL

STEP 4 | With the help of a friend slowly lift and move the hardtop forward so that the corner is resting on the ground in front of the wood frame.



STEP 5 | Carefully and slowly lift the wood frame and slide it over the peak of the hardtop.

Carefully unpack the targa and back window glass.

Then set the wood frame off to the side. Please keep the crate and all packing materials until you are satisfied completely with the fitment. If a return is necessary, the crate and packing material will be need to return the product.



STEP 6 | Install glass window using the provided hardware with a philips head screwdriver and 10mm wrench.

Then, install the glass window shocks by pressing them into place. They should “snap” in.



INSTALLATION MANUAL

STEP 7 | Close the tailgate to prepare to place the hardtop on the vehicle.

Removal of spare tire will make installation easier, but is not necessary. Ensure the rear window glass is in the "open" position prior to installation.

Once the hardtop is in place, open the tailgate.

Leave the tail gate open and do not cut the seals.

With the help of a friend lift the hardtop and place it on the vehicle in its approximate location of install.

Adjust the forward/back positioning of the hardtop using the rear passenger door seals as a guide.

When positioned correctly:

- The seal will not be crushed
- There will be no gap between the hardtop and the seal
- The seal will be seated firmly between the hardtop and door

Then loosely secure the hardtop with the factory hardware.

- There are six fasteners for the interior located along each edge of the tub.
- There are two fasteners above the rollbar towards the front of the vehicle.

There is a short test you can perform to check tightness/fitment of the door seals against the hardtop with any dollar bill.

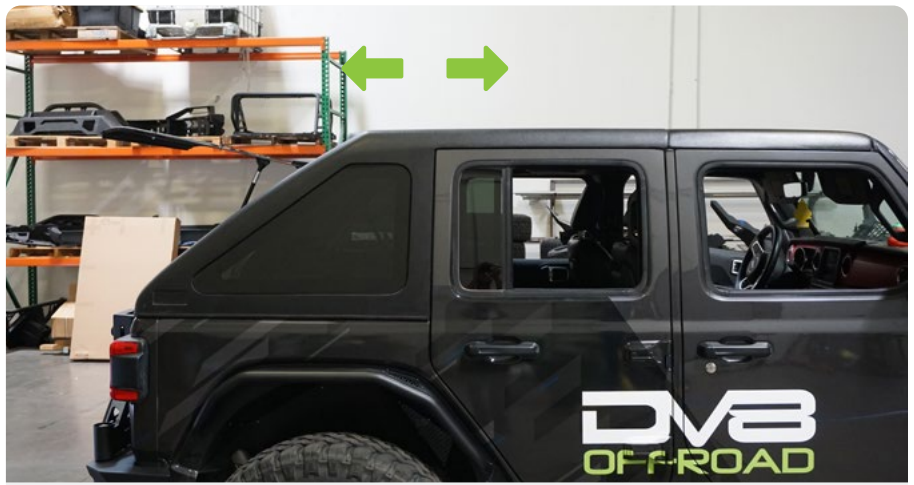
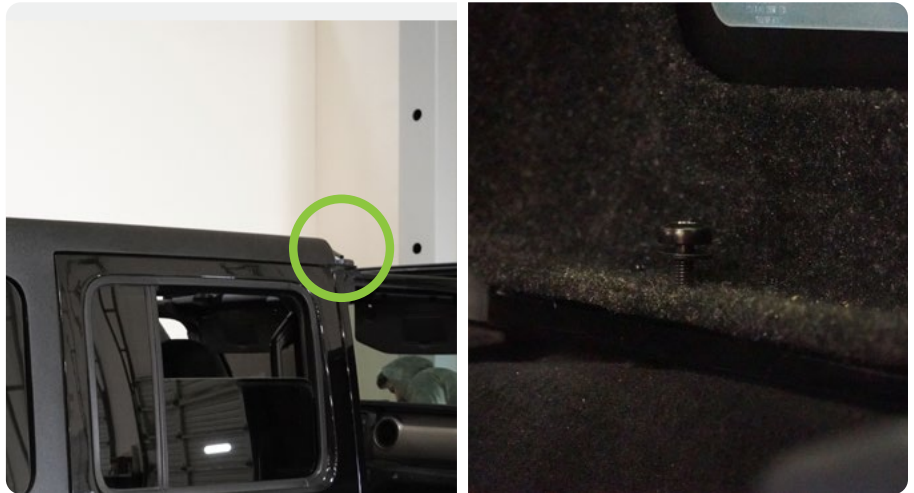
Open the door and lay the dollar bill flat against the hardtop where the door will close.

Then close the door so that the dollar is sandwiched between the door/door seal and the hardtop.

If you can pull the dollar out with no resistance, its likely your top needs to be adjust forward to create a better seal.

If your dollar will not move, or can be removed with slight resistance from the seal, then you have created a good seal.

Perform this test in multiple areas to determine if the seal and fitment is good.



INSTALLATION **MANUAL**

STEP 8 | On the rear of the vehicle, fold the seals so that they are behind the tailgate when closed.

These guide water away from the vehicle to prevent leaking.

DO NOT CUT OR TRIM THESE.



INSTALLATION MANUAL

STEP 9 | Secure the hardtop to the roll bar using the factory hardware. Leave all other hardware loose until final fitment is finished.



STEP 10 | Place the targa on the vehicle for the first fitment. The front of the targa should be almost touching the two fins on the windshield seal.



INSTALLATION MANUAL

STEP 11 | Turn the rear-corner latches and tighten them down using a 6mm allen bit.

These latches may need to be loosened slightly during initial installation.



STEP 12 | While pulling down on the targa from the outside with one hand, use the other hand to clasp the latch into place.

Pulling down the targa during initial installation will help the latch reach its clasp.



INSTALLATION MANUAL

STEP 13 | Turn the front-center latches into place and tighten them down using a 6mm allen bit.

These latches may need to be loosened slightly during initial installation.



STEP 14 | Turn the rear-center latches and tighten them down using a 6mm allen bit.

These latches may need to be loosened slightly during initial installation.



STEP 15 | Check that the targa has not shifted away from the windshield, and that the seals are not being pulled away from the windshield. See pictured example of shifted targa and pulled seal. If the targa has not shifted, proceed to step 17.

Prior to any adjustment, now is a good time to look at the fitment between the hardtop and the targa(see next step).

If the targa has shifted, loosen and undo all latches, then repeat steps 11-15.

If the targa continues to shift, the hardtop may require adjustment, proceed to step 17.



INSTALLATION MANUAL

STEP 16 | Check the seal between the hardtop and the targa.

The seal should be snug, but not crushed, and there should be no visible gaps.

If the seal is crushed, but the targa shifted away from the windshield, the hardtop likely does not need adjustment, and the targa needs to be re-fitted. Repeat steps 11-16.

If the seal is crushed, but the targa fits well on the windshield seal, the hardtop may need to be adjusted backwards, towards the rear of the vehicle. Loosen hardtop hardware, adjust, then repeat steps 11-16.

If there is a gap, then the hardtop needs to be adjusted forward.

Loosen the factory hardware, adjust, then repeat steps 11-16.

Do not worry at this time if the targa and hardtop are not sitting level. There is some slight adjustment here which will be completed in a later step. Additionally, it will be necessary to allow the hardtop and targa to “set” over 2-3 weeks to allow the seals to settle into position (this is common with new seals).

Crushed Seal



Too Large of a Gap



Good Fitment



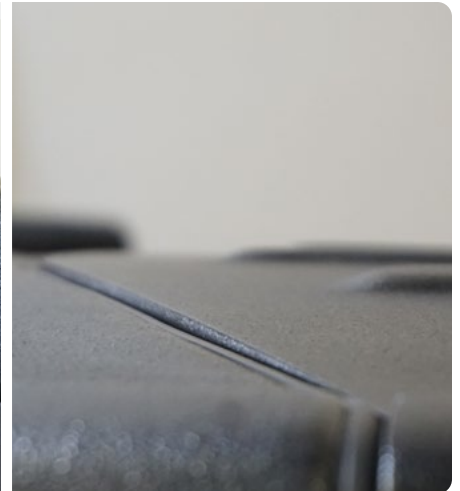
INSTALLATION MANUAL

STEP 17 | Once the fitment of the targa and hardtop is good, double check to ensure all latches and hardtop hardware are tight. Use a 6mm allen bit and a T40 torx bit.



STEP 18 | If the edges of the targa are sitting higher than the hardtop, tighten down the rear-corner latches until they are sitting flush with each other.

If the center of the targa is sitting higher than the hardtop after tightening the rear-corner latches, then tighten the rear-center latches until it sits flush.



INSTALLATION MANUAL

STEP 19 | Double check fitment around the windshield and between the hardtop and targa.

Double check fitment of the hardtop against the rear doors.



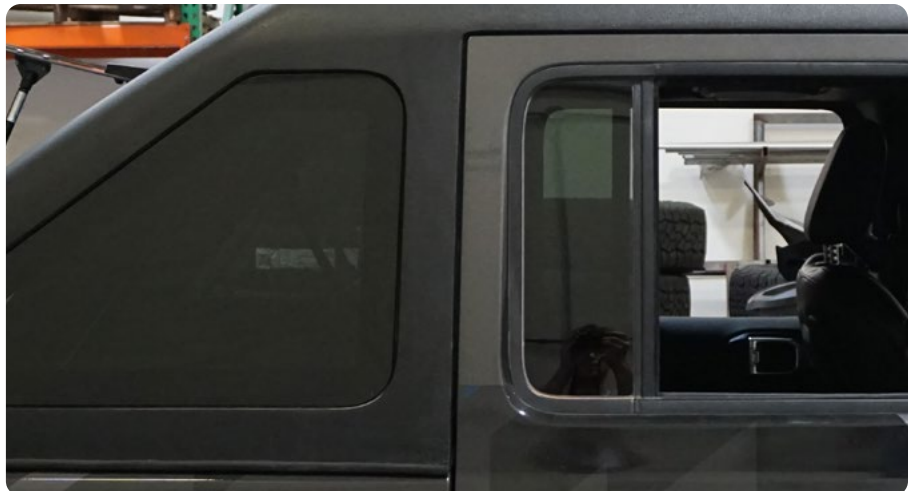
STEP 20 | -A good fitting hard top will have no gaps in the seal between hardtop and rear door referenced in step 8.

-The targa will be sitting level with the hard top allowing a smooth transition from hard top to targa to windshield.

-The front of the targa will be touching, or nearly touching the fins on the windshield seal. The windshield seal will not be stressed or pulled away from the windshield.

-There will be no gaps between targa and windshield seal, targa should be putting slight pressure on the seal all the way across the windshield.

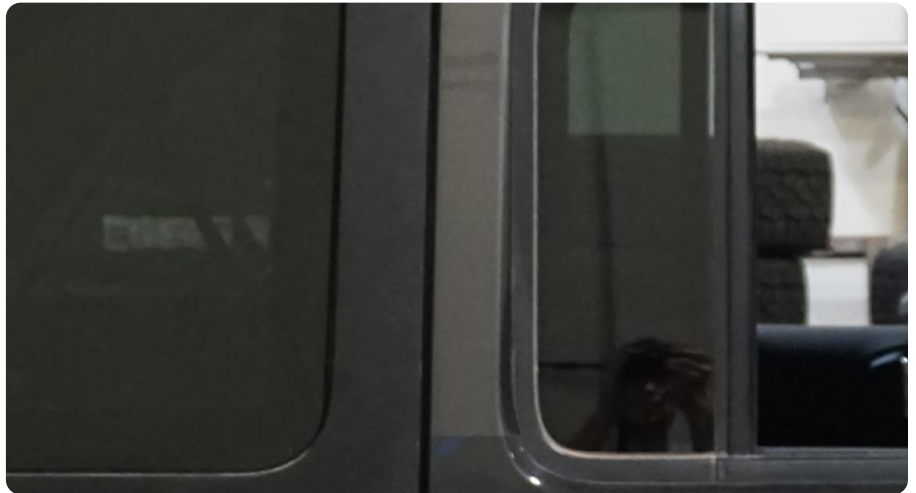
-The seal between the targa and hardtop will not have gaps, and will not be crushed.



INSTALLATION MANUAL

STEP 21 | It is recommended to let the hardtop and targa sit on the vehicle for 2-3 weeks with out removal to allow the seals to settle before checking for water leaks.

It is possible that the hardtop may leak slightly upon installation, but these leaks dissipate after the seals have had a chance to settle into place



STEP 22 | If after this allotted time, the hardtop still has minor leaks, we include some seals and foam padding to install in certain areas where leaking is the most probable.

You can also perform the dollar trick referenced in step "8" to determine if adding these seals is necessary.



STEP 23 | If leaking persists after these steps have been completed, please email sales@dv8offroad.com. Please include pictures of the hard top from all four corners, proof of purchase and a brief description of the issues that you are running into so we maybe able to assist.



INSTALLATION MANUAL

STEP 24 | Congrats! You are finished with the install the 2018+ Jeep JL DV8 Razorback Hardtop.

